

# **SR4069E升降工作平台 零部件图册**

**SR4069E AERIAL WORK PLATFORM PARTS CATALOG**

**临 工 集 团 济 南 重 机 有 限 公 司**

**LINGONG GROUP JINAN HEAVY MACHINERY CO., LTD.**

## **配件与服务Spare parts and services**

对于临工集团济南重机的机器所有者来说，只有临工集团济南重机配件和服务才能够使您的机器更好地保持原有的特性。

For the owner of the machines of LGMG,only the spare parts and services of LGMG can make your machine to better maintain the original features.

只有临工集团济南重机才能够为您提供完美匹配且优质纯正的配件和对您的机器了如指掌的专业维修人员。这样才能保证及其可持续的高产能和更长的使用寿命。

Only LGMG is able to provide you with the perfect match of pure quality spare parts for your machine and knowledge of professional maintenance staff.Only in this way it can ensure sustainable high productivity and longer service life.

## **SR4069E升降工作平台零部件图册 SR4069E AERIAL WORK PLATFORM PARTS CATALOG**

2020年01月 第1版 第1次印刷

2020-1 Version 1 Printed 1

**临 工 集 团 济 南 重 机 有 限 公 司**  
**LINGONG GROUP JINAN HEAVY MACHINERY CO.,LTD.**

地址：中国·山东省济南市高新区科嘉路2676号

Add : 2676 Kejia Road, high tech Zone, Jinan City, Shandong Province

电话：86-0531-67601108

Tel : 86-0531-67601108

传真：86-0531-67601108

Fax : 86-0531-67601108

技术服务：86-0531-67605016

Web : WWW.LGMG.COM.CN

# 前 言

SR4069E升降工作平台零部件图册，是为了方便用户使用、维修和保养而绘制的，以供在使用过程中查阅及参考，也可帮助用户了解本机的结构和装配关系。发动机的零部件详见其随机资料，图册不再绘出。

本图册按系统划分绘制出了各零部件的图形及相互装配关系。凡装机后不可拆卸的部件（如焊接件、铆合件），只标出部件代号，不另列其组成零件。本图册明细表采用中英文对照编排。

本图册根据SR4069E标准配置编绘，其它非标准配置，可参照执行，详情请咨询临工集团济南重机有限公司、或当地经销商、或登录临工集团济南重机有限公司网站查询。随着科技的进步，产品将会不断改进，故本图册的内容可能会有部分与以后的产品不一致，恕不另行通知。敬请用户在订购配件时，指明所购整车的出厂日期和编号。

编者

2020年1月

# FOREWORD

This parts catalog of SR4069E aerial work platform is made for the convenience of users to use, repair and maintain the machine, which can be referred in the process of using. It can also help the users to be familiar with the structure and assembly relation of the machine. Parts of the engine are showed in details in its structure handbook, which are no longer contained in the catalog.

The catalog identifies drawings and assembly relations of different parts according to the system. Components which can not be taken apart, such as welding parts or riveted assemblies, are marked only by their code without the list of their consisting parts. The list in the catalog is arranged in Chinese and English.

This catalog is based on the SR4069E standard product, which can be a reference for the other nonstandard products, for more information, please consult LGMG, the local dealer or LinGong website. With the advancement of technology, we will keep on improving the product, so some content in the catalog may be inconsistent with the future products, which will not notice the users. When ordering the spare parts, please be kindly inform us the manufacturing date and serial number of the machine.

THE COMPILER

2020.1



## 目录 CONTENTS

### B. 驱动桥系统 Axle system

B0400-2504000283.S1C 前桥总成

Front axle assembly ..... 8

B0500-2505000119.S1A 后桥总成

Rear axle assembly ..... 10

### D. 底盘系统 Chassis system

D0700-2516002132.S1A 底盘总成

Chassis assembly ..... 14

D0800-2518001452.S1A 电池油箱侧

Battery and oil box side ..... 16

D0802-2518001450.S1A 油箱侧装配

Oil box side ..... 18

D0801-2518001449.S1A 电池侧装配

Battery side ..... 20

D0800-2518000736.S 铰链

Hinge ..... 24

D2800-2528000247.S 配重总成

Balance weight ..... 26

### G. 叉架总成 Scissor assy installation assembly

G1300-2520003080.S 叉架总成

Scissor assy installation ..... 30

G1300-2520003081.S 第一内臂总成

Inner arm .....	34
G1300-2520003083.S 第二内臂总成	
Inner arm .....	36
G1300-2520003085.S 第三内臂总成	
Inner arm .....	38
G1300-2520003087.S 第四内臂总成	
Inner arm .....	40
G1300-2520003089.S 第五内臂总成	
Inner arm .....	42
G1300-2520003076.S 左走线板装配	
Plate .....	44
G1300-2520000754.S 滑块装配	
Link slider assembly .....	46
G1300-2520003074.S 右走线板装配	
Plate .....	48

## **I. 覆盖件附件 Cover accessory**

I1700-2529000222.S1A 覆盖件附件	
Cover .....	52

## **K. 平台总成 Platform assembly**

K2100-2521004940.S 平台总成	
Platform .....	56
K2101-2521001268.S1D 主平台	

Main platform .....	58
K2102-2521001269.S1C 延伸平台	
Extension platform .....	62
K2107-2521004219.S 插头固定装配	
Pcu installation assembly .....	66

## L. 液压系统 Hydraulic system

L2200-2510000314.S 液压油箱总成	
Hydraulic oil tank .....	70
L2200-2510000297.S 液压油箱配送总成	
Hydraulic oil tank assembly .....	72
L2300-2507000383.S1E 行走液压总成	
Drive hydraulic assembly .....	74
L2300-4120001488 齿轮泵A101098620	
Pump .....	78
L2300-4120703335 剪叉平台控制阀ST4830-AC00	
Valve manifold .....	80
L2300-4120001128 过滤器SP-06×10	
Filter .....	82
L2300-4120706354 转向油缸50*25*244-530	
Cylinder .....	84
L2300-4120706354001 油缸密封件包24A300301S	
Cylinder seal kit .....	86

L0700-4110002071 减速机总成7HB001F0B30057	
Wheel drive .....	88
L2400-2508000595.S 举升液压总成	
Lifting hydraulic system .....	94
L2400-4120704494 举升油缸	
Cylinder .....	98
L2400-4120704496 举升油缸	
Cylinder .....	100
L2400-4120705691 上部油缸阀块ST5243-AC00	
Valve .....	102
L2400-4120705692 下部油缸阀块ST5242-AC00	
Valve .....	104
L2600-2511000012.S1A 车桥摆动液压总成	
Oscillate system .....	106
L2600-4120002494 浮动油缸	
Cylinder .....	108
L1100-4120002534 浮动平衡阀ST8107-A000	
Valve .....	110
<b>M. 电气系统 Electric system</b>	
M2900-2530000934.S 控制电气总成	
Controller assembly .....	114
M2900-4130702319 平台控制器YOSEMITE-PCU-V8	



---

Platform controller .....	116
M3100-2532001531.S1B 底盘电气	
Chassis electric system .....	118
M3100-4130701479 交流行走电机ACX-3398_O_REV_B	
Ac motor acx-3398_o_rev_b .....	122
M3100-2532001529.S1B 蓄电池侧电气系统	
Electricity assembly .....	124
M3100-2532001528.S1B 油箱侧电气系统	
Electrical assembly .....	128
M3100-4130701752 下控箱总成	
Ground control box assembly .....	132

---



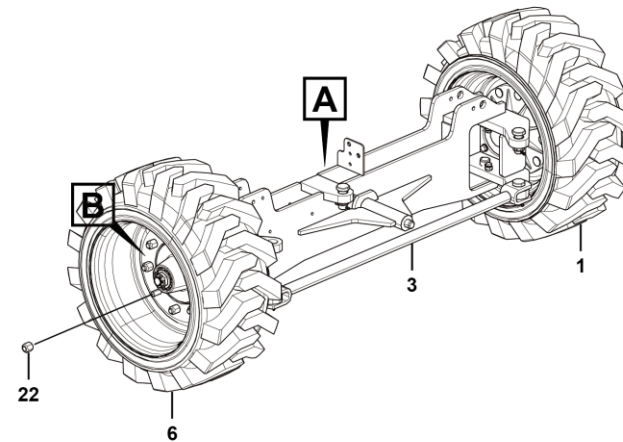
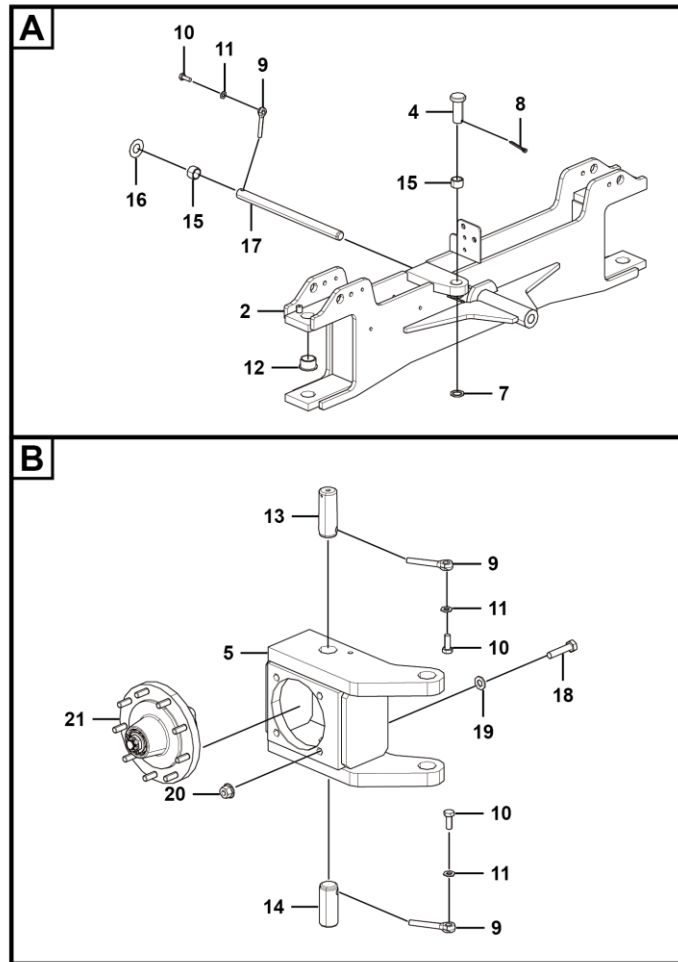
# **B 驱动桥系统**

## **AXLE SYSTEM**

**临 工 集 团 济 南 重 机 有 限 公 司**

**LINGONG GROUP JINAN HEAVY MACHINERY CO., LTD.**

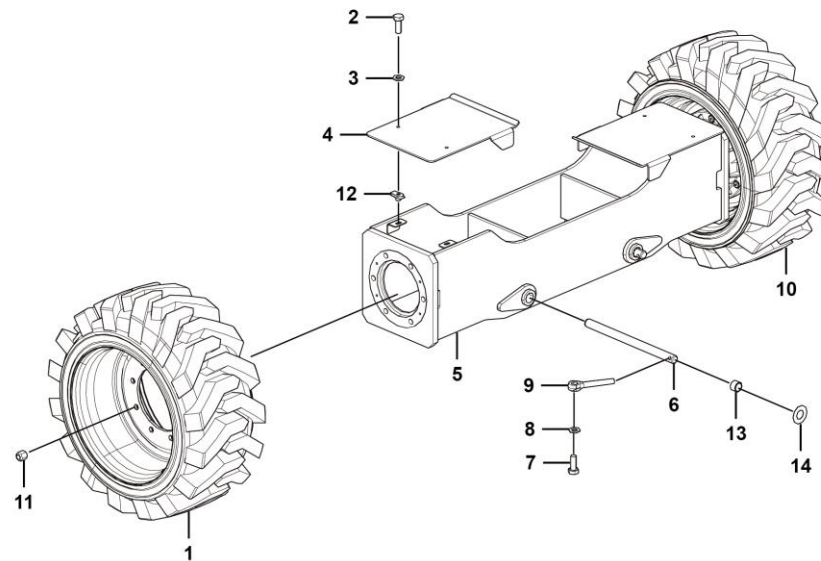
前桥总成    **Front axle assembly**



**B0400-2504000283.S1c**

序号 Key	零件代号 Part No.	名称 Description	是否配件 Spare parts Y/N	数量 Qty	备注 Remarks
1	4110702707	轮胎26×12-16.5GNM	Tyre	Y	1
2	25040001462	前桥焊接	Assembly	Y	1
3	25040001531	转向杆	Pole	Y	1
4	25040000311	拉杆销轴	Pin	Y	4
5	25040002841	转向节	Spindle assembly	Y	2
6	4110702705	轮胎26×12-16.5GNM	Tyre	Y	1
7	25040000291	垫圈	Washer	Y	4
8	4016000127	开口销GB91-5*40EpZn-Q235A	Split pin	N	4
9	25200006221	插销	Pin	Y	5
10	4011000082	螺栓GB5783-M10*25EpZn-8.8	Bolt gb5783-m10*25epzn-8.8	Y	5
11	4015010279	垫圈GB97.1-10flZnyc-480	Washer gb97.1-10flznyc-480	Y	5
12	25040001521	轴套	Axis	Y	4
13	25040003691	电位计销轴	Axis	Y	1
14	25040001511	轴	Axis	Y	3
15	25040000691	油缸轴套	Pin	Y	6
16	25040001541	调整垫圈	Plate	Y	2
17	25040001491	轴	Axis	Y	1
18	4011010236	螺栓GB5782-M12*50EpZn-10.9	Bolt gb5782-m12*50epzn-10.9	Y	8
19	4015000168	垫圈GB97.1-12EpZn-300HV	Washer gb97.1-12epzn-300hv	Y	8
20	4013010322	螺母GB6187-M12EpZn-10	Nut gb6187-m12epzn-10	Y	8
21	25040001481	轮毂合件	Assembly	Y	2
22	25050000401	锥面六角螺母M16×1.5	Nut	Y	18

后桥总成 Rear axle assembly



B0500-2505000119.S1a

序号 Key	零件代号 Part No.	名称 Description	是否配件 Spare parts Y/N	数量 Qty	备注 Remarks
1	4110702705	轮胎26×12-16.5GNM	Tyre	Y	1
2	4011000106	螺栓GB5783-M8*25EpZn-8.8	Bolt gb5783-m8*25epzn-8.8	Y	4
3	4015000072	垫圈GB97.1-8EpZn-300HV	Washer gb97.1-8epzn-300hv	Y	4
4	25050001212	后桥盖板	Plate	Y	2
5	25050001204	后桥焊接	Bridge assembly	Y	1
6	25040001491	轴	Axis	Y	2
7	4011000082	螺栓GB5783-M10*25EpZn-8.8	Bolt gb5783-m10*25epzn-8.8	Y	2
8	4015000162	垫圈GB97.1-10EpZn-300HV	Washer gb97.1-10epzn-300hv	Y	2
9	25200006221	插销	Pin	Y	2
10	4110702707	轮胎26×12-16.5GNM	Tyre	Y	1
11	25050000661	锥面六角螺母5/8-18UNF	Nut	Y	18
12	4014010053	簧片螺母QC339-M8EpZn-8	Nut	Y	4
13	25040000691	油缸轴套	Pin	Y	4
14	25040001541	调整垫圈	Plate	Y	4





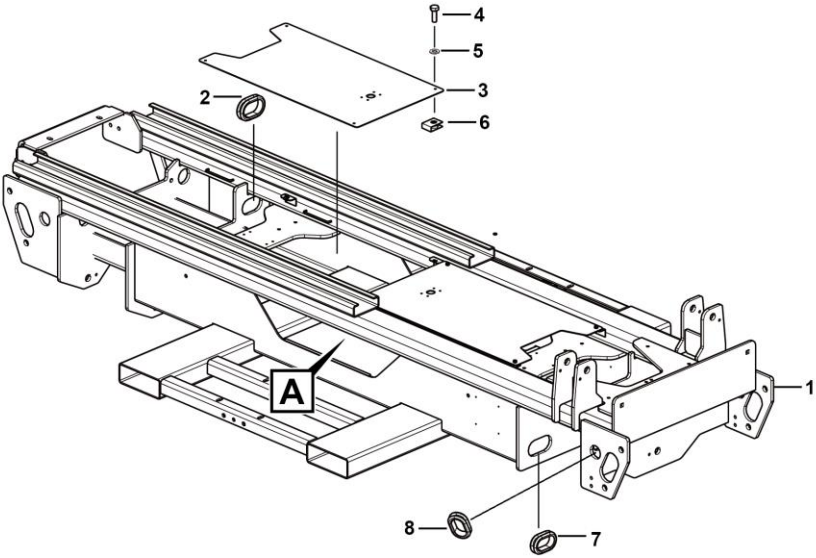
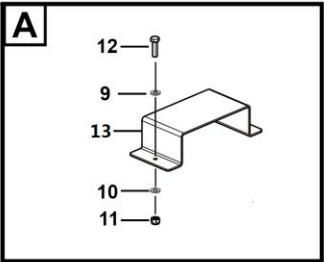
# **D 底盘系统**

## **CHASSIS SYSTEM**

**临 工 集 团 济 南 重 机 有 限 公 司**

**LINGONG GROUP JINAN HEAVY MACHINERY CO., LTD.**

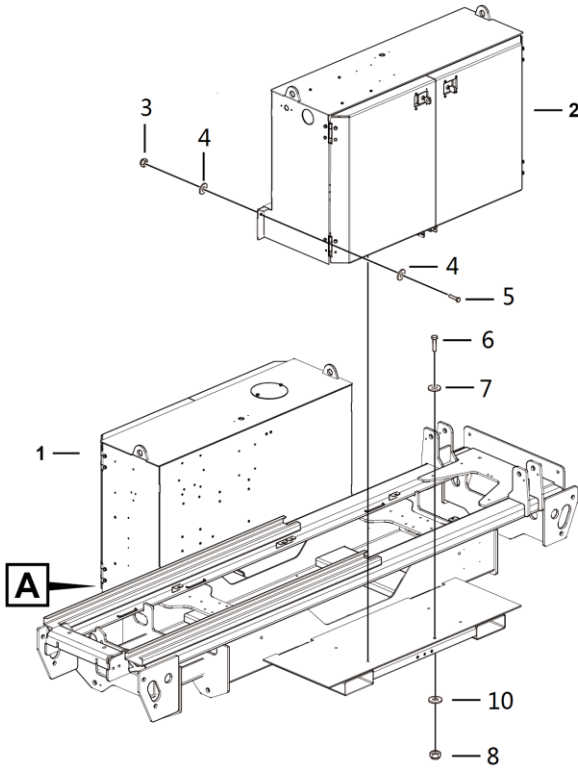
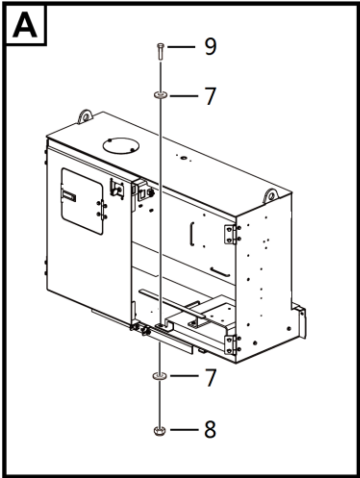
底盘总成 Chassis assembly



D0700-2516002132.S1a



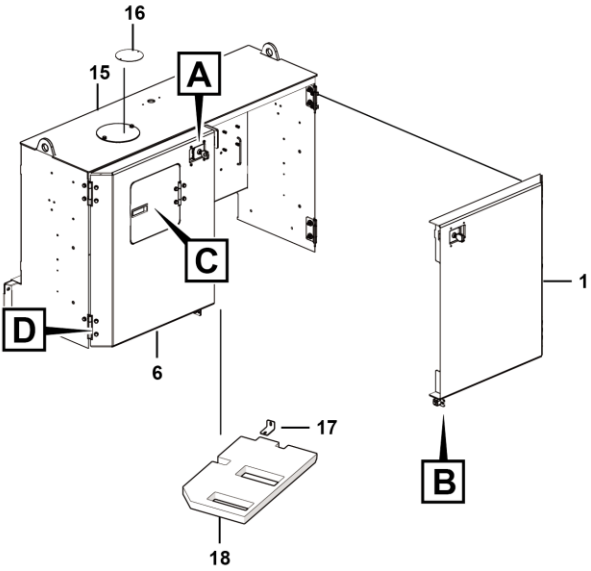
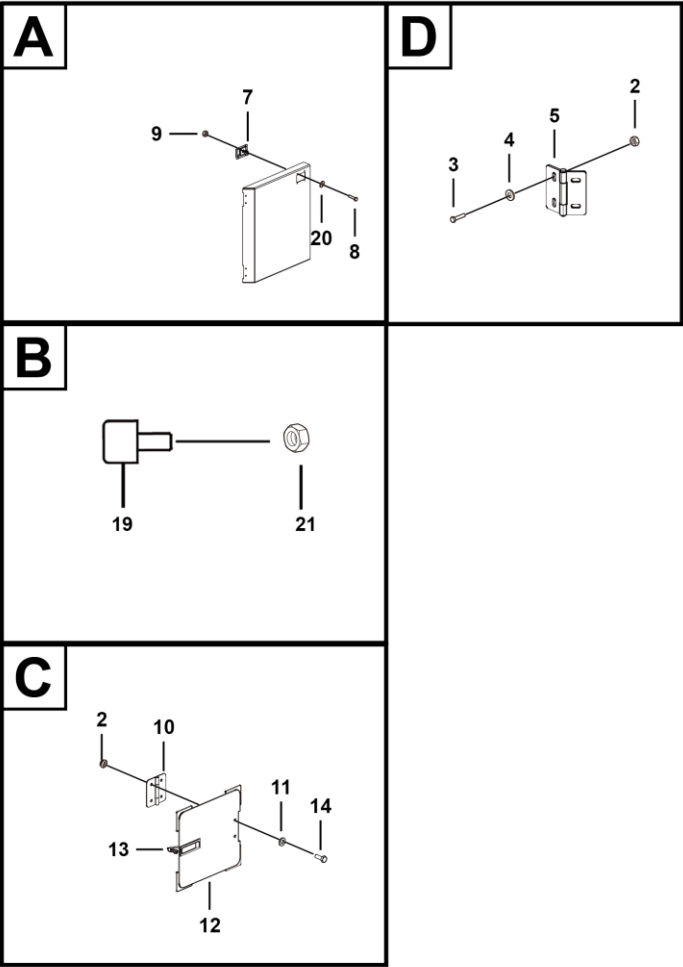
电池油箱侧 Battery and oil box side



D0800-2518001452.S1a

序号 Key	零件代号 Part No.	名称 Description	是否配件 Spare parts Y/N	数量 Qty	备注 Remarks
1	25180014501	油箱侧装配	N	1	
2	25180014491	电池侧装配	N	1	
3	4013010296	螺母GB889.1-M10flZnyc-8	Y	4	
4	4015010278	垫圈GB96.1-10flZnyc-480	Y	8	
5	4011010727	螺栓GB5783-M10*35flZnyc-8.8-480	Y	4	
6	4011010723	螺栓GB5783-M12*40flZnyc-8-480	Y	3	
7	4015010286	垫圈GB96.1-12flZnyc-480	Y	4	
8	4013010301	螺母GB889.1-M12flZnyc-8-480	Y	4	
9	4011010980	螺栓GB5783-M12*45flZnyc-8.8-480	Y	1	
10	4015010340	垫圈GB97.1-12flZnyc-300HV-480	Y	4	

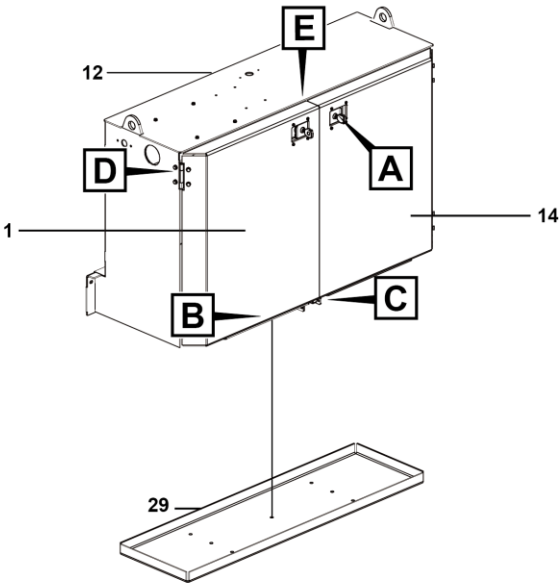
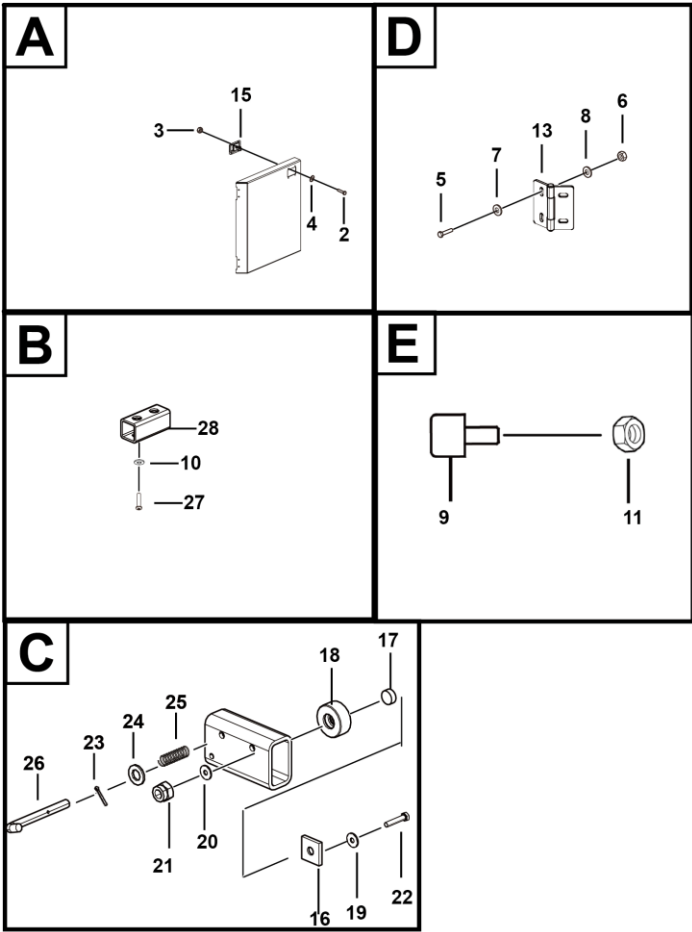
油箱侧装配 Oil box side



D0802-2518001450.S1a

序号 Key	零件代号 Part No.	名称 Description	是否配件 Spare parts Y/N	数量 Qty	备注 Remarks
1	25180016903	右门焊合	Door welding	Y	1
2	4013010297	螺母GB889.1-M8fZnyc-8-480	Nutgb889.1-m8flznyc-8-480	Y	24
3	4011010743	螺栓GB5783-M8*25fZnyc-8.8-480	Bolt gb5783-m8*25flznyc-8.8-480	Y	20
4	4015010289	垫圈GB96.1-8fZnyc-480	Washer gb96.1-8flznyc-480	Y	18
5	25180007361	铰链	Hinge	Y	4
6	25180016913	油箱门焊合	Door welding	Y	1
7	4190001576	锁MS866-27	Lock ms866-27	Y	2
8	4013010298	螺母GB6170-M5fZnyc-8-480	Nutgb6170-m5flznyc-8-480	Y	8
9	4014010108	螺钉GB818-M5*14fZnyc-4.8-480	Nutgb818-m5*14flznyc-4.8-480	Y	8
10	4190001521	合页CL253-27	Hinge cl253-27	Y	1
11	4015010280	垫圈GB97.1-8fZnyc-480	Washergb97.1-10flznyc-480	Y	30
12	25180000902	小门	Door	Y	1
13	4190001520	锁MS719-1CA	Lock ms719-1ca	Y	1
14	4011010711	螺栓GB5783-M8*20fZnyc-8.8-480	Boltgb5783-m8*20flznyc-8.8-480	Y	4
15	25180014363	油箱侧焊合	Oil box side	Y	1
16	25180002581	盖板	Plate	N	1
17	25180017162	折弯板	Plate	Y	5
18	25160023882	侧配重	Plate	N	1
19	25180013131	限位块	Plate	N	4
20	4015010283	垫圈GB97.1-5fZnyc-480	Washergb97.1-5flznyc-480	Y	8
21	4013010290	螺母GB6170-M10fZnyc-8-480	Nutgb6170-m8flznyc-8-480	Y	4

电池侧装配 Battery side

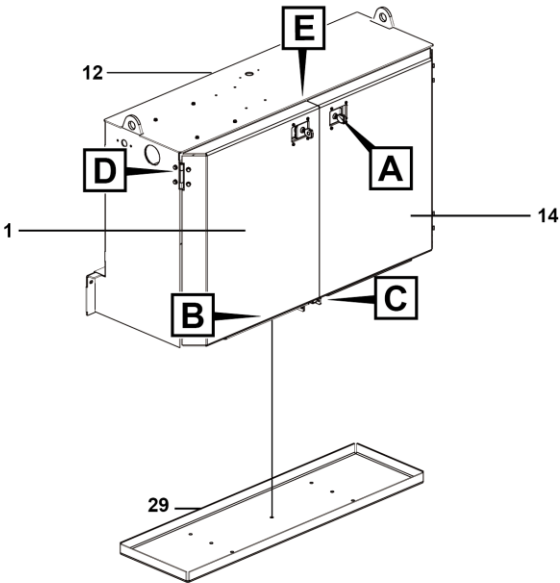
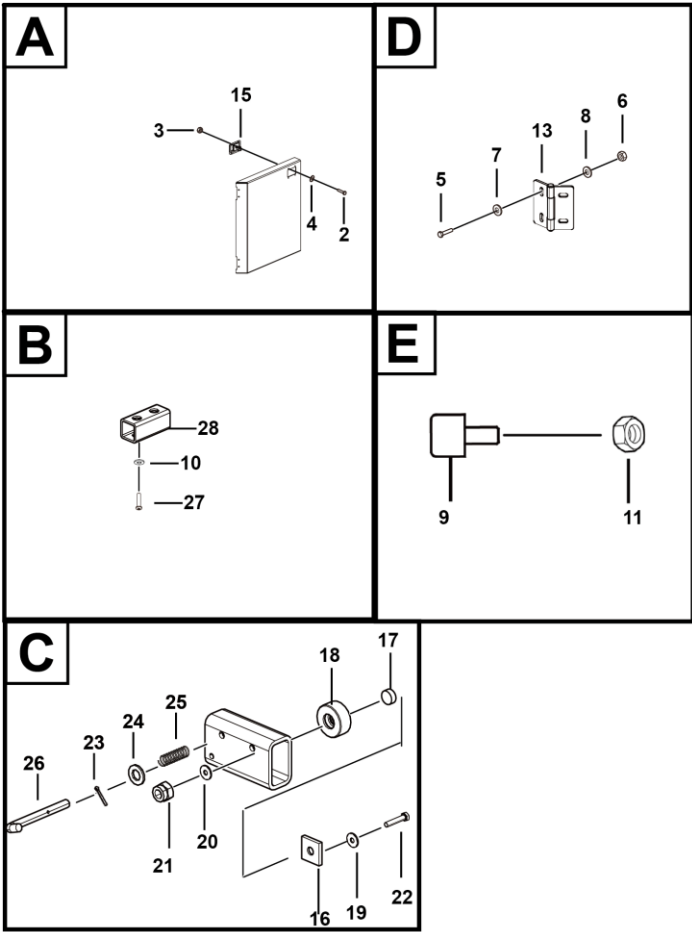


D0801-2518001449.S1a



序号 Key	零件代号 Part No.	名称 Description	是否配件 Spare parts Y/N	数量 Qty	备注 Remarks
1	25180016893	电池侧左门焊合	Door welding	Y	1
2	4014010108	螺钉GB818-M5*14flZnyc-4.8-480	Nutgb818-m5*14flznyc-4.8-480	Y	8
3	4013010298	螺母GB6170-M5flZnyc-8-480	Nutgb6170-m5flznyc-8-480	Y	8
4	4015010283	垫圈GB97.1-5flZnyc-480	Washergb97.1-5flznyc-480	Y	8
5	4011010743	螺栓GB5783-M8*25flZnyc-8.8-480	Bolt gb5783-m8*25flznyc-8.8-480	Y	16
6	4013010297	螺母GB889.1-M8flZnyc-8-480	Nutgb889.1-m8flznyc-8-480	Y	16
7	4015010289	垫圈GB96.1-8flZnyc-480	Washer gb96.1-8flznyc-480	Y	16
8	4015010280	垫圈GB97.1-8flZnyc-480	Washergb97.1-10flznyc-480	Y	16
9	25180013131	限位块	Plate	N	4
10	4015010279	垫圈GB97.1-10flZnyc-480	Washergb97.1-10flznyc-480	Y	4
11	4013010290	螺母GB6170-M10flZnyc-8-480	Nutgb6170-m8flznyc-8-480	Y	4
12	25180014353	电池箱侧焊合	Battery box	Y	1
13	25180007361	铰链	Hinge	Y	4
14	25180016903	右门焊合	Door welding	Y	1
15	4190001576	锁MS866-27	Lock ms866-27	Y	2
16	25160023952	隔板	Plate	Y	4
17	25160023961	轴套	Sleeve	Y	4
18	25180013982	拖轮	Wheel	Y	4
19	4015000439	垫圈GB96.1-16flZnyc-480	Washer	Y	4
20	4015010287	垫圈GB97.1-16flZnyc-480	Washer	Y	4
21	4013010302	螺母GB889.1-M16flZnyc-8-480	Nut	Y	4
22	4011010668	螺栓GB5782-M16*150flZnyc-12.9-480	Boltgb5782-m16*150flznyc-12.9-480	Y	4

电池侧装配 Battery side

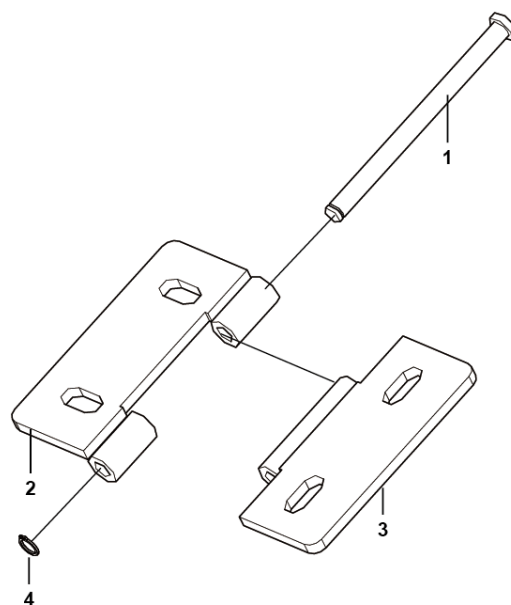


D0801-2518001449.S1a

序号 Key	零件代号 Part No.	名称 Description	是否配件 Spare parts Y/N	数量 Qty	备注 Remarks
23	4016010138	开口销GB91-3.2*26flZnyc-480-Q235A	Pin gb91-3.2*26flznyc-480-q235a	Y	2
24	4015010340	垫圈GB97.1-12flZnyc-300HV-480	Washer	Y	2
25	25180013951	弹簧	Spring	Y	2
26	25180017211	限位销	Tibe	Y	2
27	4011010976	螺栓GB5783-M10*50flZnyc-8.8-480	Screw gb5783-m10*50flznyc-8.8-480	Y	4
28	25180013971	限位管	Tube	Y	2
29	25180013913	托盘焊合	Plate	Y	1



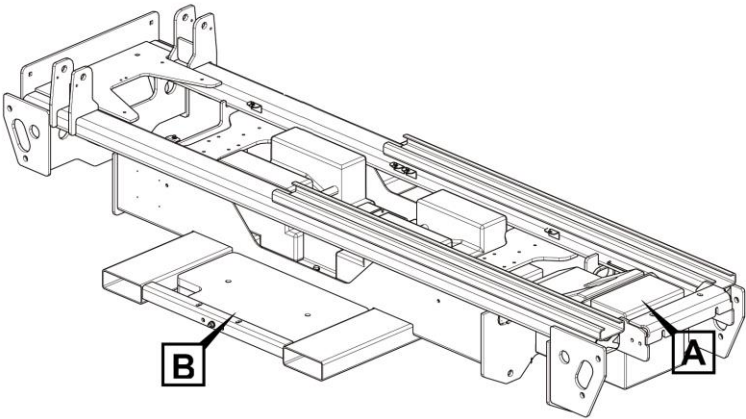
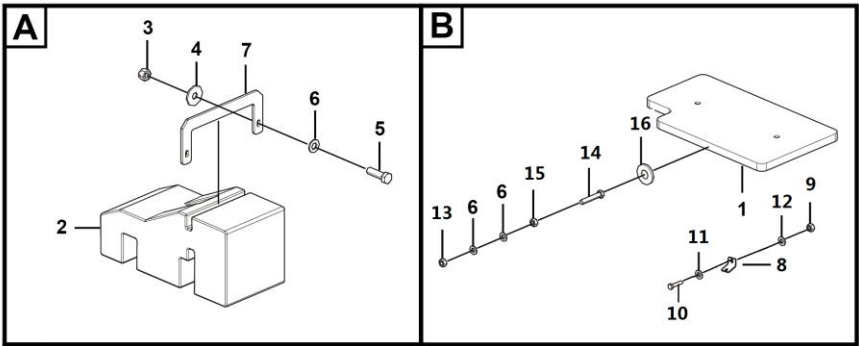
## 铰链 Hinge



D0800-2518000736.S



配重总成    Balance weight



D2800-2528000247.S

序号 Key	零件代号 Part No.	名称 Description	是否配件 Spare parts Y/N	数量 Qty	备注 Remarks
1	25160023882	侧配重	N	2	
2	25160010131	后配重	Y	1	
3	4013010358	螺母GB6185-M12fZnyc-8-480	Y	2	
4	4015010286	垫圈GB96.1-12fZnyc-480	Y	2	
5	4011010980	螺栓GB5783-M12*45fZnyc-8.8-480	Y	2	
6	4015010340	垫圈GB97.1-12fZnyc-300HV-480	Y	4	
7	25160010142	后配重卡板	Y	1	
8	25180017162	折弯板	Y	4	
9	4013010297	螺母GB889.1-M8fZnyc-8-480	Y	2	
10	4011010708	螺栓GB5783-M8*30fZnyc-8.8-480	Y	2	
11	4015010289	垫圈GB96.1-8fZnyc-480	Y	2	
12	4015010280	垫圈GB97.1-8fZnyc-480	Y	2	
13	4013010315	螺母GB6172.1-M12fZnyc-8-480	Y	1	
14	4011011131	螺栓GB5783-M12*65fZnyc-10.9-480	Y	1	
15	4013010295	螺母GB6170-M12fZnyc-8-480	Y	1	
16	25160009091	压板	Y	1	

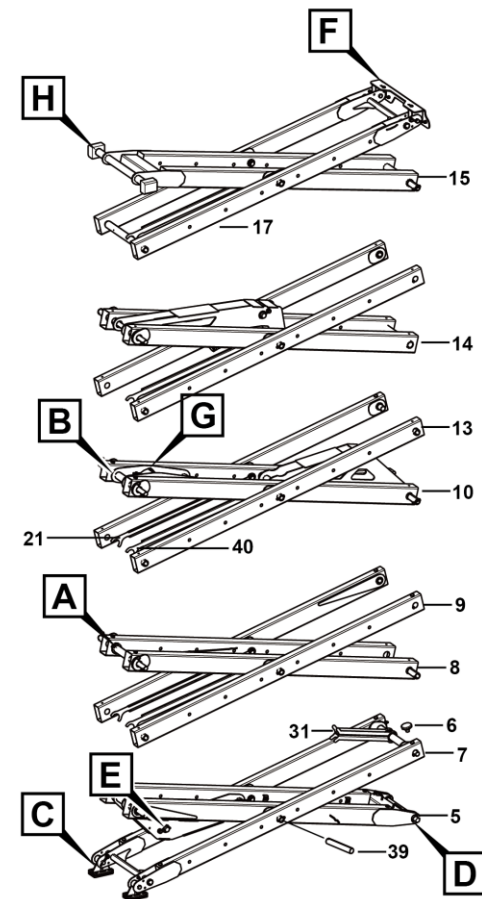
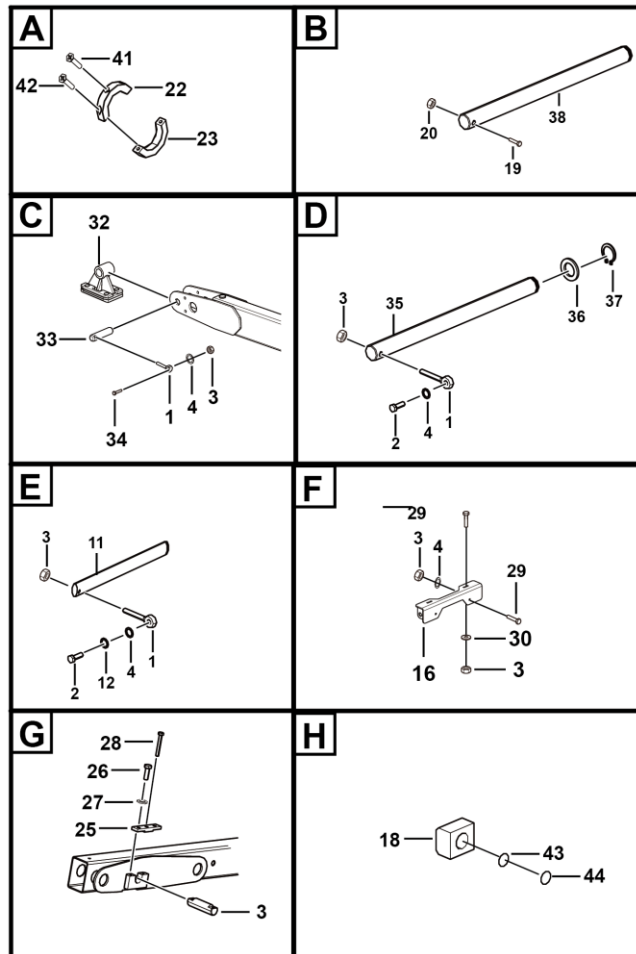




**G 叉架总成**  
**SCISSOR ASSY INSTALLATION ASSEMBLY**

**临 工 集 团 济 南 重 机 有 限 公 司**  
**LINGONG GROUP JINAN HEAVY MACHINERY CO., LTD.**

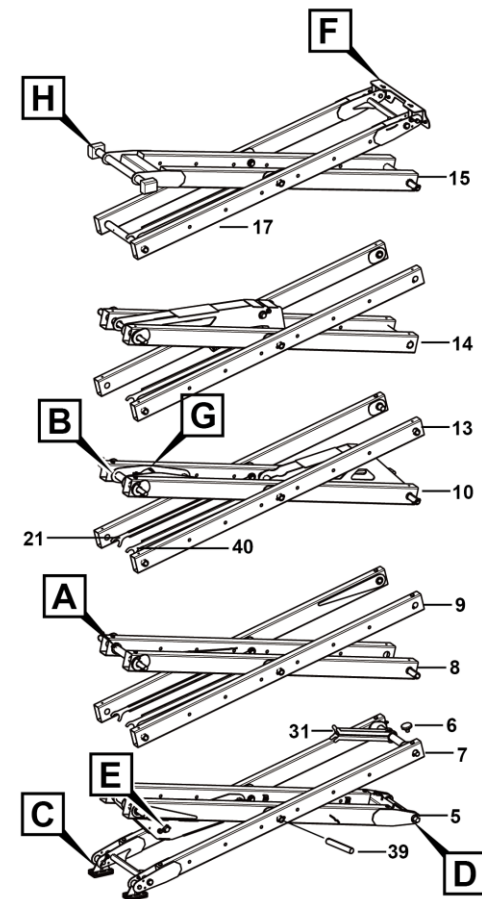
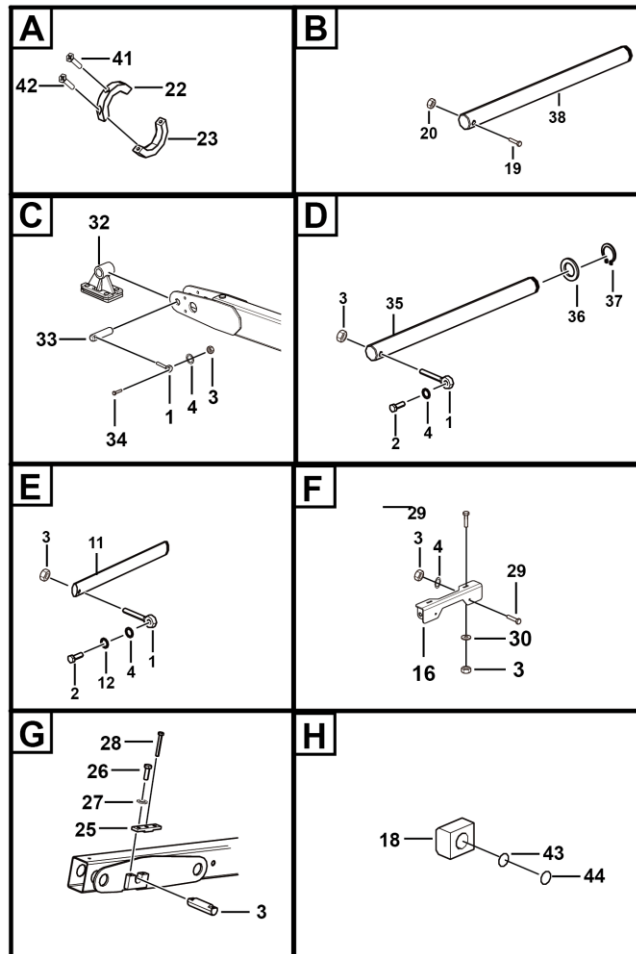
## 叉架总成 Scissor assy installation



G1300-2520003080.S

序号 Key	零件代号 Part No.	名称 Description	是否配件 Spare parts Y/N	数量 Qty	备注 Remarks
1	25220000611	插销	Pin	Y	8
2	4011010982	螺栓GB5783-M12*55flZnyc-8.8-480	Screw gb5783-m12*55flznyc-8.8-480	Y	4
3	4013010301	螺母GB889.1-M12flZnyc-8-480	Nutgb889.1-m12flznyc-8-480	Y	14
4	4015010340	垫圈GB97.1-12flZnyc-300HV-480	Washer	Y	12
5	25200030812	第一内臂总成	Inner arm	Y	1
6	25200000402	橡胶塞	Rubber plug	Y	32
7	25200030822	第一外臂焊合	First outer link weldment	Y	1
8	25200030832	第二内臂总成	Inner arm	Y	1
9	25200030842	第二外臂焊合	Outer arm	Y	2
10	25200030852	第三内臂总成	Inner arm	Y	1
11	25200007991	轴1.75 " *7.48 "	Pin	Y	3
12	25200008471	厚垫圈	Washer	Y	3
13	25200030862	第三外臂焊合	Outer arm	Y	4
14	25200030873	第四内臂总成	Inner arm	Y	1
15	25200030892	第五内臂总成	Inner arm	Y	1
16	25200007502	上固定座合件	Seat	Y	1
17	25200030882	第五外臂焊合	Outer arm	Y	1
18	25200008182	滑块	Block	Y	2
19	4011010729	螺栓GB5782-M10*65flZnyc-8.8-480	Bolt	Y	18
20	4013010296	螺母GB889.1-M10flZnyc-8	Nut gb889.1-m10flznyc-8	Y	18
21	25200030761	左走线板装配	Plate	Y	2
22	25200030771	固定环	Ring	Y	6

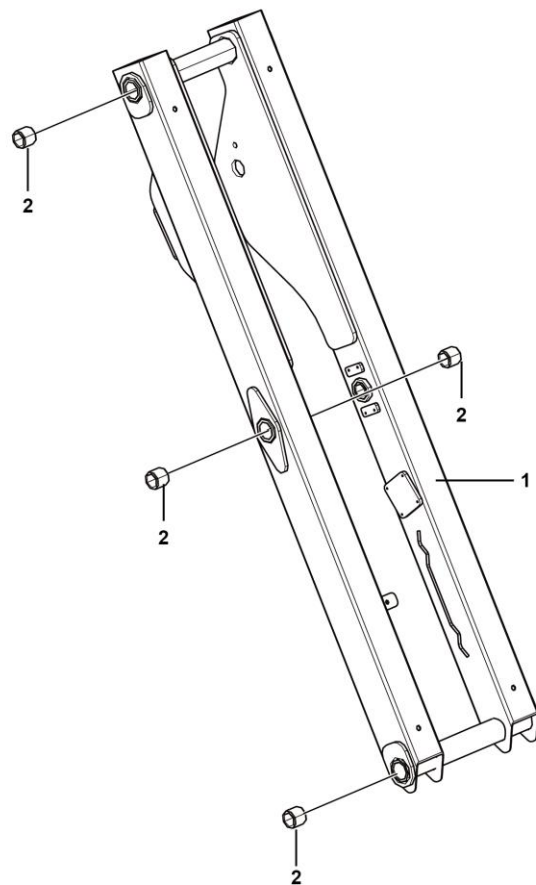
# 叉架总成 Scissor assy installation



G1300-2520003080.S

序号 Key	零件代号 Part No.	名称 Description	是否配件 Spare parts Y/N	数量 Qty	备注 Remarks
23	25200030781	固定环	Y	6	
24	25200031001	轴1.75"*5.79"	Y	1	
25	25200030621	销轴压板	Y	2	
26	4011010707	螺栓GB5783-M10*30flZnyc-8.8-480	Y	4	
27	4015010279	垫圈GB97.1-10flZnyc-480	Y	6	
28	4011010724	螺栓GB5782-M10*75flZnyc-8.8	Y	2	
29	4011011010	螺栓GB14-M12*40flZnyc-8.8	Y	6	
30	4015010286	垫圈GB96.1-12flZnyc-480	Y	2	
31	25200007521	保护臂装配	N	1	
32	25200007541	滑块装配	N	2	
33	25200007581	轴1.25 " *5 "	Y	4	
34	4011010980	螺栓GB5783-M12*45flZnyc-8.8-480	Y	4	
35	25200030631	固定板销轴	Y	1	
36	25200000491	垫圈	Y	23	
37	4015010249	挡圈JB4342-38-65Mn	Y	19	
38	25200007981	轴1.5 " *29.69 "	Y	8	
39	25200007971	轴1.5 " *10.41 "	N	10	
40	25200030741	右走线板装配	Y	4	
41	4014010112	螺钉GB819.1-M6*20flZnyc-4.8	Y	6	
42	4014010128	螺钉GB70.1-M5*25flZnyc-8.8-480	Y	12	
43	25200009921	板	Y	2	
44	25200009931	板	Y	2	

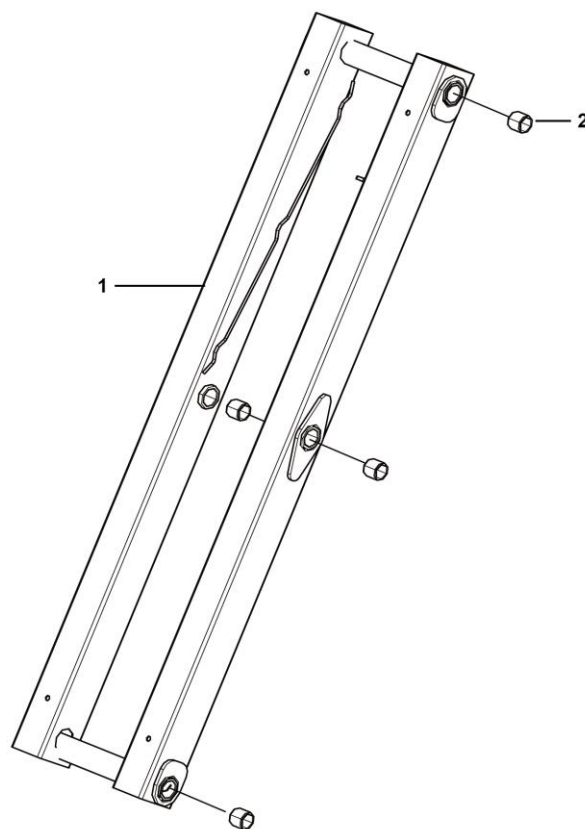
第一内臂总成 Inner arm



G1300-2520003081.S



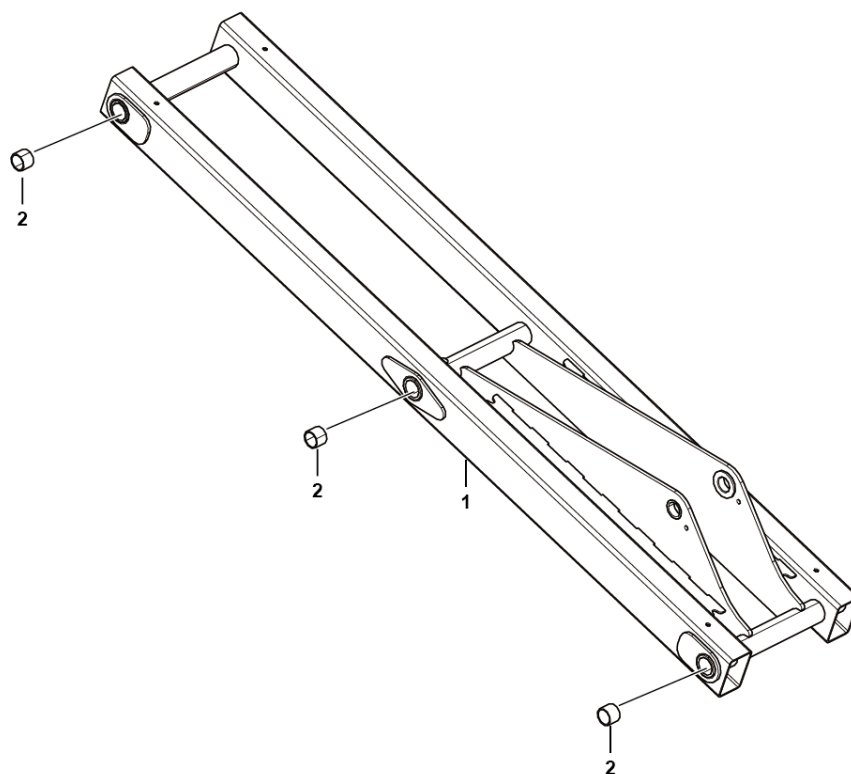
第二内臂总成 Inner arm





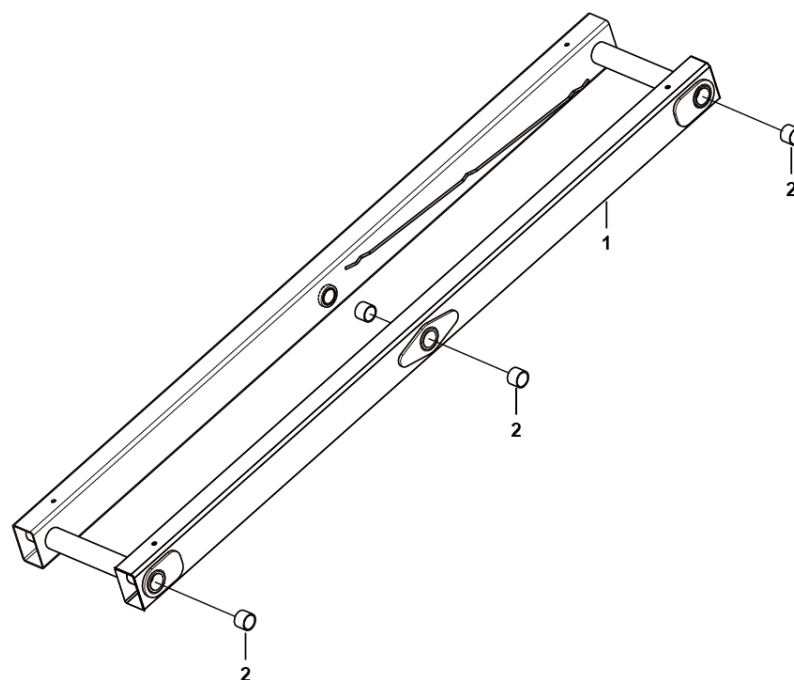


第三内臂总成 Inner arm



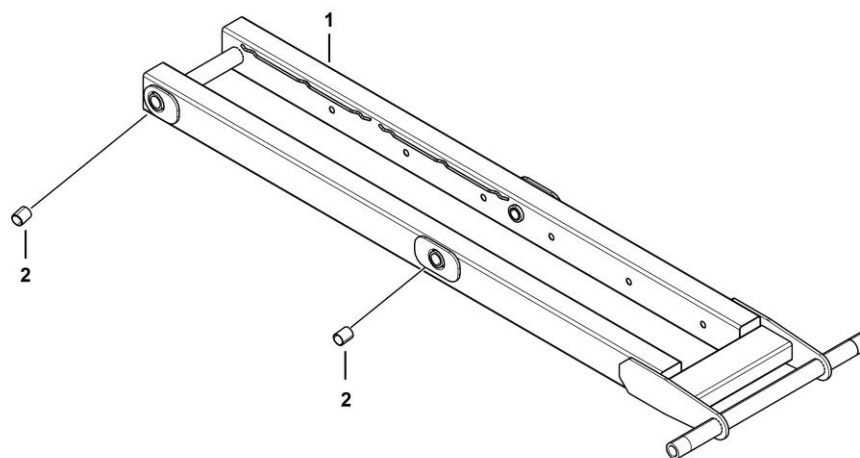


第四内臂总成 Inner arm



[illegible]

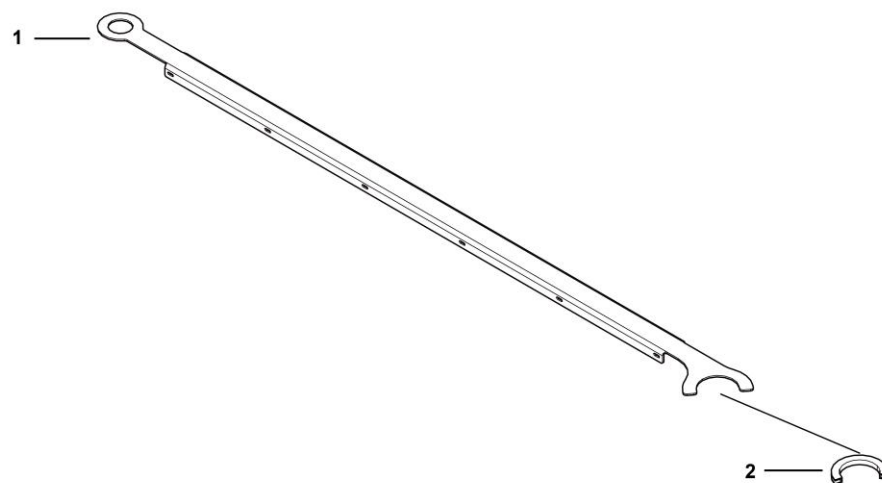
第五内臂总成 Inner arm



G1300-2520003089.S



左走线板装配 Plate

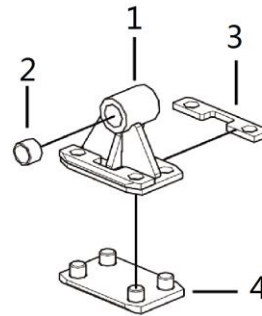


G1300-2520003076.S





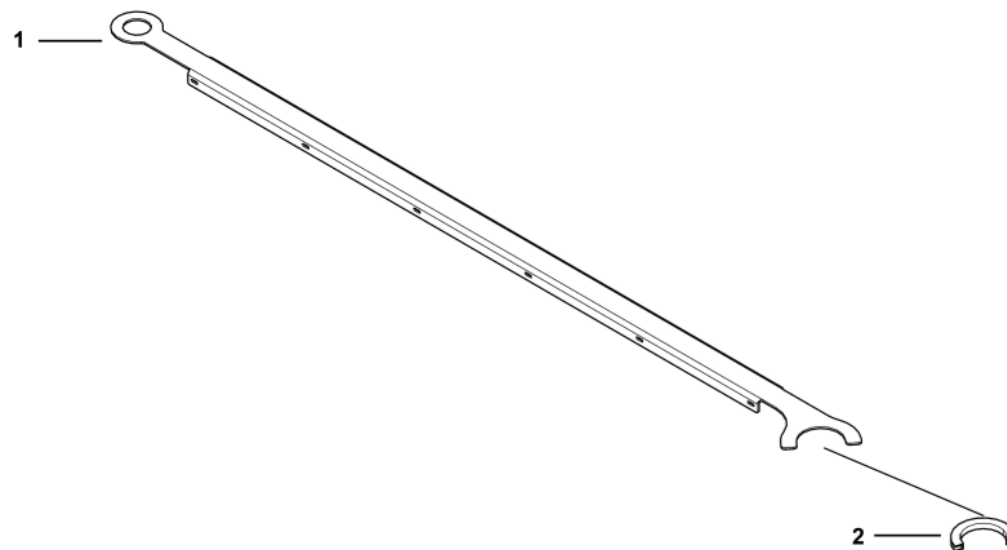
滑块装配 Link slider assembly



G1300-2520000754.S

序号 Key	零件代号 Part No.	名称 Description	是否配件 Spare parts Y/N	数量 Qty	备注 Remarks
1	25200008051	支座	Y	1	
2	25220000661	轴套1.25 " *1.5 " *1 "	Y	2	
3	25200008111	滑块	Y	2	
4	25200008101	滑块	Y	1	

右走线板装配 Plate



G1300-2520003074.S





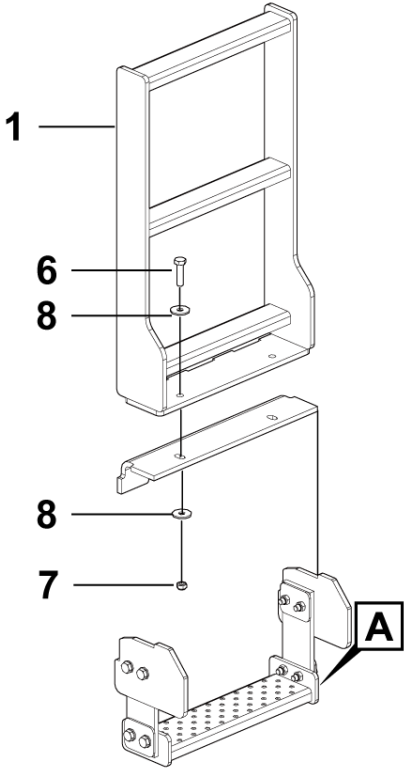
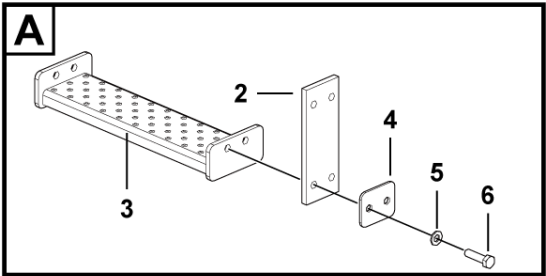
# **I 覆盖件附件**

## **COVER ACCESSORY**

**临 工 集 团 济 南 重 机 有 限 公 司**

**LINGONG GROUP JINAN HEAVY MACHINERY CO., LTD.**

覆盖件附件    Cover



I1700-2529000222.S1a



序号 Key	零件代号 Part No.	名称 Description	是否配件 Spare parts Y/N	数量 Qty	备注 Remarks
1	25290002233	上梯子总成	N	1	
2	25290002301	尼龙	N	2	
3	25290002261	下梯子焊接	N	1	
4	25290002271	垫板	N	4	
5	4015000168	垫圈GB97.1-12EpZn-300HV	Y	8	
6	4011000207	螺栓GB5783-M12*45EpZn-8.8	Y	12	
7	4013000158	螺母GB889.1-M12EpZn-8	Y	12	
8	4015000186	垫圈GB96.1-12EpZn-300HV	Y	8	



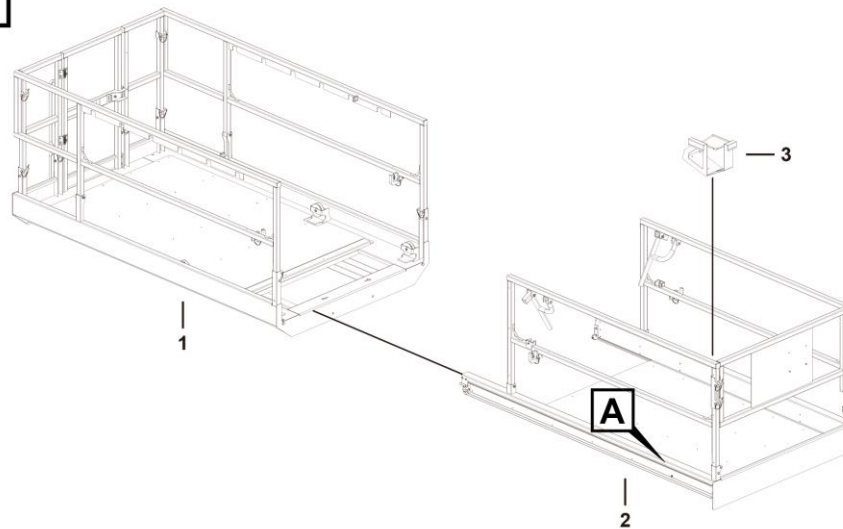
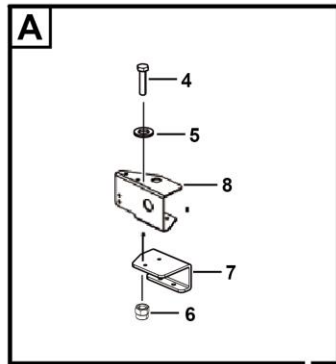


**K 平台总成**  
**PLATFORM ASSEMBLY**

**临 工 集 团 济 南 重 机 有 限 公 司**

**LINGONG GROUP JINAN HEAVY MACHINERY CO., LTD.**

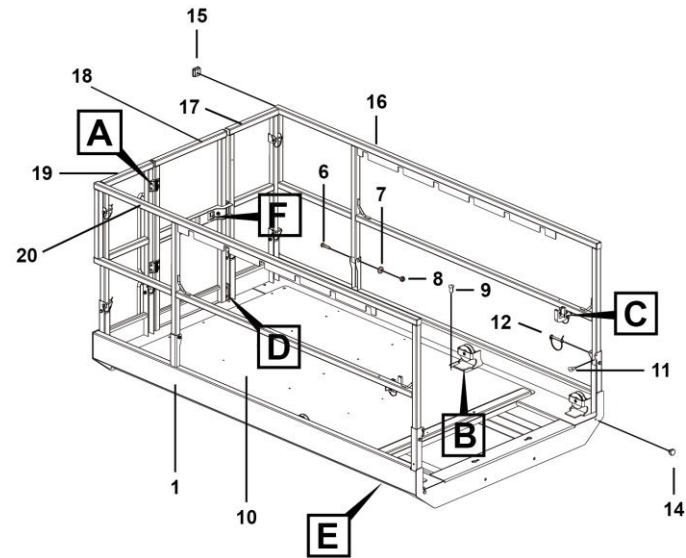
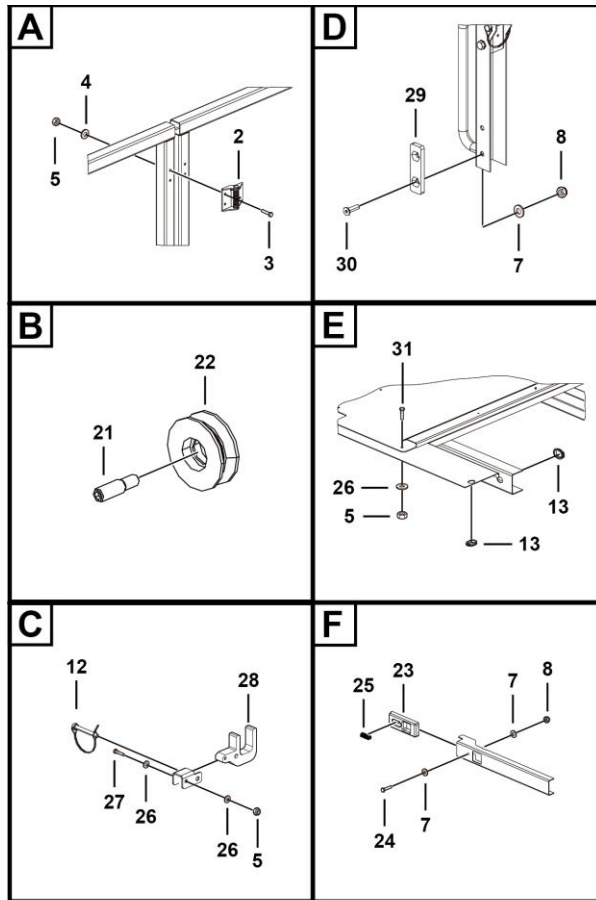
平台总成 Platform



K2100-2521004940.S

序号 Key	零件代号 Part No.	名称 Description	是否配件 Spare parts Y/N	数量 Qty	备注 Remarks
1	25210012681	主平台	N	1	
2	25210012691	延伸平台	N	1	
3	25210049252	PCU支架焊合	Y	1	
4	4011010743	螺栓GB5783-M8*25flZnyc-8.8-480	Y	2	
5	4015010280	垫圈GB97.1-8flZnyc-480	Y	4	
6	4013010297	螺母GB889.1-M8flZnyc-8-480	Y	2	
7	25180014032	折弯板	Y	1	
8	25210042192	插头固定装配	N	1	

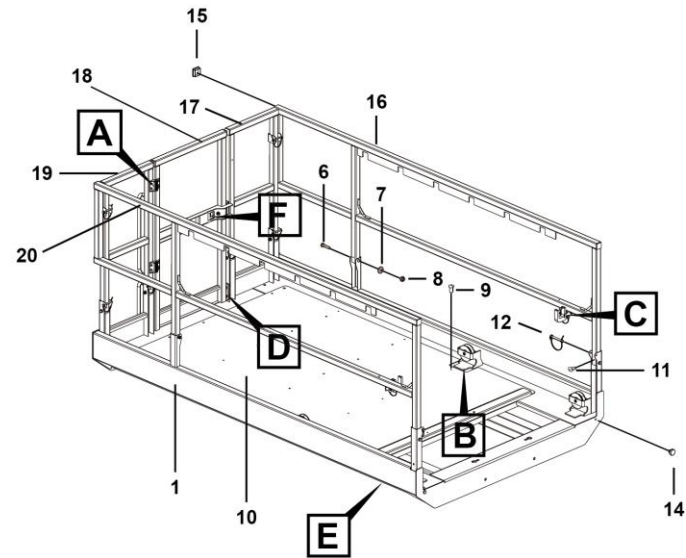
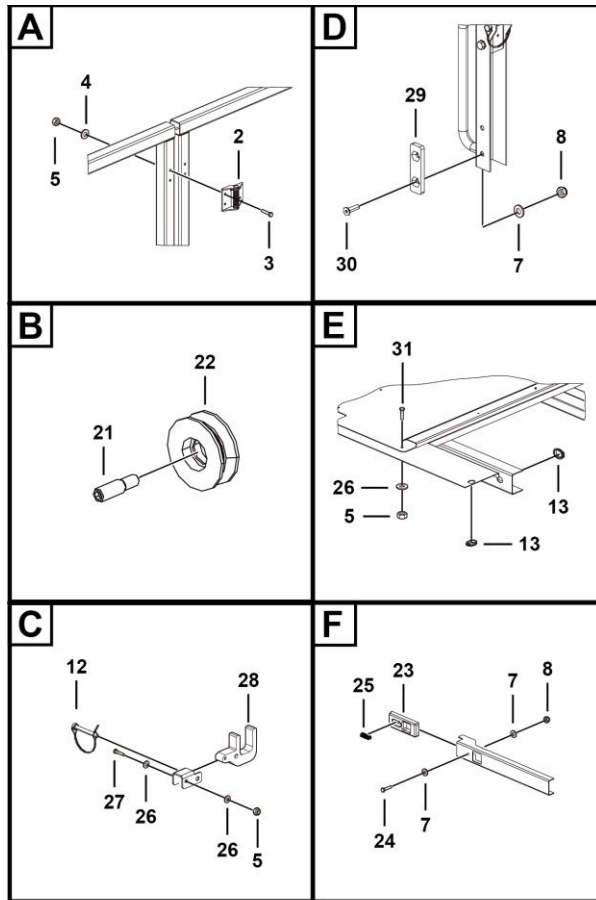
## 主平台 Main platform



K2101-2521001268.S1c

序号 Key	零件代号 Part No.	名称 Description	是否配件 Spare parts Y/N	数量 Qty	备注 Remarks
1	25210021835	主平台底板焊合	Y	1	
2	4190001525	弹簧铰链X022	Y	2	
3	4011010517	螺栓GB5782-M6*55EpZn-8.8	Y	8	
4	4015000198	垫圈GB96.1-6EpZn-300HV	Y	8	
5	4013000211	螺母GB889.1-M6EpZn-8	Y	14	
6	4011000051	螺栓GB5782-M10*70EpZn-8.8	Y	8	
7	4015000162	垫圈GB97.1-10EpZn-300HV	Y	18	
8	4013000189	螺母GB889.1-M10EpZn-8	Y	9	
9	4019010206	抽芯铆钉GB12619-6×14	Y	29	
10	25210021841	主平台底板	Y	1	
11	4019010209	抽芯铆钉GB12619-5*9	Y	10	
12	4190703890	D型销8*65带200mm链和钢片	Y	10	
13	25210003151	橡胶套	Y	2	
14	4190002363	铆接脚462786	Y	2	
15	4190002358	方形管塞111541	Y	10	
16	25210021871	主平台左侧栏	Y	1	
17	25210021852	左后栏	Y	1	
18	25210021893	平台门	Y	1	
19	25210021861	右后栏	Y	1	
20	25210021881	主平台右侧栏	Y	1	
21	25210012861	轴	Y	4	
22	25210005561	V轮	Y	4	

## 主平台 Main platform



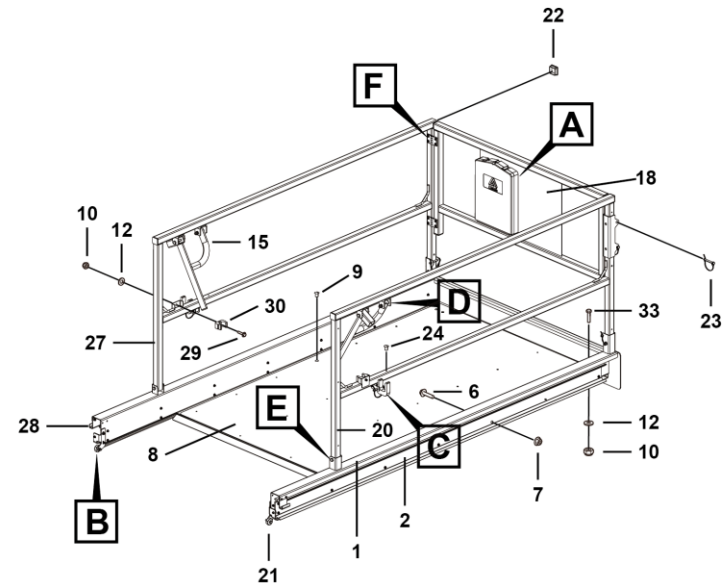
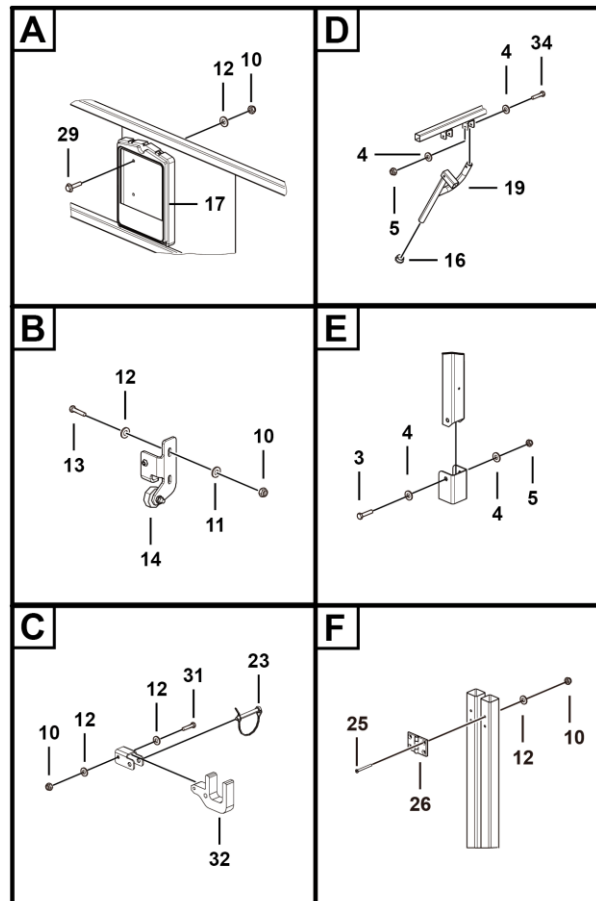
K2101-2521001268.S1c



序号 Key	零件代号 Part No.	名称 Description	是否配件 Spare parts Y/N	数量 Qty	备注 Remarks
23	25210011051	塑料块	Block	Y	1
24	4011000048	螺栓GB5782-M10*50EpZn-8.8	Bolt gb5782-m10*50epzn-8.8	Y	1
25	25210002071	弹簧	Spring	Y	1
26	4015000207	垫圈GB97.1-6EpZn-300HV	Washer gb97.1-6epzn-300hv	Y	8
27	4011000611	螺栓GB5782-M6*45EpZn-8.8	Bolt	Y	2
28	25210005791	导向块	Guiding block	Y	2
29	4014010189	螺栓GB15-1988-M6×20	Bolt	Y	4



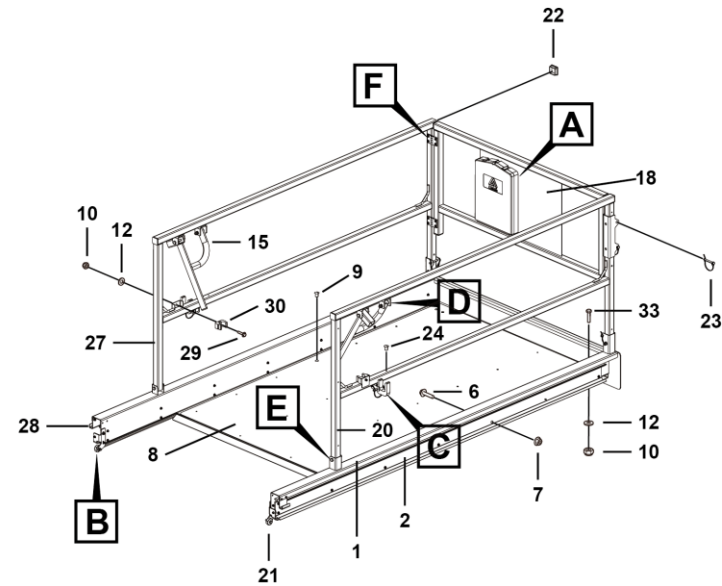
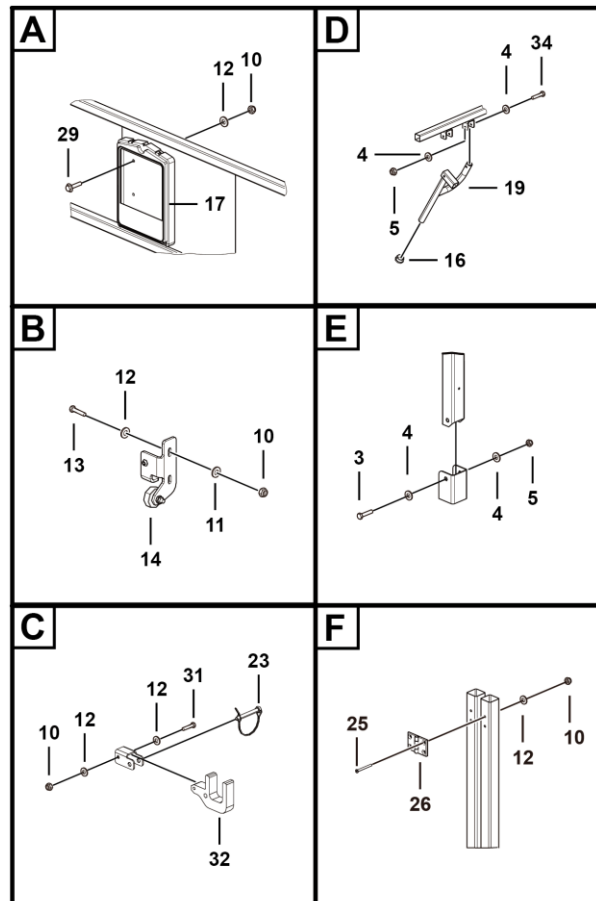
## 延伸平台 Extension platform



K2102-2521001269.S1c

序号 Key	零件代号 Part No.	名称 Description	是否配件 Spare parts Y/N	数量 Qty	备注 Remarks
1	25210022082	延伸平台底板焊合	Y	1	
2	25210012591	导轨	Y	2	
3	4011000051	螺栓GB5782-M10*70EpZn-8.8	Y	4	
4	4015000162	垫圈GB97.1-10EpZn-300HV	Y	16	
5	4013000189	螺母GB889.1-M10EpZn-8	Y	8	
6	4011000153	螺栓GB16674-M6*16EpZn-8.8	Y	28	
7	4013010323	螺母GB6177.1-M6EpZn-8	Y	28	
8	25210022142	延伸平台底板	Y	1	
9	4019010206	抽芯铆钉GB12619-6×14	Y	24	
10	4013000211	螺母GB889.1-M6EpZn-8	Y	28	
11	4015000198	垫圈GB96.1-6EpZn-300HV	Y	4	
12	4015000207	垫圈GB97.1-6EpZn-300HV	Y	34	
13	4011000101	螺栓GB5783-M6*20EpZn-8.8	Y	8	
14	25210013531	左限位装配	N	1	
15	25210012792	左把手	Y	1	
16	4190002360	圆形管塞111530	Y	2	
17	25210000821	文件盒	Y	1	
18	25210012761	前栏	Y	1	
19	25210012802	右把手	Y	1	
20	25210022101	延伸平台右侧栏	Y	1	
21	25210013541	右限位装配	N	1	
22	4190002358	方形管塞111541	Y	7	

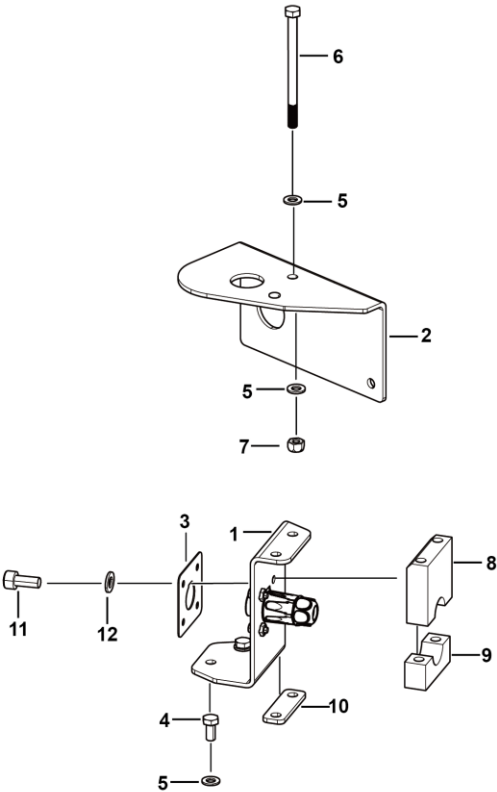
## 延伸平台 Extension platform



K2102-2521001269.S1c

序号 Key	零件代号 Part No.	名称 Description	是否配件 Spare parts Y/N	数量 Qty	备注 Remarks
23	4190703890	D型销8*65带200mm链和钢片	Pin	Y	6
24	4019010209	抽芯铆钉GB12619-5*9	Rivet	Y	6
25	4014010105	螺钉GB70.3-M6*60EpZn-8.8	Screw	Y	8
26	4190003508	金属合页SR 5506-468163	Hinge sr 5506-468163	N	2
27	25210022091	延伸平台左侧栏	Left guardrail of extension platform	Y	1
28	25210012851	折弯板	Bending plate	Y	2
29	4011000154	螺栓GB16674-M6*20EpZn-8.8	Bolt gb16674-m6*20epzn-8.8	Y	6
30	25210012811	固定块	Fixed block	Y	2
31	4011000611	螺栓GB5782-M6*45EpZn-8.8	Bolt	Y	2
32	25210005791	导向块	Guiding block	Y	2
33	4011010420	螺栓GB12-M6*20EpZn-8.8	Bolt gb12-m6*20epzn-8.8	Y	4
34	4011000052	螺栓GB5782-M10*75EpZn-8.8	Bolt gb5782-m10*75epzn-8.8	Y	4

插头固定装配    Pcu installation assembly



K2107-2521004219.S

序号 Key	零件代号 Part No.	名称 Description	是否配件 Spare parts Y/N	数量 Qty	备注 Remarks
1	25210041901	支架焊接	Y	1	
2	25210042182	护板	Y	1	
3	25210041871	插头挡板	Y	1	
4	4011000180	螺栓GB5783-M8*12EpZn-8.8	Y	2	
5	4015000072	垫圈GB97.1-8EpZn-300HV	Y	6	
6	4011000588	螺栓GB5782-M8*110EpZn-8.8	Y	2	
7	4013010118	螺母GB6185-M8EpZn-8	Y	2	
8	25210041911	上插头固定夹	Y	1	
9	25210036671	下插头固定夹	Y	1	
10	25300005821	压板	Y	1	
11	4014010175	螺钉GB70.1-M5*12EpZn-8.8	Y	4	
12	4015000110	垫圈GB97.1-5EpZn-300HV	Y	4	



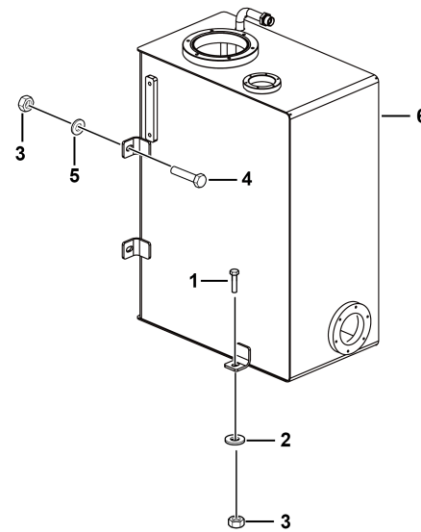


**L 液压系统**  
**HYDRAULIC SYSTEM**

**临工集团济南重机有限公司**

**LINGONG GROUP JINAN HEAVY MACHINERY CO., LTD.**

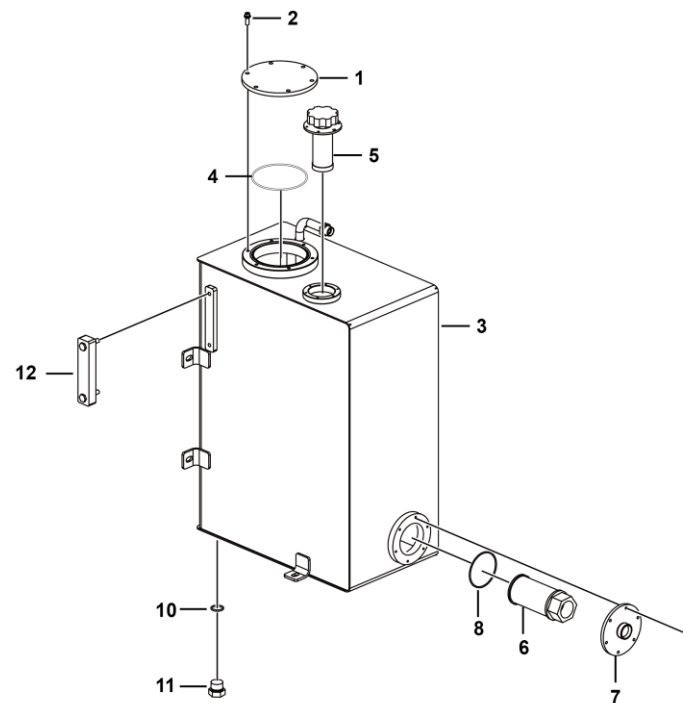
液压油箱总成 Hydraulic oil tank



L2200-2510000314.S



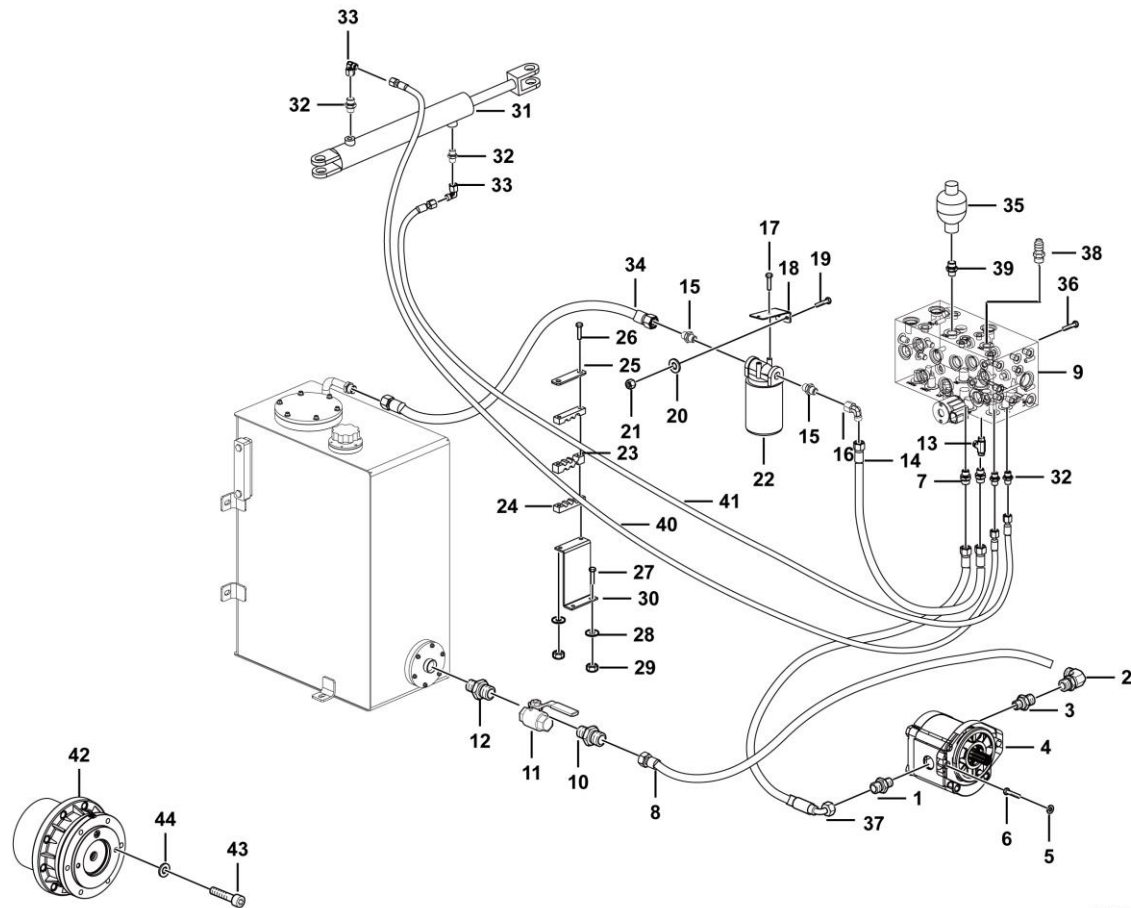
液压油箱配送总成 Hydraulic oil tank assembly



L2200-2510000297.S

序号 Key	零件代号 Part No.	名称 Description	是否配件 Spare parts Y/N	数量 Qty	备注 Remarks
1	25100000571	法兰盘	Flange	Y	1
2	4011010966	螺栓GB16674-M8*20flZnyc-8.8-480	Bolt gb16674-m8*20flznyc-8.8-480	Y	6
3	25100000942	油箱焊接体	Hydraulic tank body	Y	1
4	4030000633	O形圈GB3452.1-128*3.55G	O-ring gb3452.1-128*3.55g	Y	1
5	4120001427	空气滤清器EF2-32	Ari filter	Y	1
6	4120001424	吸油过滤器WU-63x180-J	Oil filter	Y	1
7	25100001001	吸油法兰总成	Flange assembly	Y	1
8	4030000622	O形圈GB3452.1-77.5*3.55G	O-ring gb3452.1-77.5*3.55g	Y	1
9	4011010735	螺栓GB16674-M6*16flZnyc-8.8-480	Bolt	Y	6
10	4041001264	O形圈LGB168-22331	O-ring lgb168-22331	Y	1
11	4041001057	螺塞LGB135-02732	Plug lgb135-02732	Y	1
12	4120706260	液位计YWZ-350T	Content gage	Y	1

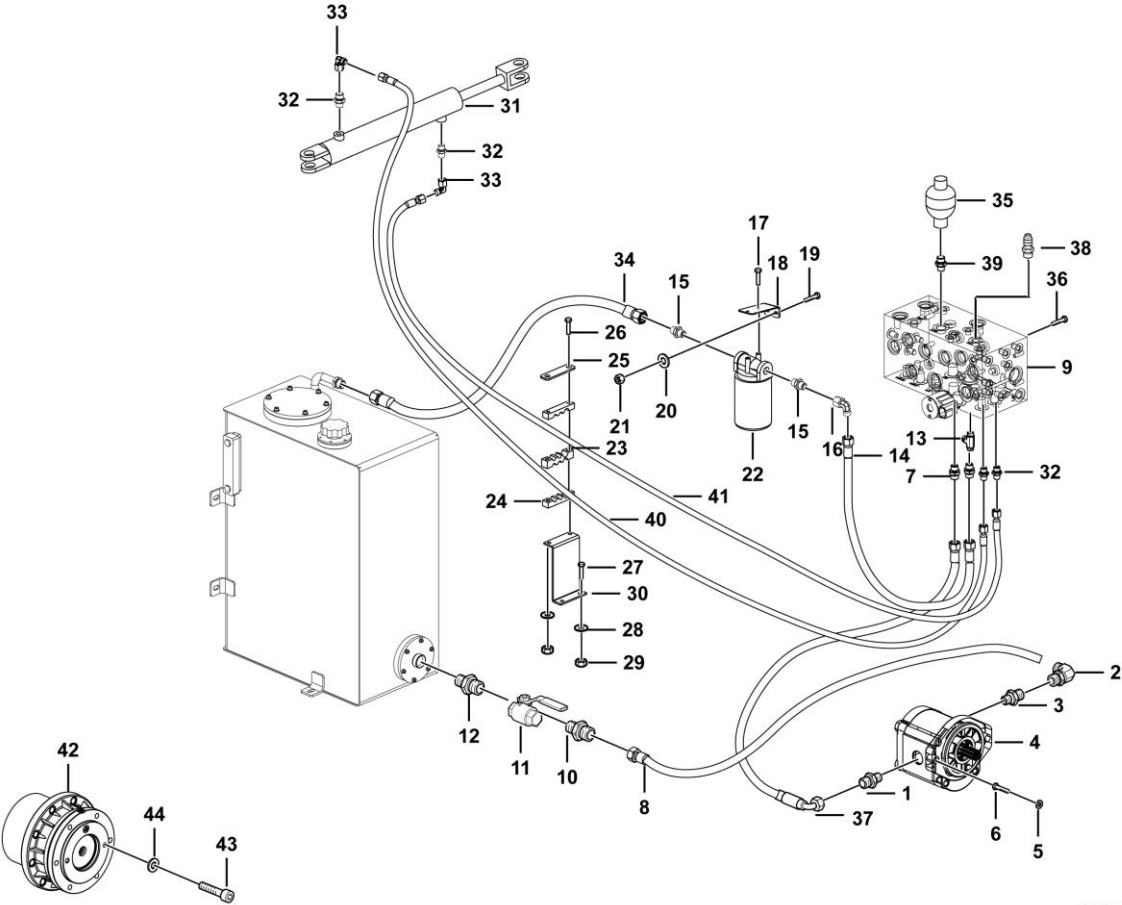
行走液压总成 Drive hydraulic assembly



L2300-2507000383.S1e

序号 Key	零件代号 Part No.	名称 Description	是否配件 Spare parts Y/N	数量 Qty	备注 Remarks
1	4120001500	接头1CB-18-08WD	Joint1cb-18-08wd	Y	1
2	4120002078	直角接头2C9-26Z	Rectangular connector 2c9-26z	Y	1
3	4120001370	直通接头1CB-26-08WD	Joint 1cb-26-08wd	Y	1
4	4120001488	齿轮泵A101098620	Gear pump	Y	1
5	4015000152	垫圈GB97.1-10EpZn-300HV	Washer	Y	2
6	4011010425	螺栓3/8-24UNF-2B*31-10.9	Screw	Y	2
7	4120001499	接头1CB-18-06WD	Joint1cb-18-06wd	Y	2
8	4120704262	软管 J20411-26-10TZ/J20441-26-10TZ*SR1SN-10*660	Pipe j20411-26-10tz/j20441-26-10tz*sr1sn-10*660	Y	1
9	4120703335	剪叉平台控制阀ST4830-AC00	Valve manifold	Y	1
10	4120001768	直接头1CB-26-12WD	Nipple 1cb-26-12wd	Y	1
11	4120703476	球阀Q11F-16P-3/4"	Ball valve	Y	1
12	4120703477	端直通组合接头EGE18LR3/4ED	Joint	Y	1
13	4190000997	三通接头CC-18	Nipple	Y	1
14	4120703814	软管J20411-18-08TZ*SR1SN-08*800	Pipej20411-18-08tz*sr1sn-08*800	Y	1
15	25070000091	直接头	Joint	Y	2
16	4190000996	组合接头2C9-18	Nipple	Y	1
17	4011000153	螺栓GB16674-M6*16EpZn-8.8	Bolt gb16674-m6*16epzn-8.8	Y	2
18	25070003551	回油过滤器安装板	Plate	Y	1
19	4011000082	螺栓GB5783-M10*25EpZn-8.8	Bolt gb5783-m10*25epzn-8.8	Y	2
20	4015000162	垫圈GB97.1-10EpZn-300HV	Washer gb97.1-10epzn-300hv	Y	2
21	4013000007	螺母GB6170-M10EpZn-8	Nut gb6170-m10epzn-8	Y	2
22	4120001128	过滤器SP-06×10	Filter	Y	1

行走液压总成    Drive hydraulic assembly

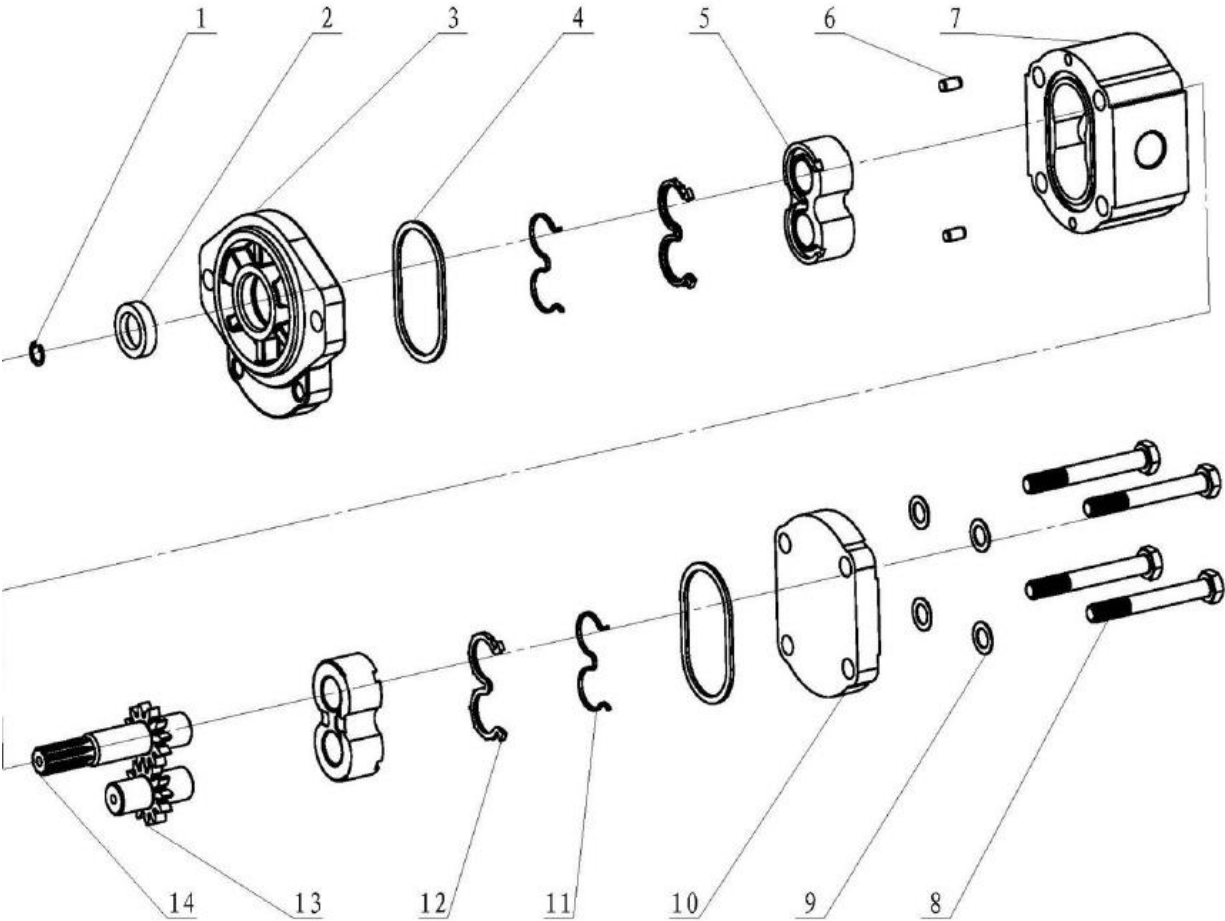


L2300-2507000383.S1e



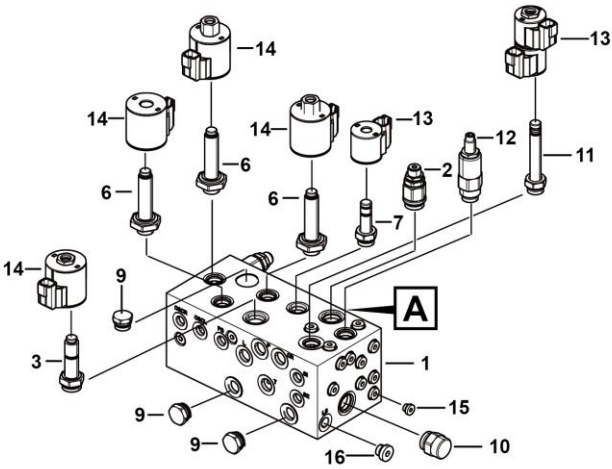
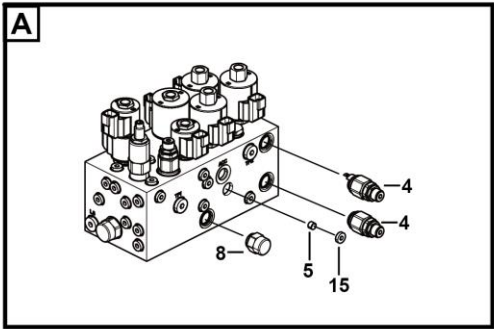
序号 Key	零件代号 Part No.	名称 Description	是否配件 Spare parts Y/N	数量 Qty	备注 Remarks
23	25070002251	管夹	Y	1	
24	25070002261	管夹1	Y	2	
25	25070002271	板	Y	1	
26	4011000169	螺栓GB16674-M8*70EpZn-8.8	Y	2	
27	4011000455	螺栓GB16674-M8*25EpZn-8.8	Y	2	
28	4015000072	垫圈GB97.1-8EpZn-300HV	Y	8	
29	4013000033	螺母GB6170-M8EpZn-8	Y	4	
30	25070002241	安装板	Y	1	
31	4120706354	转向油缸50*25*244-530	Y	1	
32	4120001368	直通接头1CB-14-04WD	Y	4	
33	4120000868	直角接头2C9-14Z	Y	2	
34	4120704160	软管 J20411-18-08TZ/20411-22-08*SR1SN-08*310	Y	1	
35	4120001434	蓄能器	Y	1	
36	4011010711	螺栓GB5783-M8*20fZnyc-8.8-480	Y	4	
37	4120703604	软管 J20411-18-06TZ/J20491-18-06TZ*SR16SC-06*600	Y	1	
38	4120001227	测压接头EM3/1/4ED	Y	1	
39	4120002540	直接头1B-06-08-2WD	Y	1	
40	4120703816	软管J20411-14-04TZ*SCP3-04*1860	Y	1	
41	4120703817	软管J20411-14-04TZ*SCP3-04*2050	Y	1	
42	4110002071	减速机总成7HB001F0B30057	Y	2	
43	4014010078	螺钉5/8-11UNF-2B*1.5"-10.9	Y	12	
44	4015000181	垫圈GB97.1-16EpZn-300HV	Y	12	

齿轮泵A101098620    Pump



序号 Key	零件代号 Part No.	名称 Description	是否配件 Spare parts Y/N	数量 Qty	备注 Remarks
1	4120001431005	孔用弹性挡圈P03700013	Y	1	
2	4120001431002	油封P01200050	Y	1	
3	4120001431006	前盖A012010236	Y	1	
4	4120001431003	外密封圈P01010072	Y	2	
5	4120001431007	轴套总成(无倒角)A012460054	Y	2	
6	4120001431008	定位销P03420002	Y	2	
7	4120001488001	单泵体A012107630	Y	1	
8	4120001488002	六角头螺栓P03100114	Y	4	
9	4120001488003	鞍形弹性垫圈P03610032	Y	4	
10	4120001488004	后盖A012020121	Y	1	
11	4120001431004	E型挡圈P01100025	Y	2	
12	4120001431013	E型密封圈P01020077	Y	2	
13	4120001488005	从动齿轮A012300223	Y	1	
14	4120001488006	主动齿轮A012203638	Y	1	

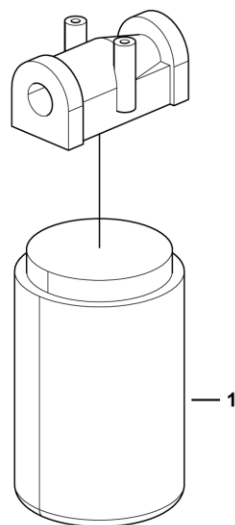
剪叉平台控制阀ST4830-AC00    Valve manifold



L2300-4120703335

序号 Key	零件代号 Part No.	名称 Description	是否配件 Spare parts Y/N	数量 Qty	备注 Remarks
1	4120703335001	阀块ST4629-A000M	Valve st4629-a000m	Y	1
2	4120703335002	溢流阀RVS0.S10.0W.250	Valve rvs0.s10.0w.250	Y	1
3	4120703335003	开关电磁阀SV10-34-0-N-0	Valve sv10-34-0-n-0	Y	1
4	4120001490002	溢流阀STRV08-G-240A	Valve strv08-g-240a	N	2
5	4120703639019	M6阻尼STTY002-0.8	Damping stty002-0.8	Y	1
6	4120002007001	电磁阀阀芯SV38-38-0-N-0	Valve	Y	3
7	4120002602005	电磁阀SV08-30-0-N-0	Valve sv08-30-0-n-0	Y	1
8	4120703335004	节流阀FR08-20F-0-N/M3.8	Fr08-20f-0-n/m3.8	Y	1
9	4120001490007	单向阀STCV08-0-000A	Valve stcv08-0-000a	N	3
10	4120705239	流量阀FR10-20F-0-N/M7.6	Flow valve	Y	1
11	4120703639007	电磁阀SV08-58C-0-N-0	Valve sv08-58c-0-n-0	Y	1
12	4120703335005	双向溢流阀CR08-38A-0-N-30	Valve cr08-38a-0-n-30	Y	1
13	4120001159014	线圈4303624	Coil	Y	3
14	4120001159015	线圈4303724	Coil	Y	4
15	4190001419	堵头4BN-04WD	Plug	Y	25
16	4129900116002	4BN-02WD	4bn-02wd	Y	3

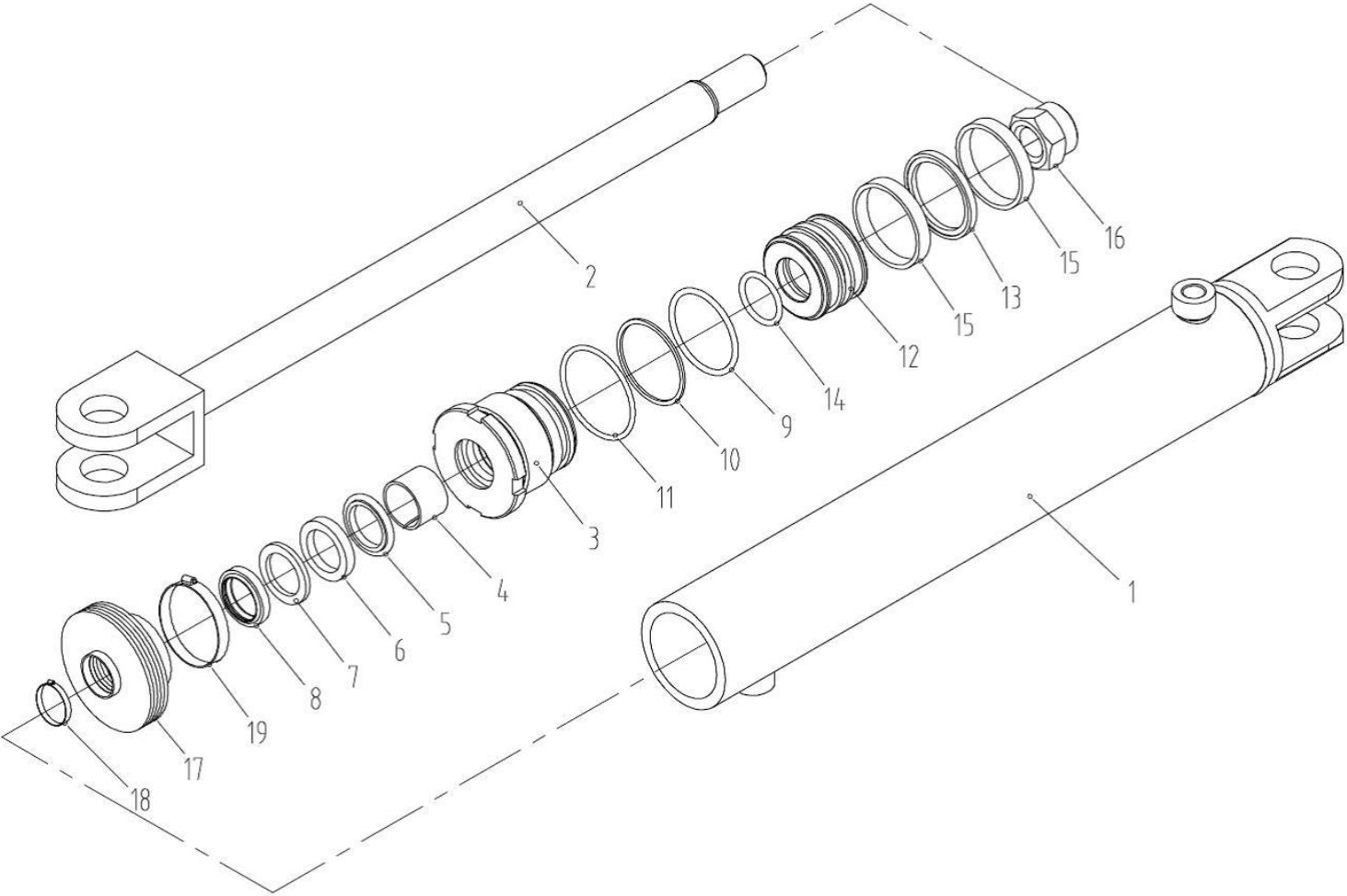
过滤器SP-06×10 Filter



L2300-4120001128

[illegible]

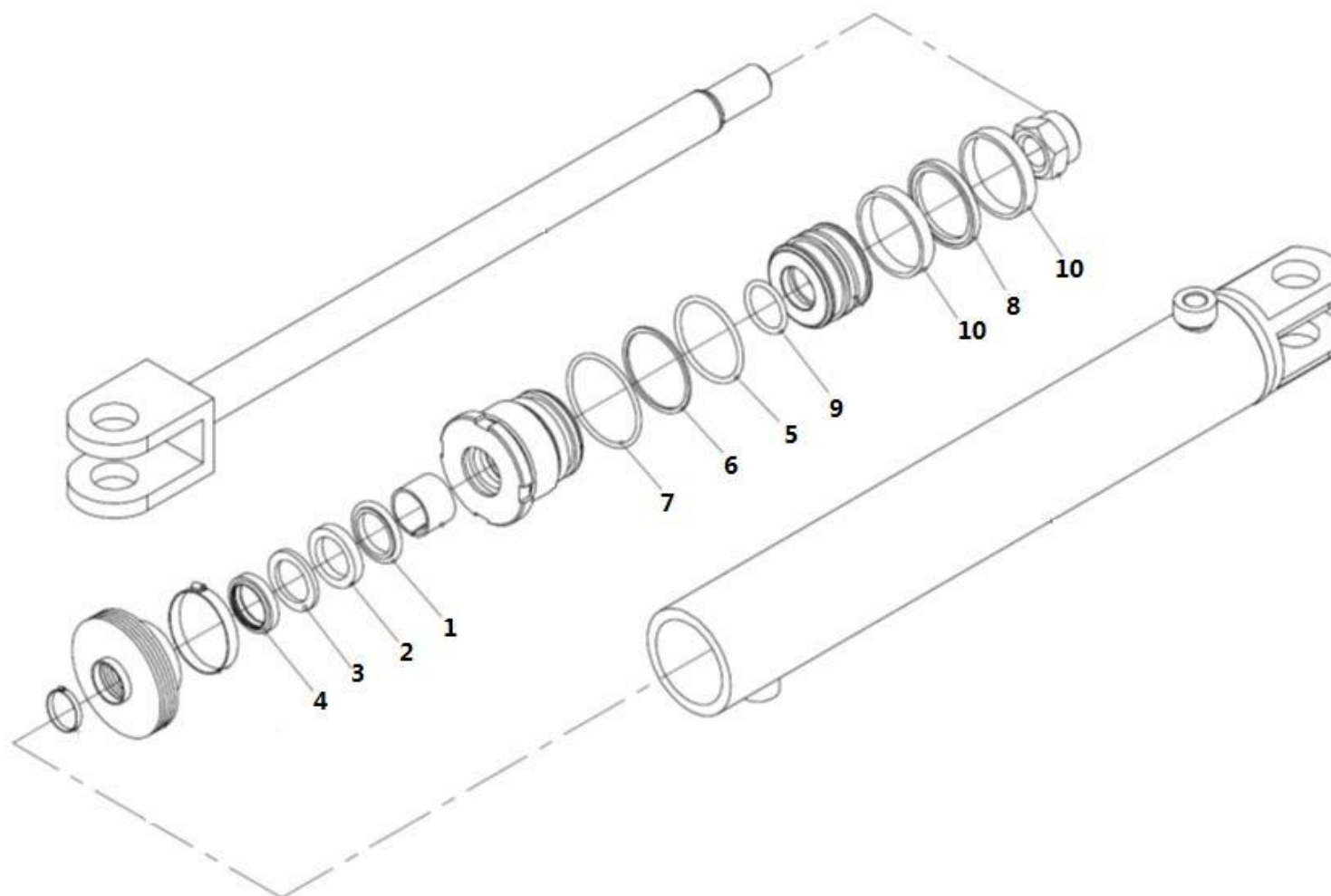
转向油缸50\*25\*244-530   Cylinder





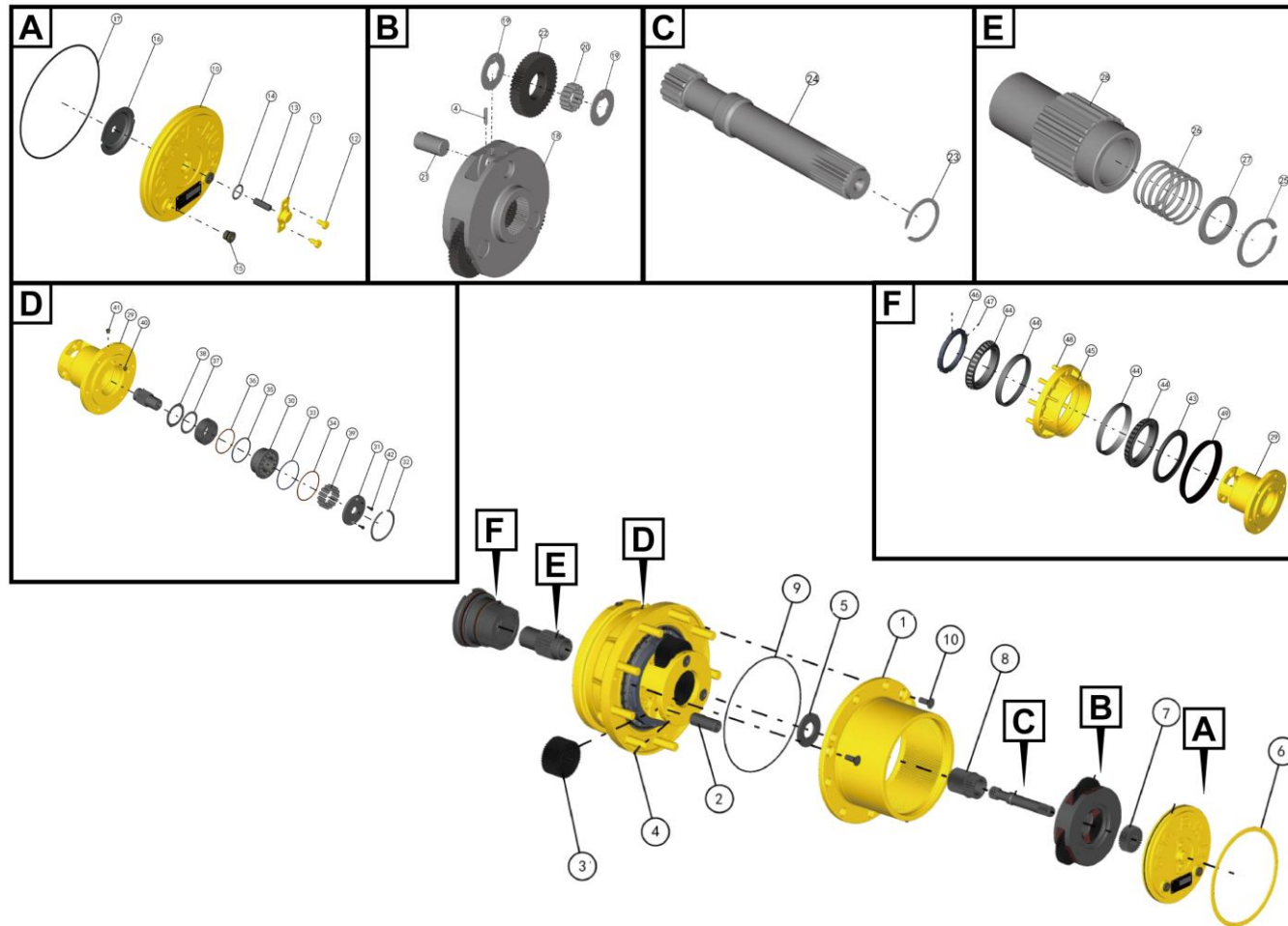
序号 Key	零件代号 Part No.	名称 Description	是否配件 Spare parts Y/N	数量 Qty	备注 Remarks
1	4120002495019	缸筒总成24A332000	Cylinder assembly	Y	1
2	4120002495020	活塞杆总成24A311200	Piston body assembly	Y	1
3	4120002495021	缸盖24A370210	Cylinder cover	Y	1
4	4120002047011	衬套24S225201	Bushing	Y	1
5	4120002047014	斯特封24F902501	Seal	Y	1
6	4120706355001	密封件-活塞杆24F202503	Seal 24f202503	Y	1
7	4120002047016	挡圈-U形圈24E00251C	U-washer	Y	1
8	4120706355002	密封件-防尘24D50251J	Seal 24d50251j	Y	1
9	4120002047018	O形圈24K10450A	O-ring	Y	1
10	4120002047019	挡圈-O形圈24M10500C	O-ring	Y	1
11	4120002047020	O形圈24K305011	O-ring	Y	1
12	4120002495022	活塞24A380260	Piston	Y	1
13	4120002047022	密封件-活塞24P205002	Seal	Y	1
14	4120002047021	O形圈24K10250A	O-ring	Y	1
15	4120002495018	支承环24G205015	Ring	Y	2
16	4120002047013	螺母-尼龙401800093	Nut	Y	1
17	4120706354004	护套24W720220	Rubber sleeve	N	1
18	4120706354002	喉箍401400010	Clamp	N	1
19	4120706354003	喉箍401400007	Clamp	N	1

油缸密封件包24A300301S Cylinder seal kit



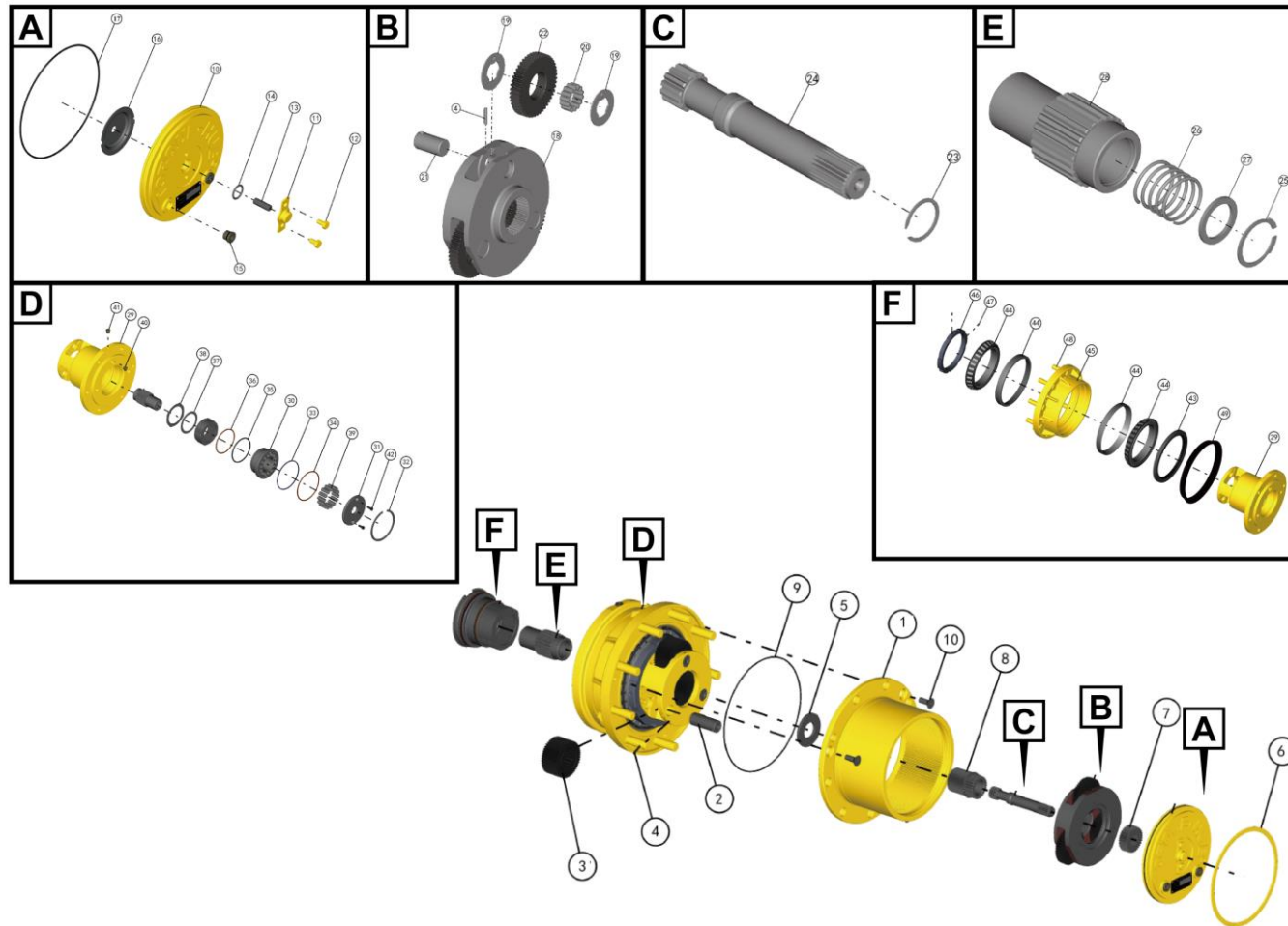
序号 Key	零件代号 Part No.	名称 Description	是否配件 Spare parts Y/N	数量 Qty	备注 Remarks
1	4120002047014	斯特封24F902501	Seal	Y	1
2	4120706355001	密封件-活塞杆24F202503	Seal 24f202503	Y	1
3	4120002047016	挡圈-U形圈24E00251C	U-washer	Y	1
4	4120706355002	密封件-防尘24D50251J	Seal 24d50251j	Y	1
5	4120002047018	O形圈24K10450A	O-ring	Y	1
6	4120002047019	挡圈-O形圈24M10500C	O-ring	Y	1
7	4120002047020	O形圈24K305011	O-ring	Y	1
8	4120002047022	密封件-活塞24P205002	Seal	Y	1
9	4120002047021	O形圈24K10250A	O-ring	Y	1
10	4120002495018	支承环24G205015	Ring	Y	2

减速机总成7HB001F0B30057 Wheel drive



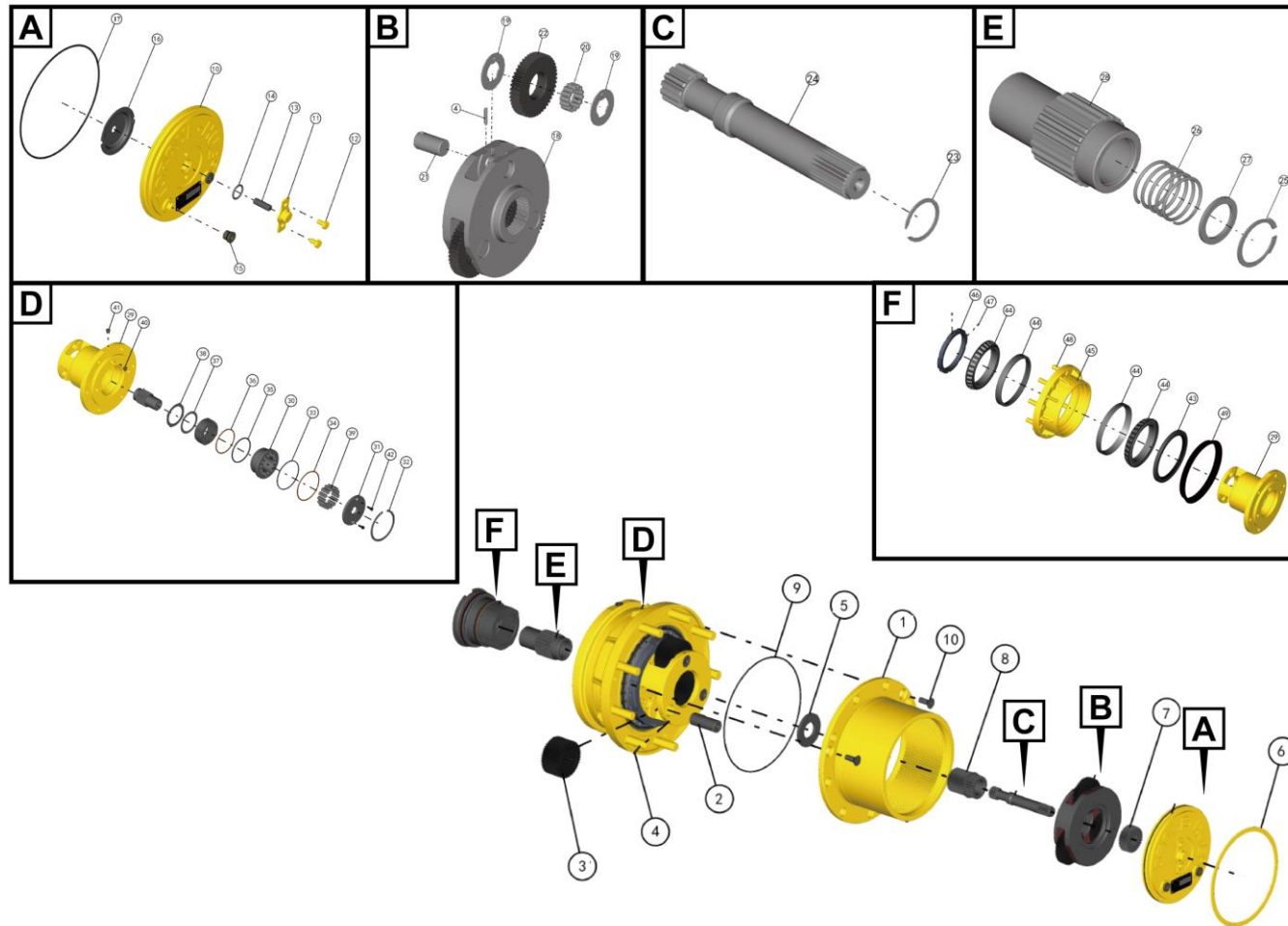
序号 Key	零件代号 Part No.	名称 Description	是否配件 Spare parts Y/N	数量 Qty	备注 Remarks
1	4110002071001	轮架7HB001F0B30057-1E	Y	1	
2	4110002071002	行星轴7HB001F0B30057-4E	Y	3	
3	4110002071003	行星齿轮7HB001F0B30057-4F	Y	3	
4	4110002071004	销7HB001F0B30057-4G	Y	3	
5	4110002071005	挡圈7HB001F0B30057-6G	Y	1	
6	4110002071006	太阳轮7HB001F0B30057-10	Y	1	
7	4110002071007	太阳轮7HB001F0B30057-11	Y	1	
8	4110002071008	O型圈7HB001F0B30057-18	Y	1	
9	4110002071009	螺栓7HB001F0B30057-19	Y	3	
10	4110002071010	盖7HB001F0B30057-6A	Y	1	
11	4110002071011	分离盖7HB001F0B30057-6B	Y	1	
12	4110002071012	螺栓7HB001F0B30057-6C	Y	2	
13	4110002071013	销7HB001F0B30057-6D	Y	1	
14	4110002071014	O型圈7HB001F0B30057-6E	Y	1	
15	4110002071015	螺塞7HB001F0B30057-6F	Y	2	
16	4110002071016	止退隔环7HB001F0B30057-2	Y	1	
17	4110002071017	O型圈7HB001F0B30057-17	Y	1	
18	4110002071018	支架7HB001F0B30057-3A	Y	1	
19	4110002071019	止推垫圈7HB001F0B30057-3B	Y	6	
20	4110002071020	滚针轴承7HB001F0B30057-3C	Y	42	
21	4110002071021	行星轴7HB001F0B30057-3E	Y	3	
22	4110002071022	行星齿轮7HB001F0B30057-3F	Y	3	

减速机总成7HB001F0B30057 Wheel drive



序号 Key	零件代号 Part No.	名称 Description	是否配件 Spare parts Y/N	数量 Qty	备注 Remarks
23	4110002071023	挡圈7HB001F0B30057-5	Retaining ring – ext .875	Y	1
24	4110002071024	输入轴7HB001F0B30057-9	Input shaft	Y	1
25	4110002071025	挡圈7HB001F0B30057-1K	Retaining ring – int 1.250	Y	1
26	4110002071026	弹簧7HB001F0B30057-1L	Spring (1.225,1.500)	Y	1
27	4110002071027	止推垫圈7HB001F0B30057-1M	Thrust washer	Y	1
28	4110002071028	接头7HB001F0B30057-7	Coupling	Y	1
29	4110002071029	转向节7HB001F0B30057-1A	Spindle	Y	1
30	4110002071030	制动活塞7HB001F0B30057-8A	Brake piston	Y	1
31	4110002071031	压板7HB001F0B30057-8B	Pressure plate	Y	1
32	4110002071032	挡圈7HB001F0B30057-8C	Retaining ring – int 4.000	Y	1
33	4110002071033	O型圈7HB001F0B30057-8D	O-ring	Y	1
34	4110002071034	支承环7HB001F0B30057-8E	Back-up ring	Y	1
35	4110002071035	O型圈7HB001F0B30057-8F	O-ring	Y	1
36	4110002071036	支承环7HB001F0B30057-8H	Back-up ring	Y	1
37	4110002071037	制动齿轮7HB001F0B30057-8J	Brake rotor	Y	8
38	4110002071038	制动定子7HB001F0B30057-8K	Brake stator	Y	9
39	4110002071039	弹簧7HB001F0B30057-8L	Spring, h.d.(.492,1.260)	Y	1
40	4110002071040	O型圈&螺塞组件7HB001F0B30057-12	O-ring plug or plastic plug	Y	1
41	4110002071041	O型螺塞7HB001F0B30057-21	O-ring plug	Y	1
42	4110002071042	圆柱头螺柱7HB001F0B30057-22	Socket head cap screws	Y	2
43	4110002071043	密封圈7HB001F0B30057-1B	Lip seal	Y	1
44	4110002071044	锥形轴承7HB001F0B30057-1C	Tapered bearing assembly	Y	2

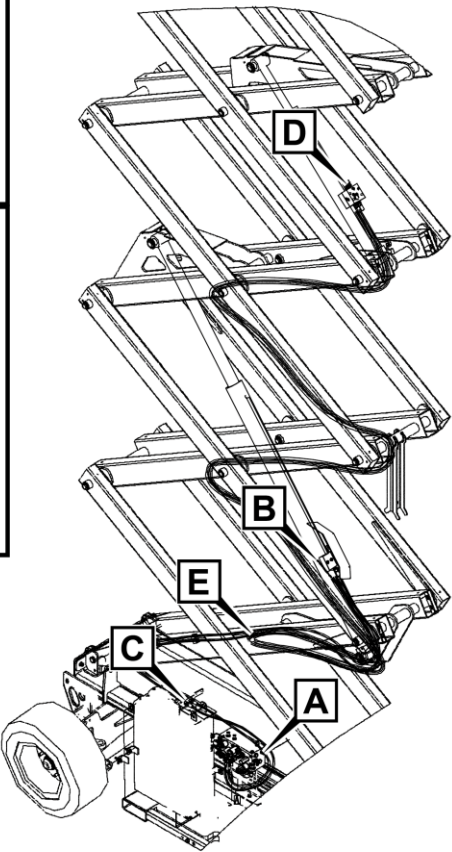
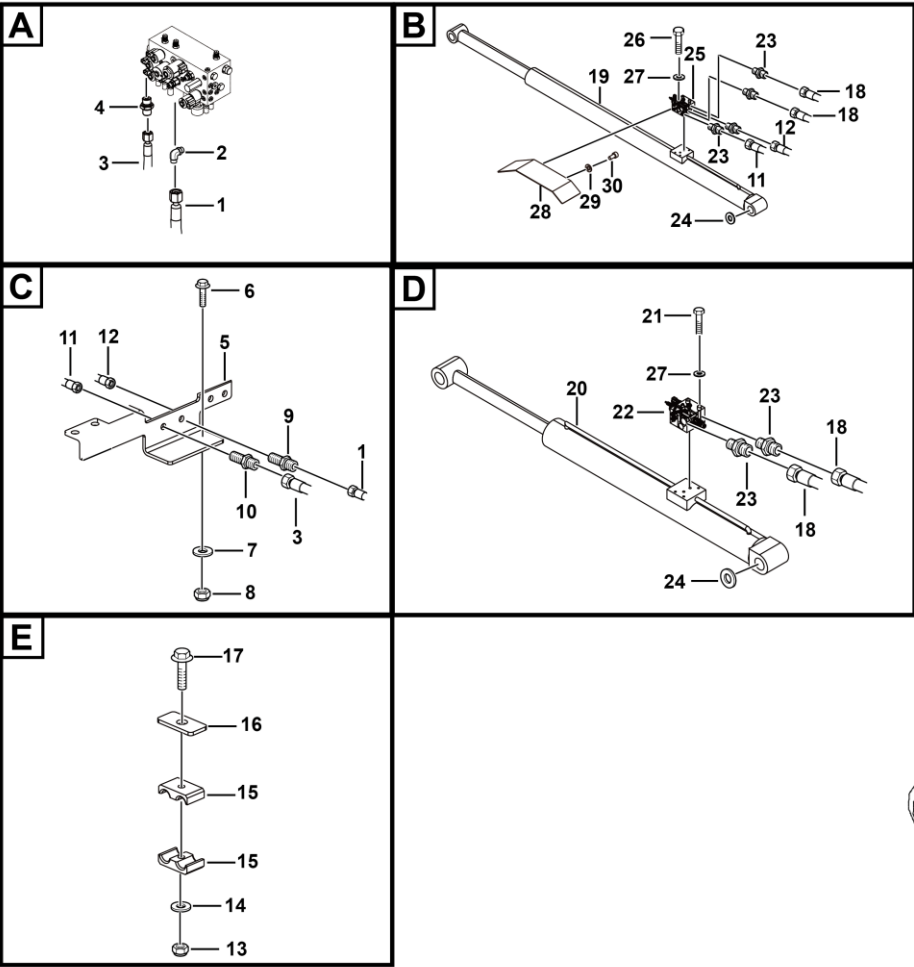
减速机总成7HB001F0B30057 Wheel drive







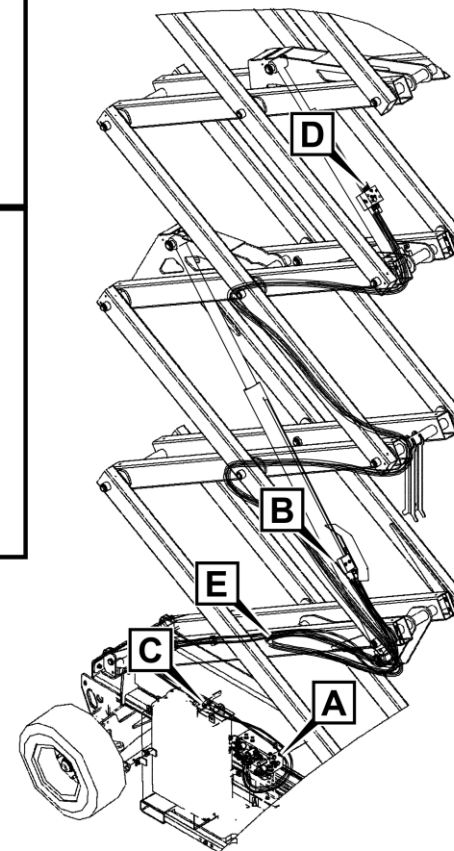
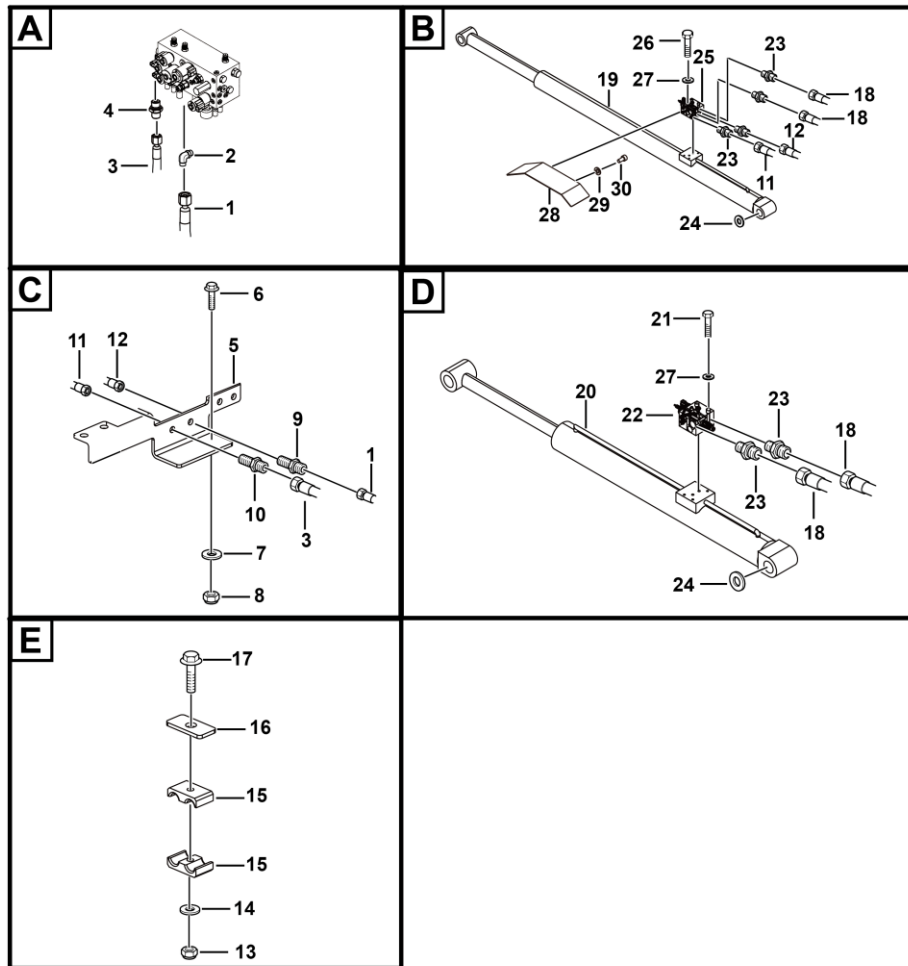
举升液压总成    Lifting hydraulic system



L2400-2508000595.S

序号 Key	零件代号 Part No.	名称 Description	是否配件 Spare parts Y/N	数量 Qty	备注 Remarks
1	4120705695	软管F481CACA121005-1480	Pipe f481caca121005-1480	Y	1
2	4129900314	接头EW12LOMDA3C	Nipple	Y	1
3	4120705696	软管FC402CACA121206-1480	Pipe fc402caca121206-1480	Y	1
4	4120001224	接头GE12LREDOMDCF	Jiont	Y	1
5	25080001461	喇叭安装板	Plate	Y	1
6	4011010706	螺栓GB5783-M10*40flZnyc-8.8-480	Boltgb5783-m10*40flznyc-8.8-480	Y	2
7	4015010339	垫圈GB97.1-10flZnyc-300HV-480	Washer	Y	2
8	4013010290	螺母GB6170-M10flZnyc-8-480	Nutgb6170-m8flznyc-8-480	Y	2
9	4120705697	直通过板接头SV10LOMDCF	Joint	Y	1
10	4120704914	直通隔板接SV12LOMDCF	Jiont	Y	1
11	4120705698	软管FC402CACA121005-3700	Pipe fc402caca121005-3700	Y	1
12	4120705699	软管F481CACA101005-3700	Pipe f481caca101005-3700	Y	1
13	4013010297	螺母GB889.1-M8flZnyc-8-480	Nutgb889.1-m8flznyc-8-480	Y	3
14	4015010280	垫圈GB97.1-8flZnyc-480	Washergb97.1-10flznyc-480	Y	3
15	25080002611	管夹	Clamp	Y	6
16	25080003981	压板	Plate	Y	3
17	4011011050	螺栓GB12-M8*45flZnyc-8.8-480	Bolt	Y	3
18	4120705976	软管FC402CACA101005-10000	Pipe fc402caca101005-10000	Y	2
19	4120704494	下举升油缸76.2*88.9*1555*1914	Down lift cylinder	Y	1
20	4120704496	上举升油缸76.2*88.9*493*1100	Up lift cylinder	Y	1
21	4014010232	螺栓GB5782-M8*70flZnyc-12.9-480	Bolt gb5782-m8*70flznyc-12.9-480	Y	4
22	4120705691	上部油缸阀块ST5243-AC00	Valve st5243-ac00	Y	1

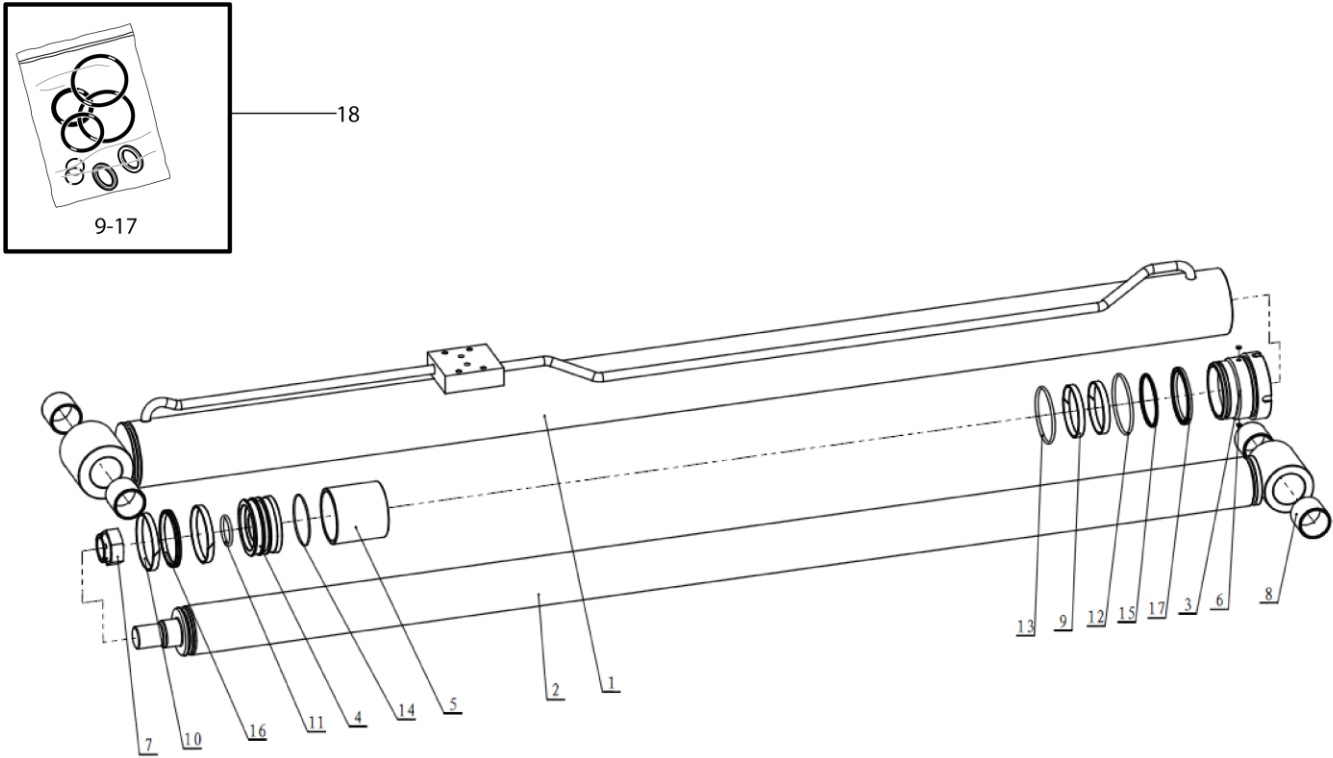
举升液压总成 Lifting hydraulic system



L2400-2508000595.S

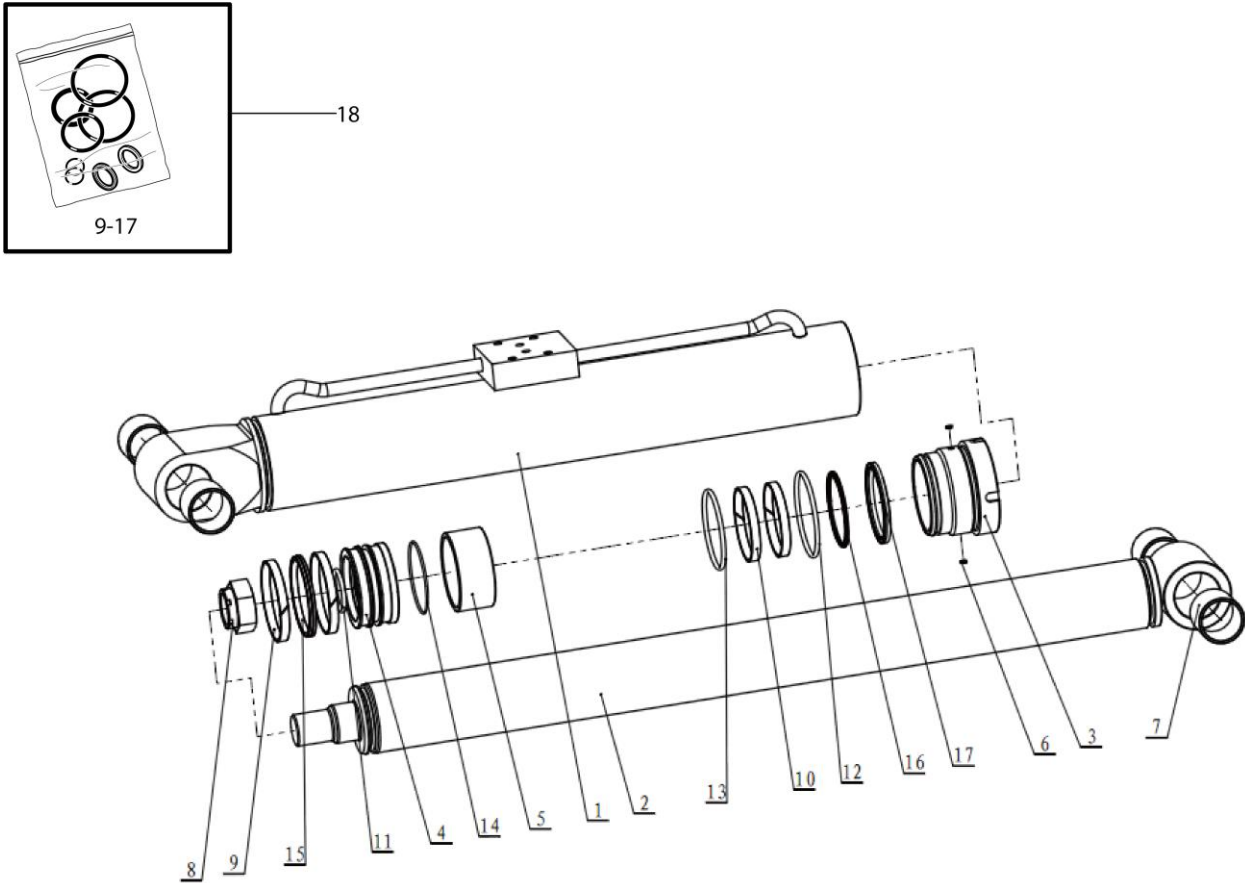
序号 Key	零件代号 Part No.	名称 Description	是否配件 Spare parts Y/N	数量 Qty	备注 Remarks
23	4120001165	接头GE10LR3/8EDOMDCF	Jiont	Y	6
24	25080002761	垫圈	Washer	Y	8
25	4120705692	下部油缸阀块ST5242-AC00	Valve st5242-ac00	Y	1
26	4011010821	螺栓GB5782-M8*80flZnyc-12.9-480	Bolt gb5782-m8*80flznyc-12.9-480	Y	4
27	25080002881	M8硬垫片	M8 nut	Y	8
28	25080005512	阀块保护板	Plate	Y	1
29	4015010284	垫圈GB97.1-6flZnyc-480	Washer	Y	4
30	4014010181	螺钉GB70.1-M6*12flZnyc-8.8-480	Screw gb70.1-m6*25flznyc-8.8-480	Y	4

举升油缸    Cylinder



序号 Key	零件代号 Part No.	名称 Description	是否配件 Spare parts Y/N	数量 Qty	备注 Remarks
1	4120704494005	缸筒组件160210E205	Cylinder assembly	Y	1
2	4120704494006	空心活塞杆组件160713C200	Piston rod assembly	Y	1
3	4120703585003	导向套161413A500	Guide sleeve	Y	1
4	4120703585004	活塞161110A501	Piston	Y	1
5	4120704494007	限位套 165313B205	Sleeve	Y	1
6	4120703766018	锁紧片166301A100	Lock plat	Y	2
7	4120703584019	全金属锁紧螺母264768T001	All netal locking nut	N	1
8	4120704494008	自润滑复合轴承272199C047	Bearing	Y	4
9	4120704503008	轴用支承环290505W025	290505w025	Y	2
10	4120704503009	孔用支承环290505W026	290505w026	Y	2
11	4120703585005	O形圈280703A008	O-ring	Y	1
12	4120703585006	O形圈280703A022	O-ring	Y	1
13	4120702862004	O形圈280703A017	O-ring	Y	1
14	4120704503005	O形圈280701A012	280701a012	Y	1
15	4120704503007	星形圈280901A004	280901a004	Y	1
16	4120703585014	活塞动密封280219E006	Seal ring	Y	1
17	4120704503006	防尘圈280402B049	280402b049	Y	1
18	4120704494004	举升油缸密封件包031013B206-SK01-益诚	Seal package	Y	1

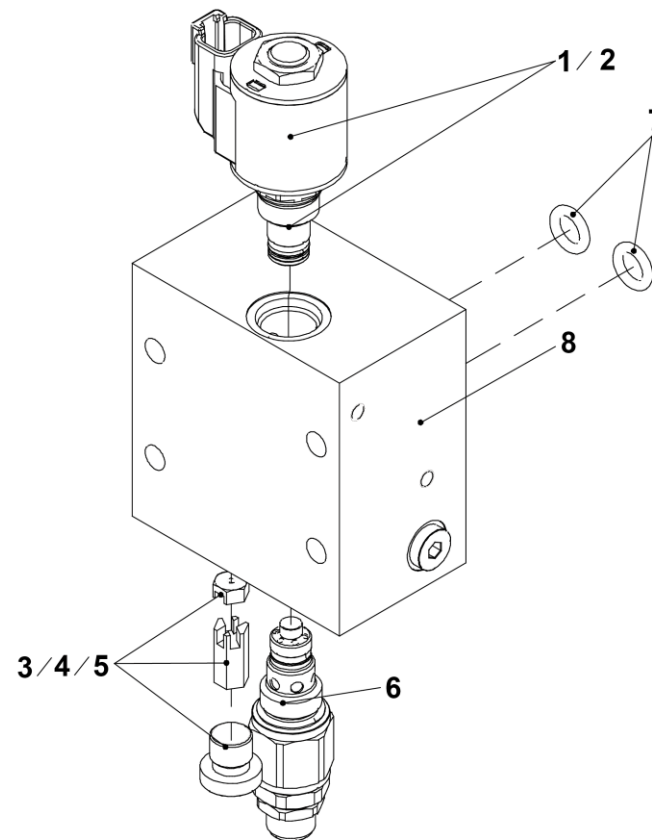
举升油缸    Cylinder





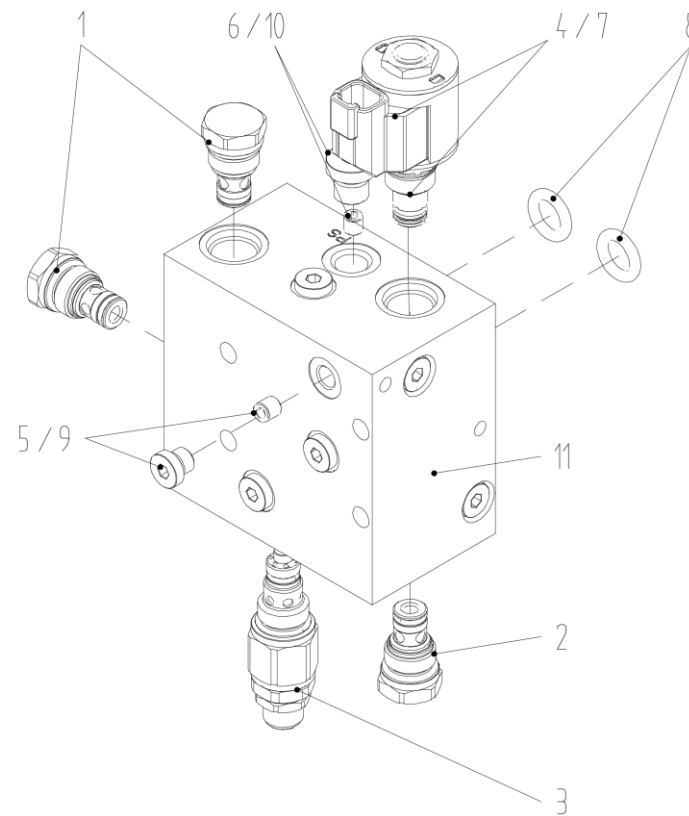
序号 Key	零件代号 Part No.	名称 Description	是否配件 Spare parts Y/N	数量 Qty	备注 Remarks
1	4120704496003	缸筒组件160210E206	Cylinder assembly	Y	1
2	4120704496004	空心活塞杆组件160713C201	Piston rod assembly	Y	1
3	4120703585003	导向套161413A500	Guide sleeve	Y	1
4	4120703585004	活塞161110A501	Piston	Y	1
5	4120704496005	限位套165313B206	Sleeve	Y	1
6	4120703766018	锁紧片166301A100	Lock plat	Y	2
7	4120704494008	自润滑复合轴承272199C047	Bearing	Y	4
8	4120703584019	全金属锁紧螺母264768T001	All metal locking nut	N	1
9	4120704503009	孔用支承环290505W026	290505w026	Y	2
10	4120704503008	轴用支承环290505W025	290505w025	Y	2
11	4120703585005	O形圈280703A008	O-ring	Y	1
12	4120703585006	O形圈280703A022	O-ring	Y	1
13	4120702862004	O形圈280703A017	O-ring	Y	1
14	4120704503005	O形圈280701A012	280701a012	Y	1
15	4120703585014	活塞动密封280219E006	Seal ring	Y	1
16	4120704503007	星形圈280901A004	280901a004	Y	1
17	4120704503006	防尘圈280402B049	280402b049	Y	1
18	4120704496002	举升油缸密封件包031013B207-SK01-益诚	Seal package	Y	1

上部油缸阀块ST5243-AC00 Valve



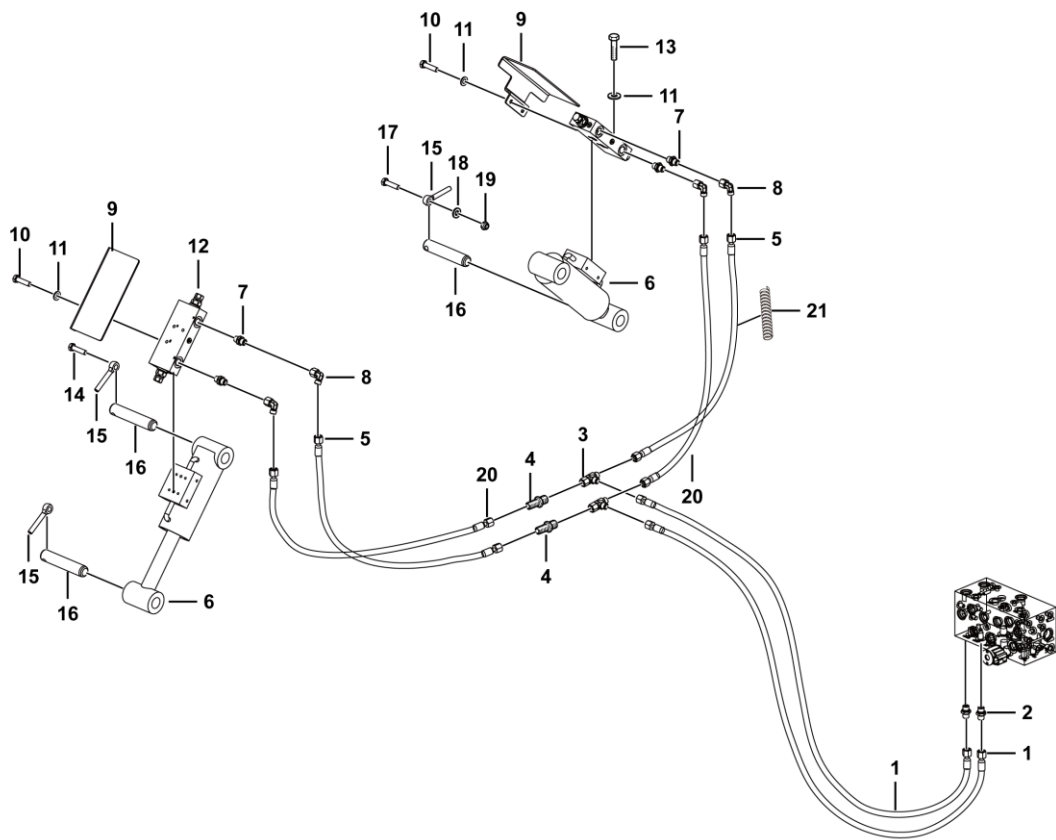
序号 Key	零件代号 Part No.	名称 Description	是否配件 Spare parts Y/N	数量 Qty	备注 Remarks
1	4120704028002	电磁阀SP08-20-0-N-0	Electromagnetic valve sp08-20-0-n-0	Y	1
2	4120001159014	线圈4303624	Coil	Y	1
3	4120705691002	阻尼STTY010-0.9	Damping	Y	1
4	4120704028005	阻尼片顶杆STTY038	Mandril stty038	Y	1
5	4190001419	堵头4BN-04WD	Plug	Y	1
6	4120001901001	溢流阀STRV08-B-120A	Relief valve	Y	1
7	4120703337003	O型圈 10.77*2.62 NBR 70SH	O-ring	Y	2
8	4120705691001	阀块ST5243-A000M	Valve	Y	1

下部油缸阀块ST5242-AC00 Valve





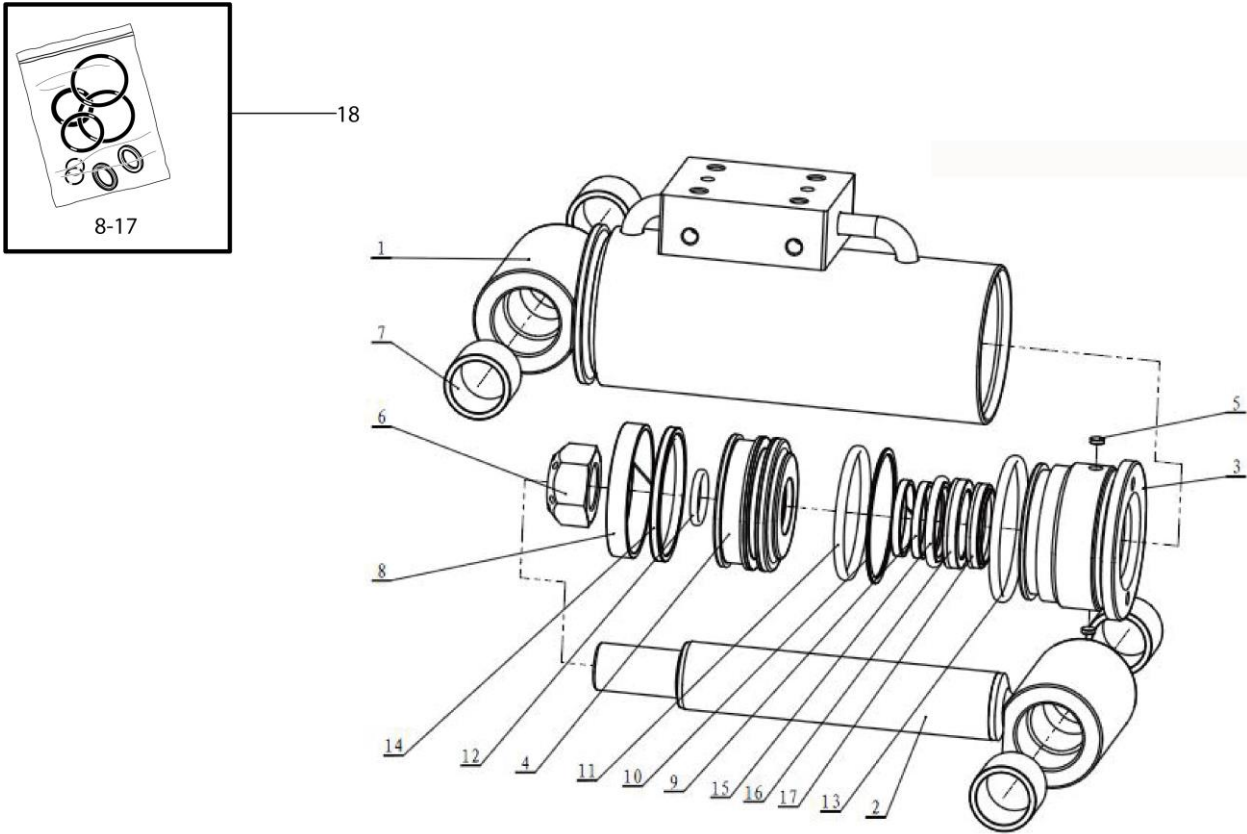
车桥摆动液压总成    Oscillate system



L2600-2511000012.S1a

序号 Key	零件代号 Part No.	名称 Description	是否配件 Spare parts Y/N	数量 Qty	备注 Remarks
1	4120002589	软管J20411-14-04TZ*SCP3-04*2000	Pipe	Y	2
2	4120001368	直通接头1CB-14-04WD	Joint 1cb-14-04wd	Y	2
3	4190001020	三通接头CC-14	Nipple	Y	2
4	4120001813	直通过板接头6C-14LN	Jiont	Y	2
5	4120002591	软管J20411-14-04TZ*SCP3-04*700	Pipe	Y	2
6	4120002494	浮动油缸	Oscillate cylinder	Y	2
7	4120001495	直通接头1CB-14-06WD	Joint 1cb-14-06wd	Y	4
8	4120000868	直角接头2C9-14Z	Rectangular connector	Y	4
9	25110000141	浮动阀安装板	Plate	Y	2
10	4011000180	螺栓GB5783-M8*12EpZn-8.8	Bolt gb5783-m8*12epzn-8.8	Y	4
11	4015000072	垫圈GB97.1-8EpZn-300HV	Washer gb97.1-8epzn-300hv	Y	12
12	4120002534	浮动平衡阀ST8107-A000	Valve	Y	2
13	4011010704	螺栓GB5783-M8*45EpZn-10.9	Bolt	Y	8
14	4011000082	螺栓GB5783-M10*25EpZn-8.8	Bolt gb5783-m10*25epzn-8.8	Y	2
15	25200006221	插销	Pin	Y	4
16	25110000151	轴	Pin	Y	4
17	4011000184	螺栓GB5783-M10*40EpZn-8.8	Bolt gb5783-m10*40epzn-8.8	Y	2
18	4015000152	垫圈GB97.1-10EpZn-300HV	Washer	Y	2
19	4013000189	螺母GB889.1-M10EpZn-8	Nut	Y	2
20	4120703827	软管J20411-14-04TZ*SCP3-04*660	Pipej20411-14-04tz*scp3-04*660	Y	2
21	4120001986	软管护套PG-050 (300)	Sleeve	Y	4

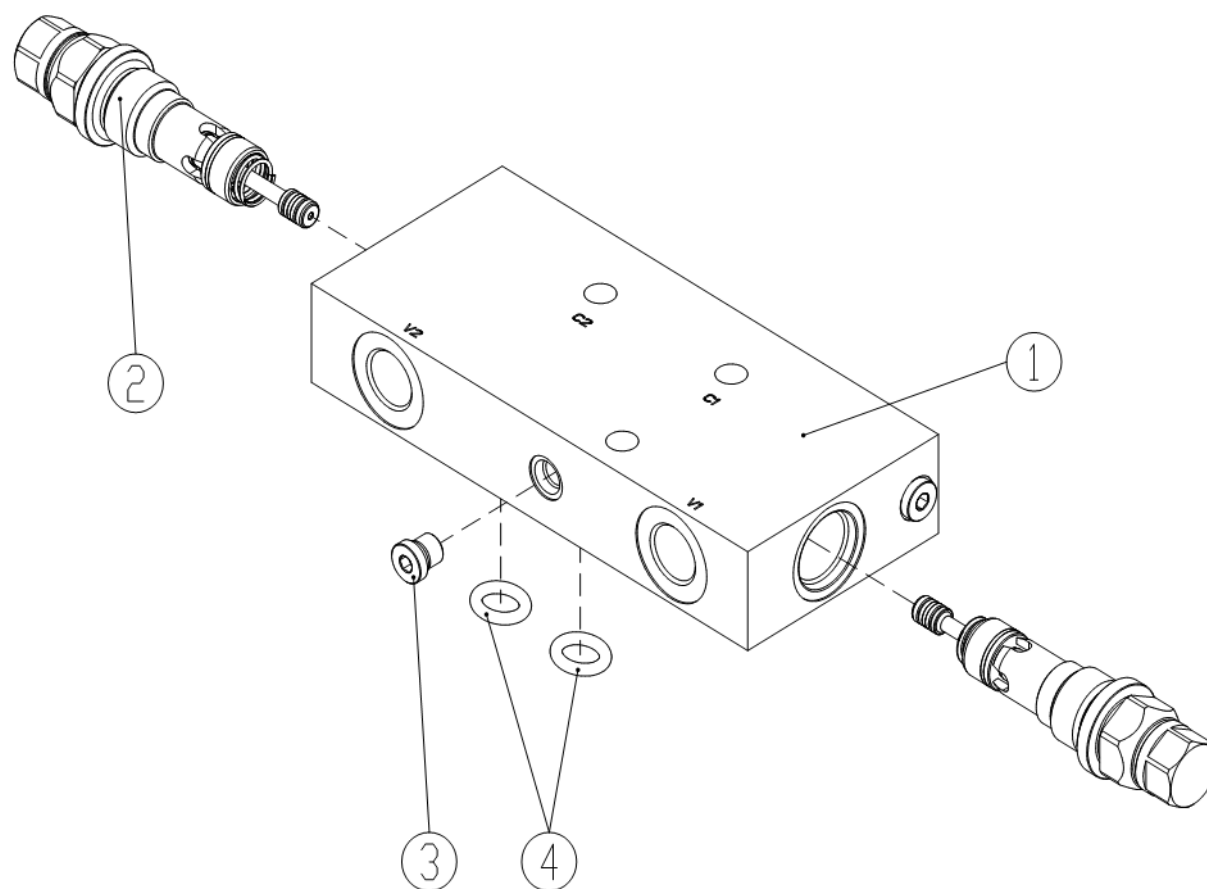
浮动油缸    Cylinder





序号 Key	零件代号 Part No.	名称 Description	是否配件 Spare parts Y/N	数量 Qty	备注 Remarks
1	4120002494002	缸筒组件170209E300	Cylinder assembly	Y	1
2	4120002494003	活塞杆组件 170510C300	Piston rod assembly	Y	1
3	4120002494004	导向套171410A301	Sleeve	Y	1
4	4120002494005	活塞171109A301	Piston	Y	1
5	4120703766018	锁紧片166301A100	Lock plat	Y	2
6	4120002047007	全金属锁紧螺母264761T001	Nut	Y	1
7	4120002494006	自润滑复合轴承 272103C004	Bearing	Y	4
8	4120001536003	支撑环280503T025	Ring	Y	1
9	4120002494007	轴用支承环290505T064	Ring	Y	2
10	4120704011004	挡圈280803F002	Ring-280803f002	Y	1
11	4120704011003	O形圈280703A011	O-ring 280703a011	Y	1
12	4120002494008	O形圈280702A007	O-ring	Y	1
13	4120703584007	O形圈280703A013	O-ring	N	1
14	4120002494009	格莱圈280203B039	Ring	Y	1
15	4120703561008	斯特封290109T005	Seal	Y	1
16	4120703561007	杆动密封280105B025	Seal	Y	1
17	4120703561009	防尘圈280402B026	Ring	Y	1
18	4120002494001	浮动油缸密封件维修包	Pack	Y	1

浮动平衡阀ST8107-A000 Valve





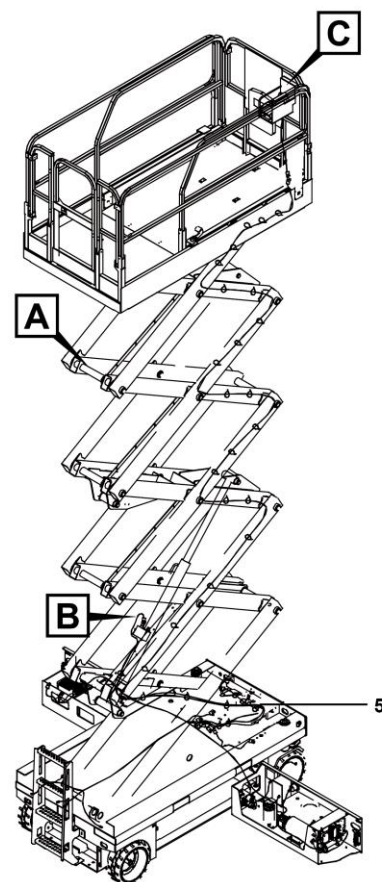
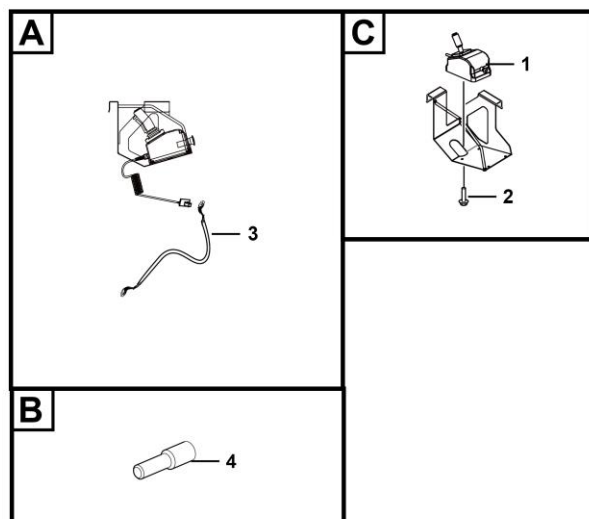


**M 电气系统**  
**ELECTRIC SYSTEM**

**临 工 集 团 济 南 重 机 有 限 公 司**

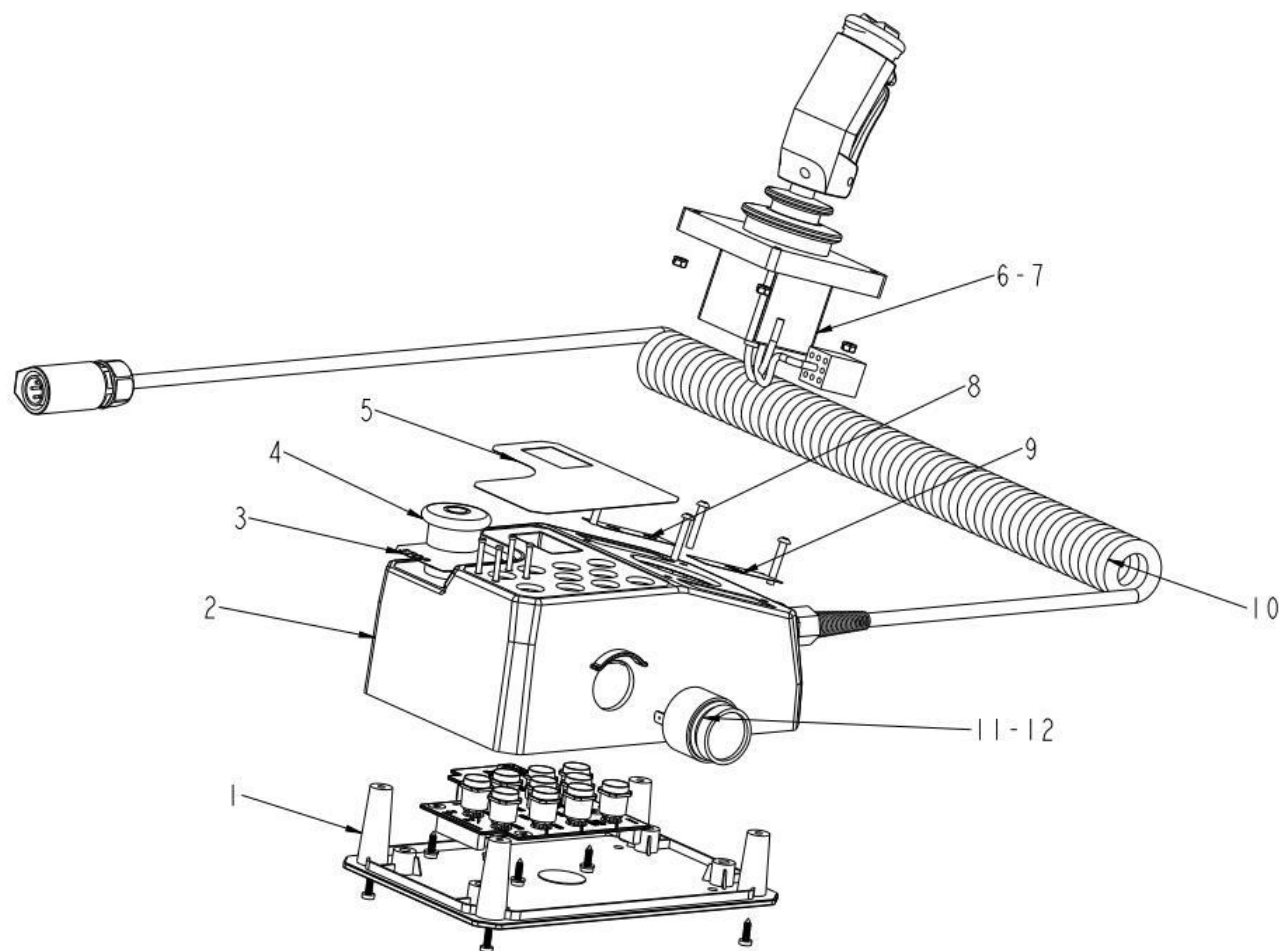
**LINGONG GROUP JINAN HEAVY MACHINERY CO., LTD.**

控制电气总成 Controller assembly





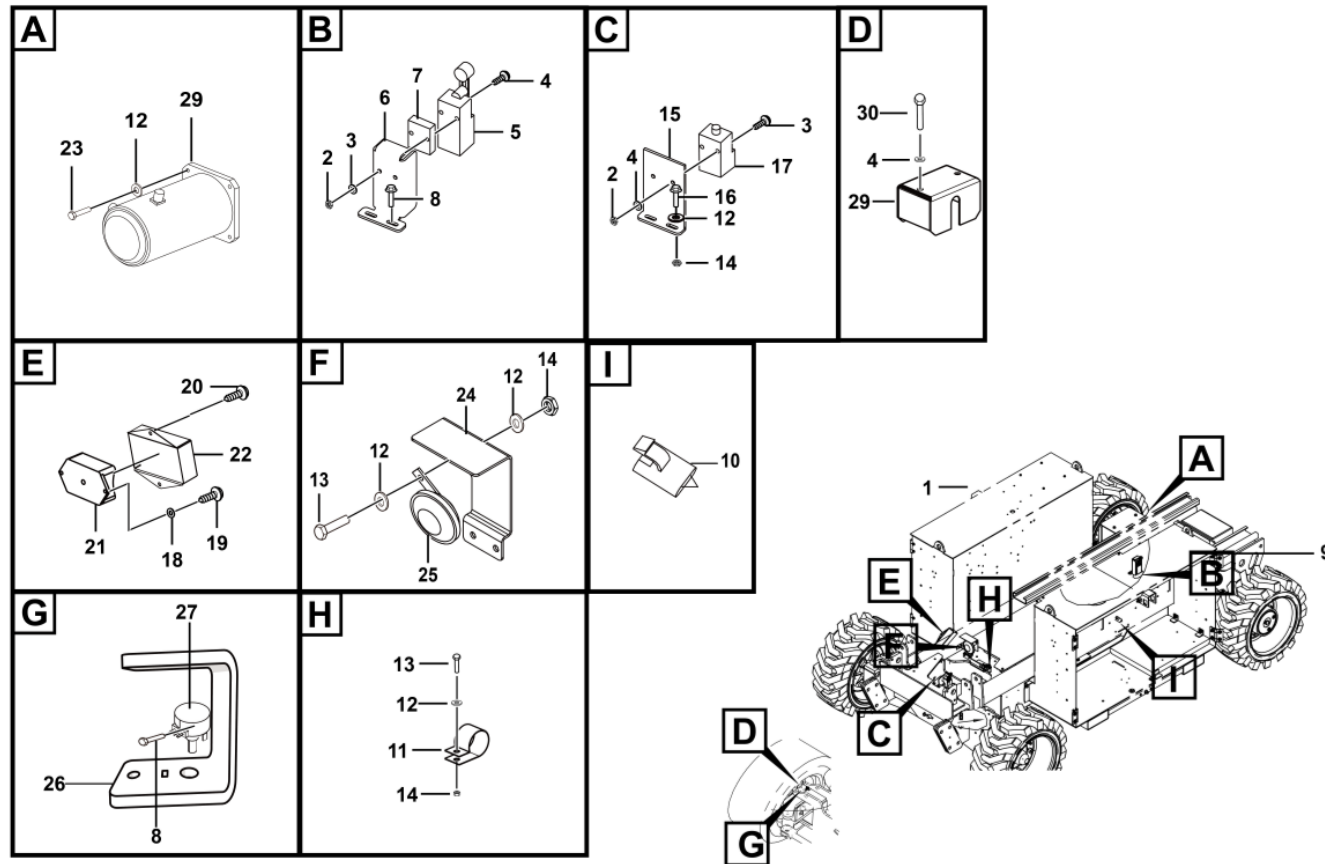
平台控制器Yosemite-PCU-V8 Platform controller





序号 Key	零件代号 Part No.	名称 Description	是否配件 Spare parts Y/N	数量 Qty	备注 Remarks
1	4130701751002	底盖20020107	Y	1	
2	4130701751001	壳体120020109	Y	1	
3	4130701751004	急停指示面板20020108	Y	1	
4	4130701751007	急停开关10420049	Y	1	
5	4130702319001	美标操作面板20020248	Y	1	
6	4130701751008	霍尔手柄10480012	Y	1	
7	4130701751011	手柄转接线束10470114	Y	1	
8	4130701751005	手柄前后指示标识20020091	Y	1	
9	4130701751006	手柄左右指示标识20020092	Y	1	
10	4130701751009	弹簧线束10470083	Y	1	
11	4130701636008	蜂鸣器10430003	Y	1	
12	4130001046015	蜂鸣器线束 10470100	N	1	

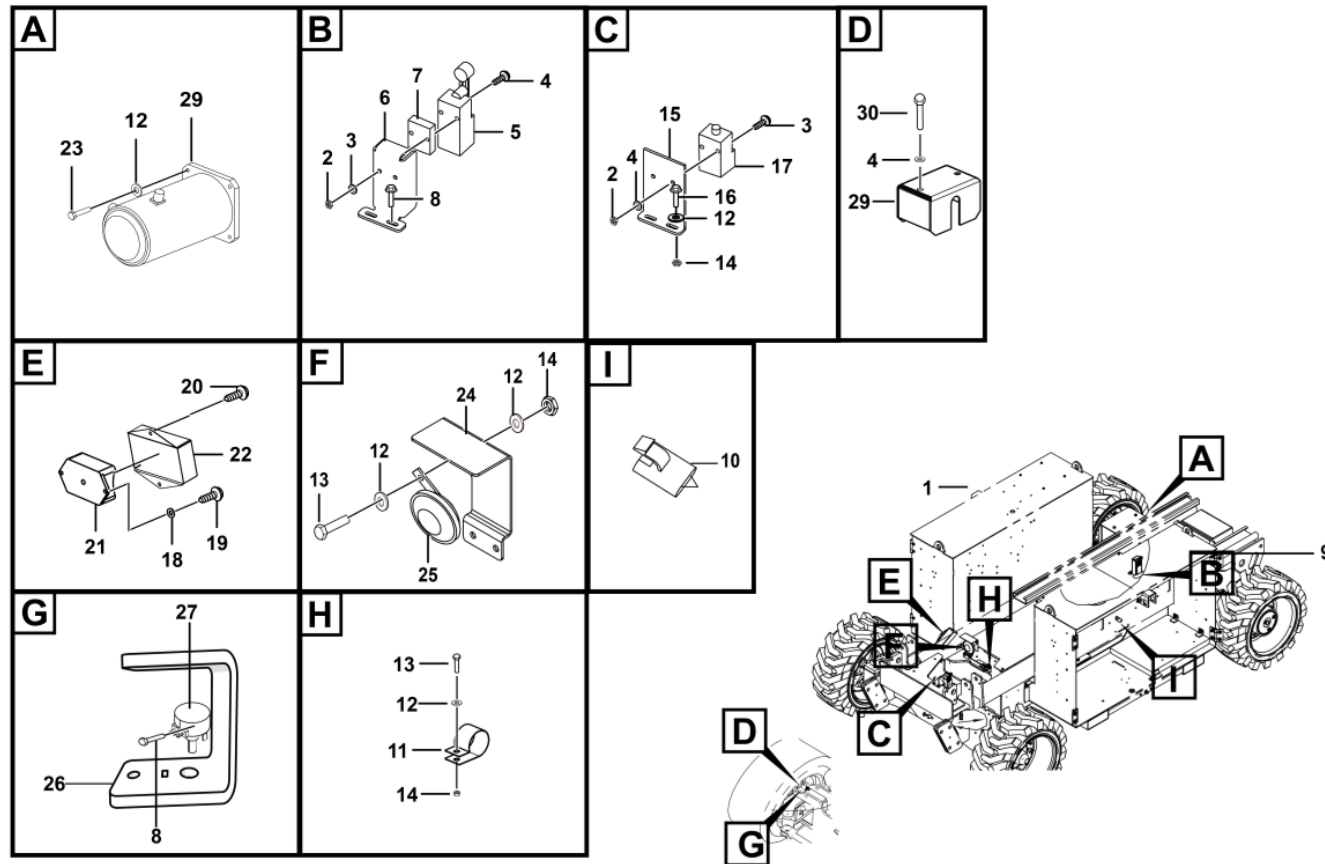
底盘电气 Chassis electric system



M3100-2532001531. S1b

序号 Key	零件代号 Part No.	名称 Description	是否配件 Spare parts Y/N	数量 Qty	备注 Remarks
1	25320015291	蓄电池侧电气系统	N	1	
2	4013010305	螺母GB889.1-M5flZnyc-8-480	Y	4	
3	4014010123	螺钉GB70.1-M5*40flZnyc-8.8-480	Y	4	
4	4015010283	垫圈GB97.1-5flZnyc-480	Y	12	
5	4130000835	行程开关XCKN2118P20C	Y	1	
6	25320004032	上限位开关固定板	Y	1	
7	25320009201	上限位开关垫板	Y	1	
8	4014010131	螺钉GB70.1-M5*16flZnyc-8.8-480	Y	4	
9	25320015281	油箱侧电气系统	N	1	
10	4130702364	接插件DTM04-12PA(橡胶塞盲堵)	Y	1	
11	26370001211	管夹	Y	1	
12	4015010280	垫圈GB97.1-8flZnyc-480	Y	18	
13	4011010966	螺栓GB16674-M8*20flZnyc-8.8-480	Y	4	
14	4013010291	螺母GB6170-M8flZnyc-8-480	Y	4	
15	25320016672	下限位支架焊接	Y	1	
16	4011010994	螺栓GB16674-M8*25flZnyc-8.8-480	N	2	
17	4130701637	行程开关	Y	1	
18	4015010290	垫圈GB97.1-4flZnyc-480	Y	4	
19	4014010124	螺钉GB818-M4*6flZnyc-4.8-480	Y	2	
20	4014010416	螺钉GB818-M4*10flZnyc-8.8-480	Y	2	
21	4130000734	角度传感器SYSA	Y	1	
22	25320000351	角度传感器护罩	Y	1	

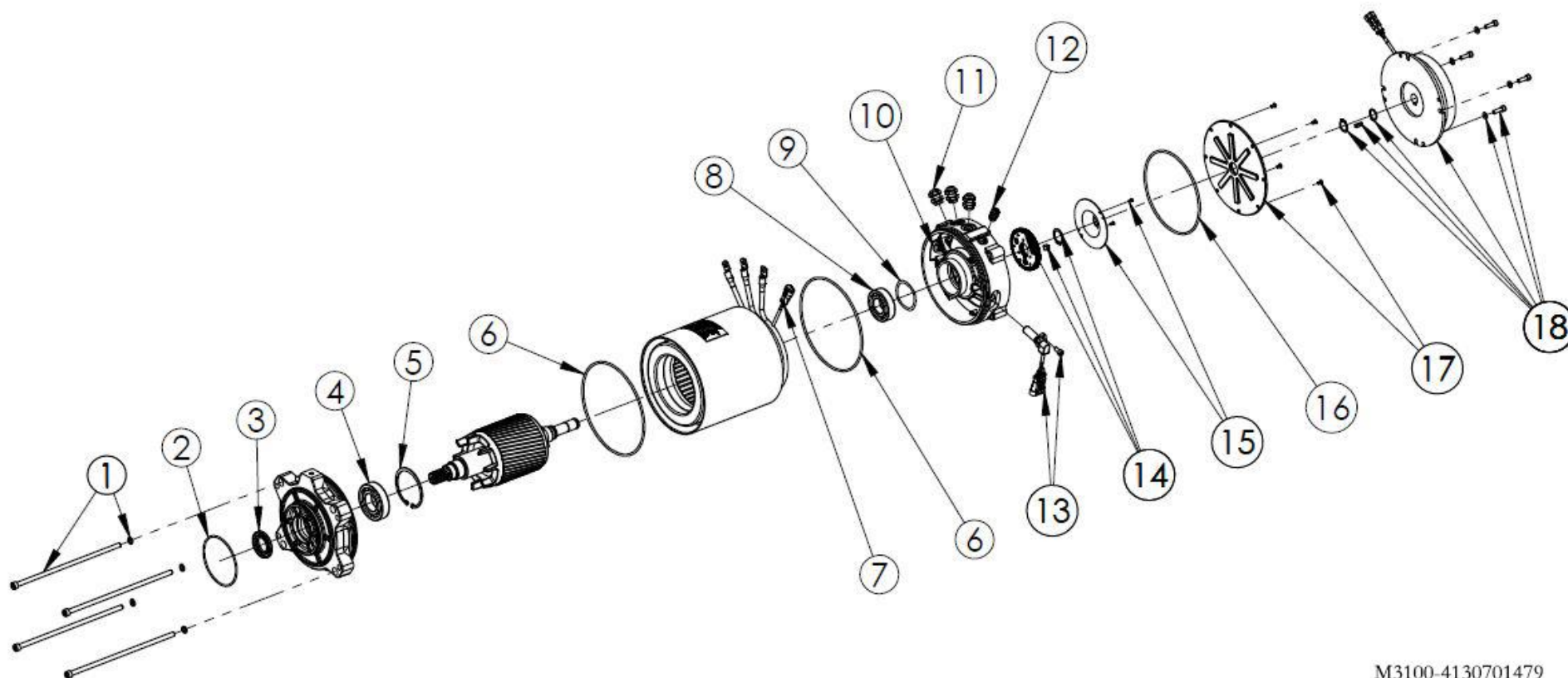
底盘电气 Chassis electric system



M3100-2532001531. S1b

序号 Key	零件代号 Part No.	名称 Description	是否配件 Spare parts Y/N	数量 Qty	备注 Remarks
23	4014010420	螺钉GB70.1-M8*40flZnyc-8.8-480	Screw gb70.1-m8*40flznyc-8.8-480	Y	8
24	25320004291	喇叭固定保护板	Protect plate	Y	1
25	4130000906	单音盆形喇叭（低音）	Single-tone basin type horn (bass)	Y	1
26	25320015942	电位计挡板	Plate	Y	1
27	4130702568	转向电位计WLH22E	Steering potentiometer	Y	1
28	4130701479	交流行走电机ACX-3398_O_REV_B	Ac motor acx-3398_o_rev_b	Y	2
29	25320011402	电位计护罩	Plate	Y	1
30	4011011067	螺栓GB5782-M5*60flZnyc-8.8-480	Bolt gb5782-m5*60flznyc-8.8-480	Y	2

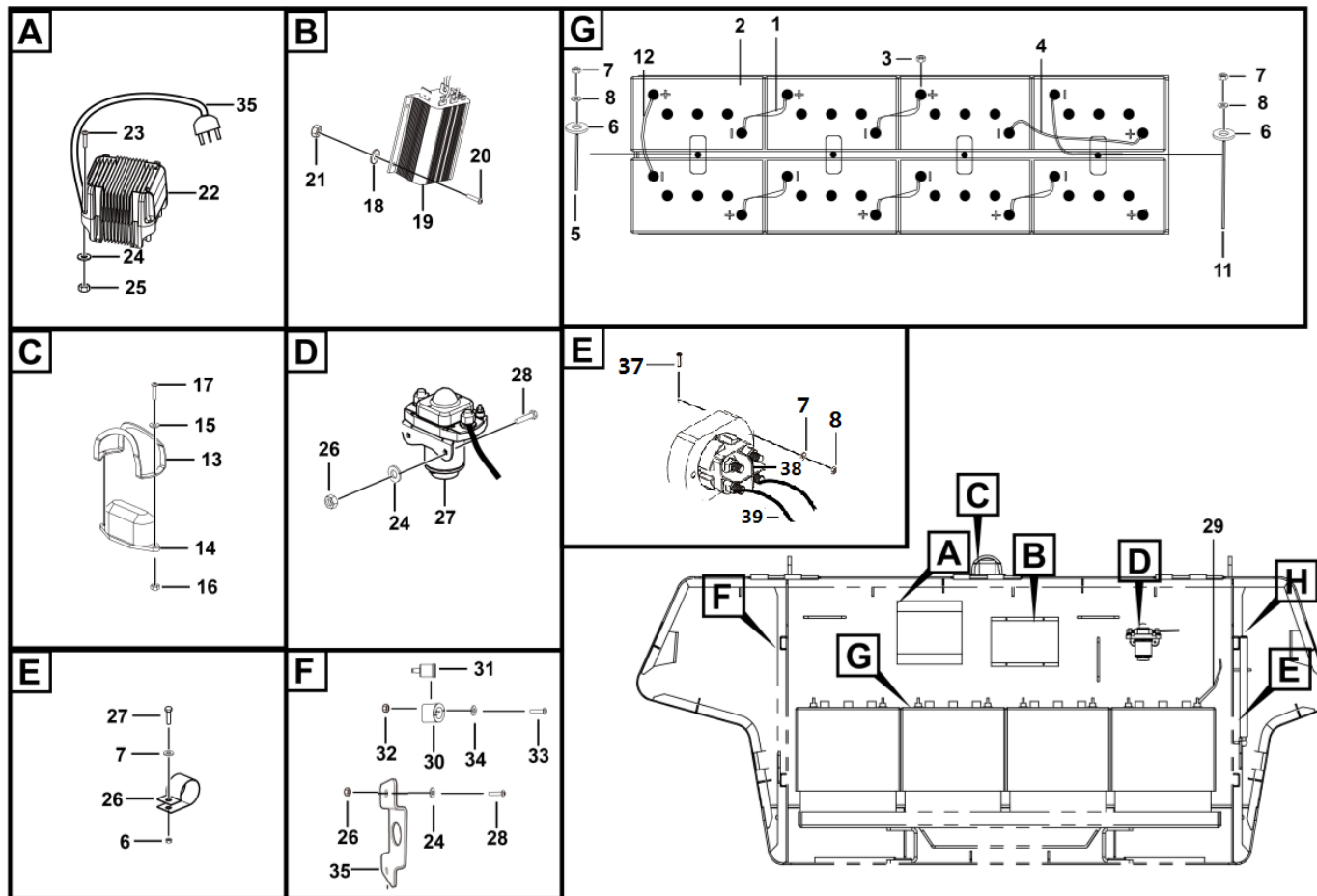
交流行走电机ACX-3398\_O\_REV\_B Ac motor acx-3398\_o\_rev\_b



M3100-4130701479

序号 Key	零件代号 Part No.	名称 Description	是否配件 Spare parts Y/N	数量 Qty	备注 Remarks
1	4130701606001	螺栓维修包8SD.909.050S	Y	1	
2	4130701606002	O型圈8SD.370.537	Y	1	
3	4130701606003	密封圈080068	Y	1	
4	4130701606004	轴承100180	Y	1	
5	4130701606005	固定环060804	Y	1	
6	4130701606006	O型圈8SD.370.488	Y	1	
7	4130701606007	热量传感器H-302S	Y	1	
8	4130701606008	轴承100643	Y	1	
9	4130701606009	垫圈060857	Y	1	
10	4130701606010	孔件8SD.867.820S	Y	1	
11	4130701606011	密封圈5SD.772.046	Y	1	
12	4130701606012	密封圈5SD.772.045	Y	1	
13	4130701606013	速度传感器组件5SD.421.034	Y	1	
14	4130701606014	线圈组件8SD.240.063S	Y	1	
15	4130701606015	线圈组件8SD.325.306S	Y	1	
16	4130701606016	O型圈8SD.370.489	Y	1	
17	4130701606017	覆盖件维修包8SD.180.033S	Y	1	
18	4130701606018	制动器维修包5SD.270.355S	Y	1	

蓄电池侧电气系统 Electricity assembly

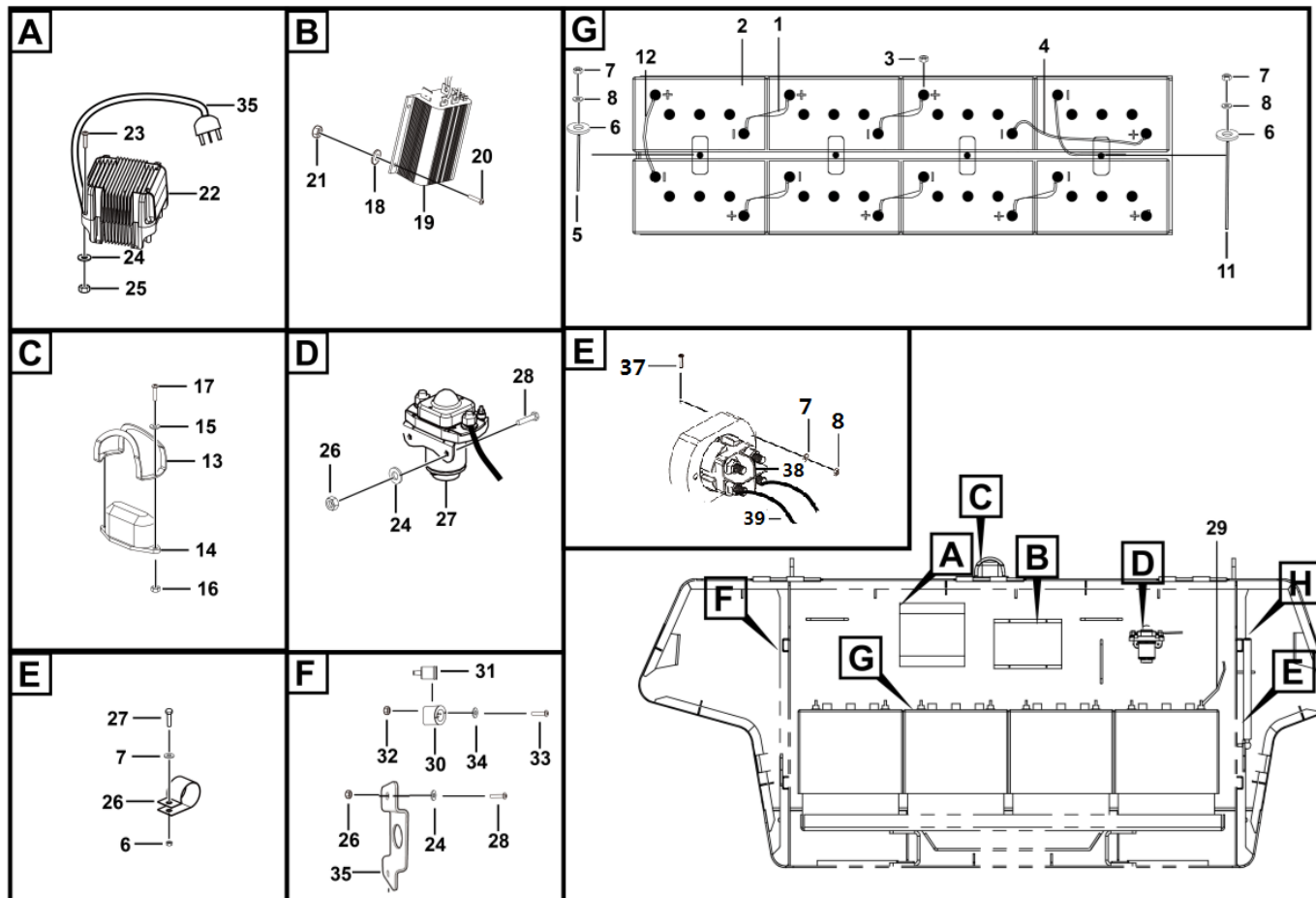


M3100-2532001529.S1b



序号 Key	零件代号 Part No.	名称 Description	是否配件 Spare parts Y/N	数量 Qty	备注 Remarks
1	25320007662	蓄电池串联线P50*260	Wire p50*260	N	5
2	4130001183	电池J305G-AC	Battery	Y	8
3	4013010382	IF1145-2002-六角法兰面螺母5/16-18UNC-2B	Hexagon flange nuts	Y	16
4	25320017931	电源线P50*400	Wire	Y	1
5	25320017951	长螺杆	Screw	Y	1
6	25320017961	压板	Plate	Y	4
7	4013010297	螺母GB889.1-M8flZnyc-8-480	Nutgb889.1-m8flznyc-8-480	Y	6
8	4015010280	垫圈GB97.1-8flZnyc-480	Washergb97.1-10flznyc-480	Y	8
9	4120706617	双联双孔管夹SXTPS-215	Clamp	Y	1
10	4130702621	电源线LZB003D12*8*1000	Wire	Y	1
11	25320017941	短螺杆	Screw	Y	3
12	25320004252	蓄电池串联线P50*175	Battery series line p50*175	Y	1
13	25320000192	护罩	Plate	Y	1
14	4130000729	工作指示灯	Working light	Y	1
15	4015010290	垫圈GB97.1-4flZnyc-480	Washer gb97.1-4flznyc-480	Y	4
16	4013010304	螺母GB6170-M4flZnyc-8-480	Nut gb6170-m4flznyc-8-480	Y	2
17	4014010121	螺钉GB818-M4*20flZnyc-4.8-480	Screw gb818-m4*20flznyc-4.8-480	Y	2
18	4015010283	垫圈GB97.1-5flZnyc-480	Washergb97.1-5flznyc-480	Y	8
19	4130000967	直流转换器HWZ16-48V-24V-420W	Dc to dc	Y	1
20	4014010386	螺钉GB818-M5*20flZnyc-4.8-480	Screw gb818-m5*20flznyc-4.8-480	Y	4
21	4013010305	螺母GB889.1-M5flZnyc-8-480	Nut gb889.1-m5flznyc-8-480	Y	4
22	4130702137	充电器GPSC3548-LG-01	Charger	Y	1

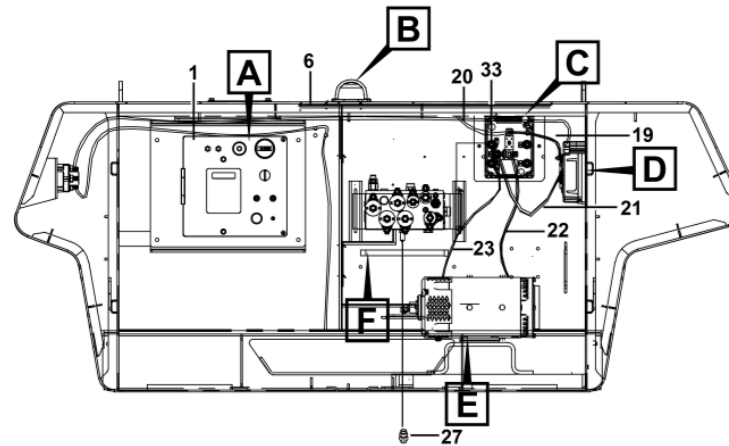
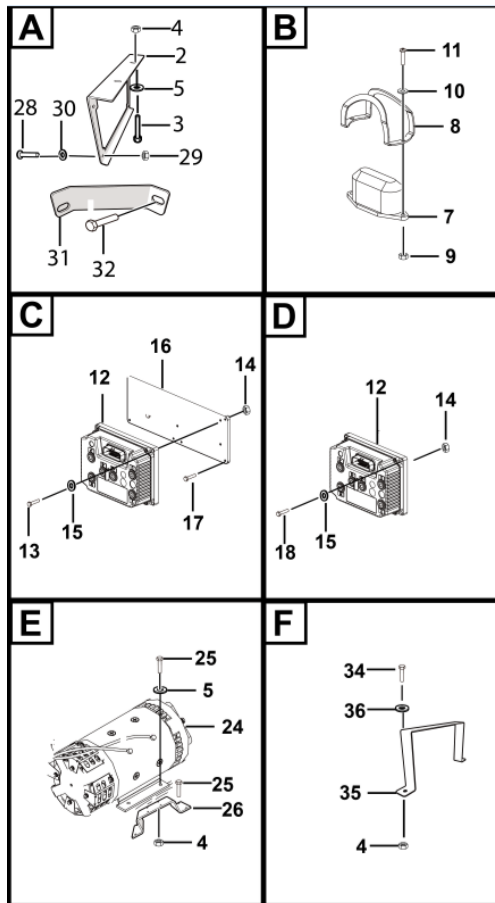
蓄电池侧电气系统 Electricity assembly



M3100-2532001529.S1b

序号 Key	零件代号 Part No.	名称 Description	是否配件 Spare parts Y/N	数量 Qty	备注 Remarks
23	4014010132	螺钉GB70.1-M6*20flZnyc-8.8-480	Screw gb70.1-m6*20flznyc-8.8-480	Y	4
24	4015010284	垫圈GB97.1-6flZnyc-480	Washer	Y	16
25	4013010398	盖形螺母GB923-M6flZnyc-8-480	Nut gb923-m6flznyc-8-480	Y	4
26	4013010300	螺母GB889.1-M6flZnyc-8-480	Nut	Y	4
27	4130701748	直流接触器GSZ2-600S	Dcswitch gsz2-600s	Y	1
28	4011010747	螺栓GB5783-M6*16flZnyc-8.8-480	Bolt gb5783-m6*16flznyc-8.8-480	Y	4
29	25320010722	电源线P50*900	Wire	N	1
30	4130701992	固定式美标插头J501	Plug	Y	1
31	25320012751	橡胶护套	Plug	Y	1
32	4013010387	螺母GB889.1-M3flZnyc-8-480	Nut gb889.1-m3flznyc-8-480	Y	2
33	4014010415	螺钉GB818-M3*12flZnyc-4.8-480	Screm gb818-m3*12flznyc-4.8-480	Y	2
34	4015010370	垫圈GB97.1-3flZnyc-300HV	Washer ? ? ? ? ? gb97.1-3flznyc-300hv	Y	4
35	25320009211	固定板	Plate	Y	1
36	25320014171	充电线束	Charger wire	Y	1
37	4011010994	螺栓GB16674-M8*25flZnyc-8.8-480	Bolt 螺栓gb16674-m8*25flznyc-8.8-480	N	2
38	4130702090	双极总电源隔离开关TR880175-0001	Dual pole master disconnect switch	Y	1
39	25320015301	电源线P50*4000	Wire	Y	1

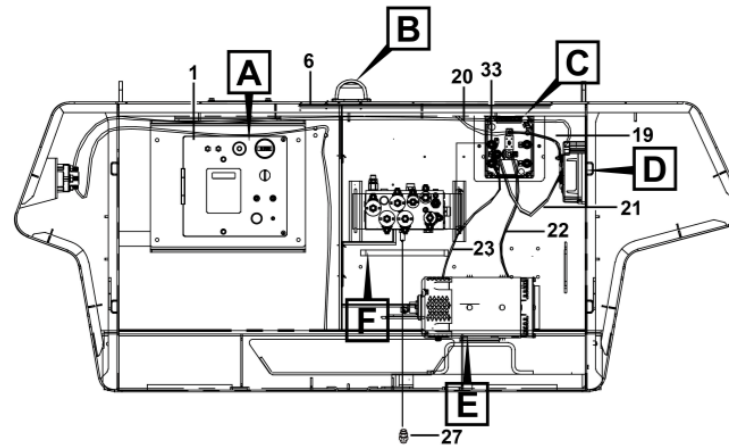
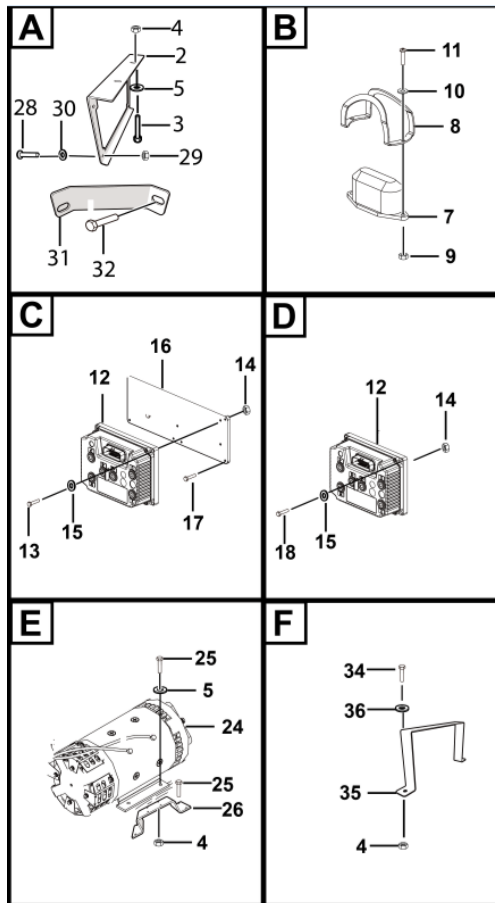
油箱侧电气系统 Electrical assembly



M3100-2532001528.S1b

序号 Key	零件代号 Part No.	名称 Description	是否配件 Spare parts Y/N	数量 Qty	备注 Remarks
1	4130701752	下控箱总成	Ground control box	Y	1
2	25320016621	下控箱固定板焊台	Plate	Y	1
3	4011010743	螺栓GB5783-M8*25flZnyc-8.8-480	Bolt gb5783-m8*25flznyc-8.8-480	Y	2
4	4013010297	螺母GB889.1-M8flZnyc-8-480	Nutgb889.1-m8flznyc-8-480	Y	6
5	4015010289	垫圈GB96.1-8flZnyc-480	Washer gb96.1-8flznyc-480	Y	10
6	25320016363	底盘线束	Wire	Y	1
7	4130000729	工作指示灯	Working light	Y	1
8	25320000192	护罩	Plate	Y	1
9	4013010360	螺母GB889.1-M4flZnyc-8-480	Nut	Y	5
10	4015010290	垫圈GB97.1-4flZnyc-480	Washer gb97.1-4flznyc-480	Y	10
11	4014010121	螺钉GB818-M4*20flZnyc-4.8-480	Screw gb818-m4*20flznyc-4.8-480	Y	2
12	4130702618	电机控制器	Motor controler	Y	2
13	4011010997	螺栓GB5783-M6*40flZnyc-8.8-480	Bolt gb5783-m6*40flznyc-8.8-480	Y	4
14	4013010300	螺母GB889.1-M6flZnyc-8-480	Nut	Y	8
15	4015010284	垫圈GB97.1-6flZnyc-480	Washer	Y	16
16	25320004021	Zapi控制器固定用板	Zapi controller fixing plate	Y	1
17	4011010994	螺栓GB16674-M8*25flZnyc-8.8-480	Bolt 螺栓gb16674-m8*25flznyc-8.8-480	N	2
18	4011010717	螺栓GB5783-M6*30flZnyc-8.8-480	Boltgb5783-m6flznyc-8.8-480	Y	4
19	25320004201	控制器串联线(正)P35*300	Controller series line (positive)p35*300	Y	1
20	25320004191	接触器至控制器P50*3000	Contactor controller p50*3000	Y	1
21	25320004222	控制器串联线(负)P35*500	Controller series line (negative)p35*700	Y	1
22	25320004212	马达电源线P35*800	Motor line p35*800	Y	1

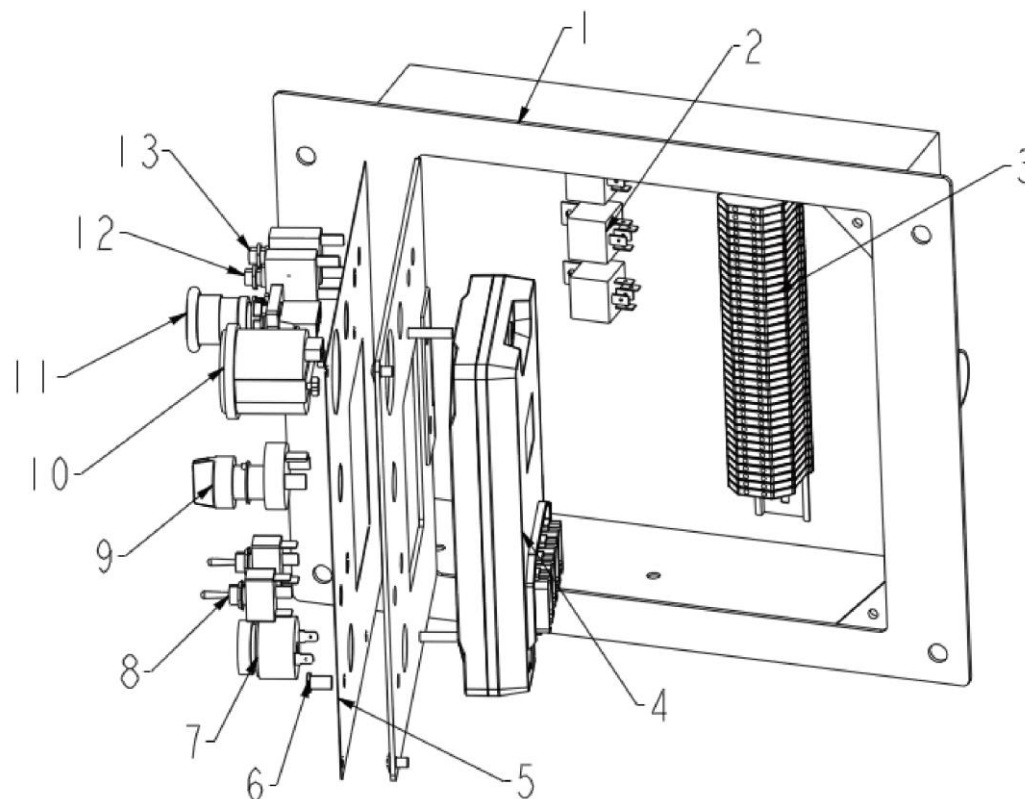
油箱侧电气系统 Electrical assembly



M3100-2532001528.S1b

序号 Key	零件代号 Part No.	名称 Description	是否配件 Spare parts Y/N	数量 Qty	备注 Remarks
23	25320004232	马达负极线P35*800	Y	1	
24	4130001267	举升电机	Y	1	
25	4011011017	螺栓GB16674-M8*30flZnyc-8.8-480	Y	8	
26	25320008702	板	Y	1	
27	4130000852	压力传感器MBS1250-341X-C2BD08	Y	1	
28	4011011015	螺栓GB16674-M10*25flZnyc-8.8-480	Y	3	
29	4013010372	螺母GB889.1-M10flZnyc-8-480	Y	4	
30	4015010279	垫圈GB97.1-10flZnyc-480	Y	4	
31	25320017921	下控箱支撑支架	Y	1	
32	4011010712	螺栓GB16674-M10*30flZnyc-8.8-480	Y	1	
33	4130701702	护帽	Y	8	
34	4011011062	螺栓GB16674-M8*12flZnyc-8.8-480	Y	2	
35	25320009171	板	Y	1	
36	4015010280	垫圈GB97.1-8flZnyc-480	Y	2	

下控箱总成 Ground control box assembly



M3100-4130701752





