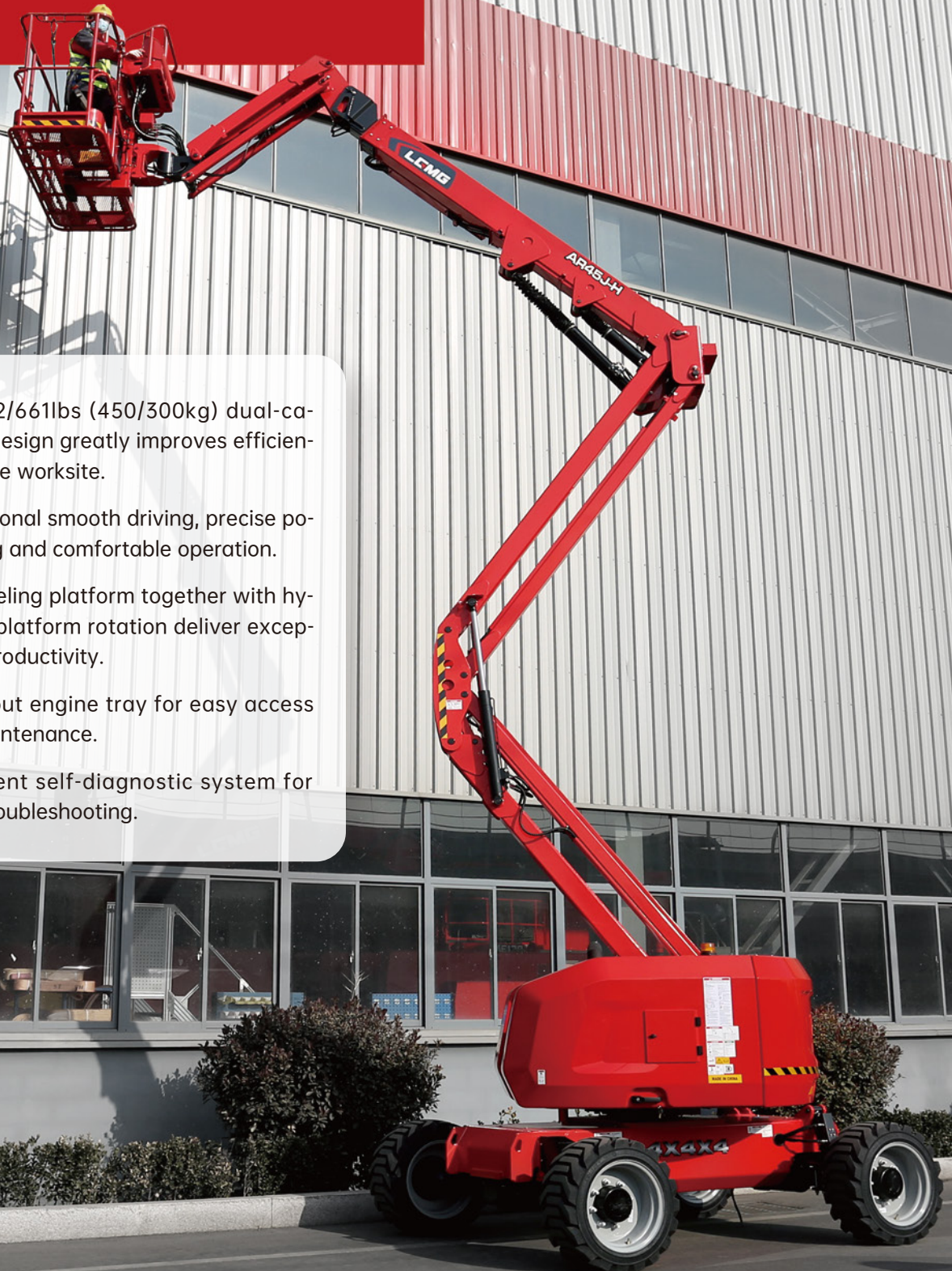


LGMG

AR45J-H

ARTICULATING BOOM LIFT



- The 992/661lbs (450/300kg) dual-capacity design greatly improves efficiency on the worksite.
- Proportional smooth driving, precise positioning and comfortable operation.
- Self-leveling platform together with hydraulic platform rotation deliver exceptional productivity.
- Swing out engine tray for easy access and maintenance.
- Intelligent self-diagnostic system for quick troubleshooting.

LGMG Diesel - Articulating Boom Lift

SPECIFICATIONS

MODELS	AR45J-H (AR14J-H)	
	Imperial	Metric
Measurements		
Work Height Max.	52'2"	15.9m
Platform Height Max.	45'7"	13.9m
Horizontal Outreach	25'3"	7.7m
Up and Over Height	24'3"	7.4m
Platform Length	6'	1.83m
Platform Width	2'6"	0.76m
A Stowed Length	22'10"	6.95m
Length-Transport (jib tucked)	19'4"	5.9m
B Overall Width	7'7"	2.3m
C Stowed Height	7'4"	2.24m
Height-Transport	8'8"	2.65m
D Wheelbase	7'5"	2.25m
E Ground Clearance	1'2"	0.35m

PRODUCTIVITY

Max. Platform Occupancy	2 (unrestricted) / 3 (restricted)	
Platform Capacity (unrestricted)	661 lbs	300kg
Platform Capacity (restricted)	992 lbs	450kg
Turntable Rotation	355°	355°
Drive Speed-Stowed	3.1mph	5km/h
Drive Speed-Raised	0.5mph	0.8km/h
Gradeability	45%	45%
Max. Wind Speed	28mph	12.5m/s
Turning Radius-Inside	5'6"	1.67m
Turning Radius-Outside	12'	3.66m
Max.Slope	5°/5°	5°/5°
Tire Type	RT Foam-filled	
Tire Size	315/55D20	315/55D20

POWER

Power Source	Kubota V2403 / Kubota D1105	
--------------	-----------------------------	--

HYDRAULIC SYSTEM

Hydraulic Oil Volume	19.8gal	75L
----------------------	---------	-----

WEIGHT

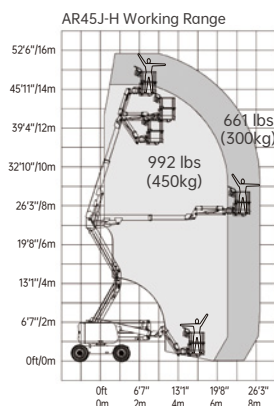
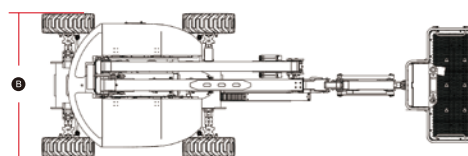
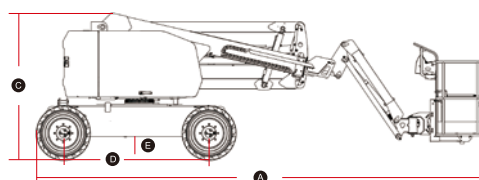
Machine Weight (CE/ANSI)	16314 lbs	7400kg
--------------------------	-----------	--------

STANDARD FEATURES

Proportional control	Emergency stop device
Horn/Hour meter	Auto-leveling platform
Full-height drive	Anti-collision protection
Flashing beacons	Over tilt protection system
Cylinder bellows	Platform control cover
Platform tool box	Overload sensing system
Oscillating axle	Intelligent diagnostic system
RT Foam-filled tires	Telematics connector

OPTIONAL

AC power to platform	Auxiliary rail
Telematics	Solid non-marking tires
Solid tires	Half-height mesh platform
Cold weather package	Biodegradable hydraulic oil
Foam-filled non-marking tires	



Please contact LGMG or a local dealer for more details.

LGMG reserves the right to change technical data without prior notice. All photos and pictures in this brochure are for promotional purposes only. This brochure comes into effect in May, 2023.

LINGONG HEAVY MACHINERY CO., LTD.

Address: No. 2676, Kejia Road, Jinan, Shandong, China
 Email: sales@lmgm.com.cn Tel: +86 531 6787 9283

LGMG Europe B.V.

Address: Donker Duyvisweg 301, 3316 BL Dordrecht, The Netherlands
 Email: sales@lmgmeurope.com Tel: +31 850 642 777

LGMG North America Inc.

Address: 4105 Live Oak Drive, Suite 100, The Colony, Texas 75056 United States
 Email: sales@lmgmna.com Tel: +1 833 288 5464

www.lmgmlifts.com



LGMG
 RELIABILITY IN ACTION