

LGMG

T65J-H

TELESCOPIC BOOM LIFT

LGMG has a complete line of engine-driven, high-capacity telescopic boom aerial work platforms, with the maximum working height ranging from 71' 6" to 97' 9" (21.8/29.8m). With a double capacity design of 992/661lbs (450/300kg), the machine can allow up to 3 people to work at the same time both indoors and outdoors, which greatly improves work efficiency.



LGMG Diesel Telescopic Boom Lift

SPECIFICATIONS

| MODELS | T65J-H (T20J-H) | |
|-------------------------------|-------------------|--------|
| Measurements | Imperial | Metric |
| Work Height Max. | 71'6" | 21.8m |
| Platform Height Max. | 65' | 19.8m |
| Horizontal Outreach Max. | 54'6" | 16.6m |
| Platform Length | 8' | 2.44m |
| Platform Width | 2'11" | 0.9m |
| A Stowed Length | 33'6" | 10.2m |
| Length-Transport (jib tucked) | 27'3" | 8.3m |
| B Overall Width | 8'2" | 2.49m |
| C Stowed Height | 9'1" | 2.78m |
| Height-Transport | 9'6" | 2.89m |
| D Wheelbase | 8'3" | 2.51m |
| E Ground Clearance | 1'4" | 0.4m |

| PRODUCTIVITY | |
|----------------------------------|-----------------------------------|
| Max. Platform Occupants | 2 (unrestricted) / 3 (restricted) |
| Platform Capacity (unrestricted) | 661 lbs 300kg |
| Platform Capacity (restricted) | 992 lbs 450kg |
| Turntable Rotation | 360°Continuous |
| Drive Speed-Stowed | 3mph 4.8km/h |
| Drive Speed-Raised | 0.5mph 0.8km/h |
| Gradeability | 45% 45% |
| Max. Wind Speed | 28mph 12.5m/s |
| Turning Radius-Inside | 8'2" 2.5m |
| Turning Radius-Outside | 18' 5.5m |
| Max.Slope | 5°/5° 5°/5° |
| Tire Type | RT Foam-filled |
| Tire Size | 355/55D625 355/55D625 |

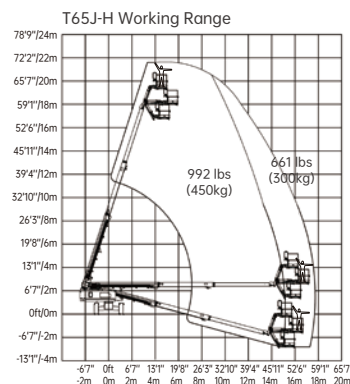
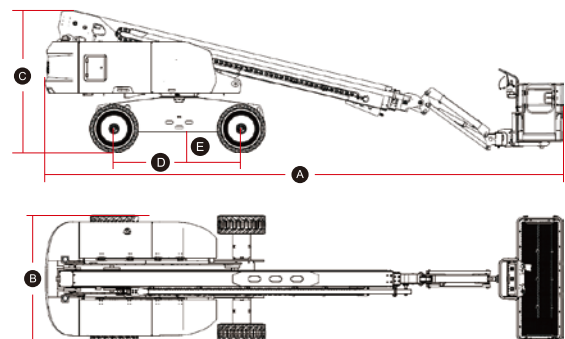
| POWER | |
|--------------------|-----------------------------|
| Power | Deutz D2.9L4 / Kubota V2403 |
| Fuel Tank Capacity | 26.4gal 100L |

| HYDRAULIC SYSTEM | |
|----------------------|--------------|
| Hydraulic Oil Volume | 47.5gal 180L |

| WEIGHT | |
|--------------------------|-------------------|
| Machine Weight (CE/ANSI) | 26455 lbs 12000kg |

| STANDARD FEATURES | |
|----------------------|------------------------------------|
| Proportional control | Emergency stop button |
| Horn/Hour meter | Auto-leveling platform |
| Flashing beacons | Anti-collision protection |
| Cylinder bellows | Over-tilt protection system |
| Platform tool box | Platform control cover |
| Oscillating axle | Overload sensing system |
| Telematics connector | Intelligent diagnostic system |
| RT Foam-filled tires | Descent alarm with flashing beacon |

| OPTIONAL | |
|------------------------|-------------------------------|
| Telematics | Foam-filled non-marking tires |
| AC power to platform | Half-height mesh platform |
| Hydraulic oil radiator | Hydraulic generator kit |
| Cold weather package | 7.5kw Hydraulic generator |
| Glazier kit | Biodegradable hydraulic oil |
| Auxiliary rail | |



Please contact LGMG or a local dealer for more details.
 LGMG reserves the right to change technical data without prior notice. All photos and pictures in this brochure are for promotional purposes only.
 This brochure comes into effect in May, 2023.

LINGONG HEAVY MACHINERY CO., LTD.

Address: No. 2676, Kejia Road, Jinan, Shandong, China
 Email: sales@lmgm.com.cn Tel: +86 531 6787 9283

LGMG Europe B.V.

Address: Donker Duyvisweg 301, 3316 BL Dordrecht, The Netherlands
 Email: sales@lmgmeurope.com Tel: +31 850 642 777

LGMG North America Inc.

Address: 4105 Live Oak Drive, Suite 100, The Colony, Texas 75056 United States
 Email: sales@lmgmna.com Tel: +1 833 288 5464

www.lmgmlifts.com

